

Maple Ridge This Month

OCTOBER 2014

ENGAGED: 2014 Local Election

Election Day is Saturday, November 15, 2014. Who are you voting for?

Across BC citizens will be electing their Mayors, Council and School Trustees on Saturday, November 15, 2014. This year, the successful candidates will be serving a four year term for the first time.

Candidates have until Friday, October 10, 2014 to file nomination papers, and then they have one week to decide if they want to keep their name on the ballot. On Friday, October 17, 2014 at 4:00 pm the nomination process will be closed and the ballot will be set for Maple Ridge's 2014 Local Election. That's where you need to get involved. You will decide who you want to represent you as Mayor, on Council and as your School Trustees.

As the first ad in our 2014 voting campaign notes, the 2011 Maple Ridge election voter turnout was just over 25%, with 12,809 citizens casting a vote. Typically, there's a 50 to 60% turnout in Federal and Provincial elections. So clearly, we need to step it up when it comes to participation in the Local Election. Local government is responsible for police, fire protection, local roads, water, sewer, storm water management, parks and a host of other services that impact your daily life.

Over the next six weeks we will share information, pose questions and keep you informed of the key dates and information regarding "Maple Ridge Election 2014." In addition to the print ads and the regular updates in Maple Ridge This Month, we encourage you to check out the 2014 Local election page that you can access at mapleridge.ca. This is a great place to start your search for information. We will be posting candidate profiles and contact information as the nomination papers are filed. In addition, the locations and times for the advance and November 15 polling days are already online for you.

2011 Lower Mainland Local Election Turnouts

Abbotsford 39%
Vancouver 34%
Mission 30%
Pitt Meadows 30%
Port Moody 27%
Langley Township 26%
Surrey 25%
West Vancouver 25%
Maple Ridge 25%
New Westminster 24%
Burnaby 23%
Coquitlam 22%
North Vancouver City 22%
Coquitlam 22%
North Vancouver District 21%
Langley City 20%
Port Coquitlam 19%
Chilliwack 18%

Let's step it up Maple Ridge.

Get engaged. Be a voter.
It all starts at mapleridge.ca

**MAPLE RIDGE
ELECTION 2014**
Mark your calendar. **Saturday, November 15, 2014**

We will also be posting on social media on the City of Maple Ridge Facebook and Twitter pages. We will be using the hashtag #MRElection2014 for our messaging. We need you to get involved in the conversation. You need to read the local papers, go to the all candidates meetings and be proactive in seeking information on the men and women who have stepped forward to stand for office. This election is important. All around the world people wish they had the right to vote. 25% of you understand that already, we are asking the other 75% to 'step it up!' Be engaged. Be a voter.

INFORMED: October 2014

Council Meeting Schedule

Mayor and Council encourage everyone to attend these important public meetings. It's your chance to see how public policy is debated and enacted.

Monday, October 6

9:00 am, Workshop - Blaney Room

1:00 pm, Committee of the Whole - Council Chambers

Tuesday, October 14

6:00 pm, Council Meeting - Council Chambers

Monday, October 20

9:00 am, Workshop - Blaney Room

1:00 pm, Committee of the Whole - Council Chambers

Tuesday, October 21

6:00 pm, Public Hearing - Council Chambers

Tuesday, October 28

6:00 pm, Council Meeting - Council Chambers

Agendas & Minutes

Agendas for these meetings are posted online the Friday before the meeting date. Go to mapleridge.ca, click the link under Your Council on the home page.

Council This Week

Subscribe to the 'Council This Week' eNewsletter that provides a summary of issues discussed at Council Workshop meetings. Go to mapleridge.ca, click the link to 'Notify Me' and sign up today.

Council Meeting Videos

If you are unable to attend a Council Meeting, Public Hearing or Committee of the Whole meeting you can now watch these meetings on your computer 24/7. The entire unedited meetings are posted two to three days after the meeting. The video is indexed to the agenda package so that you can watch them in their entirety or click through by agenda item. Go to mapleridge.ca and click on the video link at the centre of the home page.

SPOTLIGHT ON: A Taste of Maple Ridge and Beyond



On Friday, October 17 the Maple Ridge Agricultural Advisory Committee, in partnership with Maple Ridge/Pitt Meadows Agricultural Association and the Haney Farmers Market present the sixth annual Golden Harvest at the ACT (Arts Centre Theatre). This local food event was created to showcase the talents of top local chefs, culinary arts students from three local high schools (MRSS, Thomas Haney, Garibaldi) and increase awareness of the variety of our local bounty. An appetizer party with a 'harvest-y' feel, Golden Harvest promises to inspire your taste buds and get you thinking and talking local with your friends!

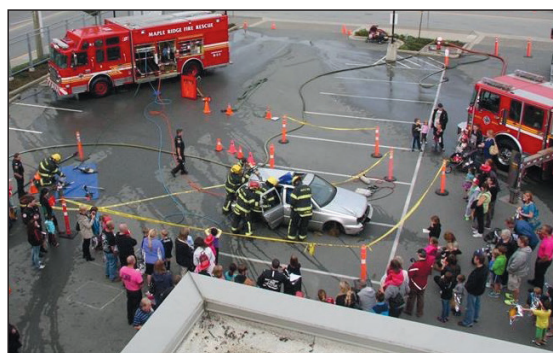
The event runs from 6:00 to 8:00 pm and will feature displays and delicious bite-size samples from a number of amazing local farms and restaurants. Tickets are \$30 with seniors and students tickets prices at only \$20. Get your tickets at the Haney Farmers Market, from any member of the Agricultural Advisory Committee or from the ACT box office in person or by calling 604-476-2787.

INVOLVED: Fire Department Open House

The Whole Family is invited to Fire Hall No. 1 on Saturday, October 4

Bring the family to Fire Hall No. 1 on Saturday, October 4, 2014 for the annual Fire Department Open House. You will want to bring your camera as the kids will have a chance to sit in the trucks, learn about some of the special apparatus that firefighters use to save lives and some great tips on fire safety for the moms and dads. There's even an obstacle course for the young ones to practice some of the skills that firefighters use every day on the job.

Fire Hall No. 1 is located at 22708 Brown Avenue, just one block north of Dewdney Trunk Road. The Open House runs from 11:00 am until 3:00 pm and remember this is all FREE for the whole family.



INFORMED: Thanksgiving Hours

Monday, October 13 Holiday Hours

Municipal Hall: Closed

Maple Ridge Leisure Centre: Open from 8:30 am to 4:00 pm

Pitt Meadows Family Recreation Centre: Closed

Greg Moore Youth Centre: Open 6:00 pm to 9:30 pm

Firehall No. 1 Administrative Office: Closed

RCMP - Police Services Administrative Office:

Open 11:00 am to 3:00 pm

Pitt Meadows Youth Centre: Closed

Contact us at enquiries@mapleridge.ca

If you have a question about any of the content in this ad, or questions about any programs or services offered by the District of Maple Ridge, please send an email to enquiries@mapleridge.ca and one of our team members will respond to you.



11995 Haney Place, Maple Ridge BC V2X 6A9

mapleridge.ca

@yourmapleridge

@yourmapleridge

