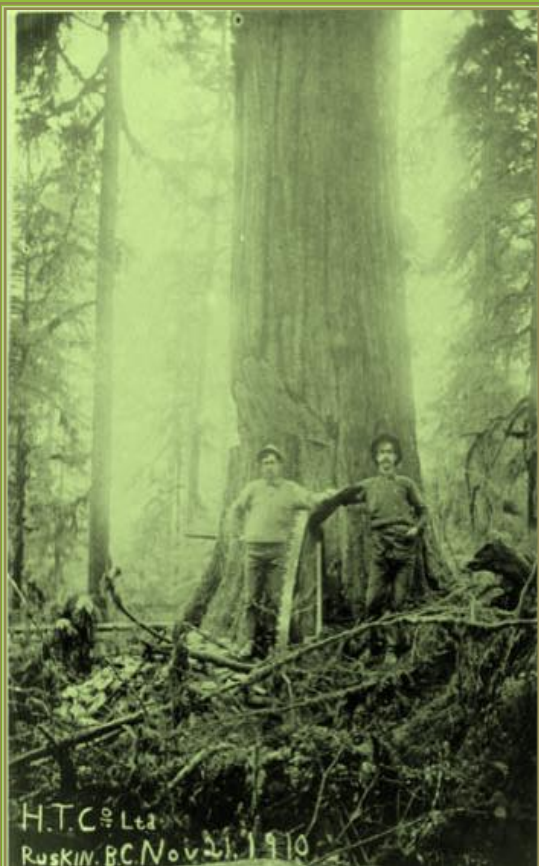


Autumn 2011

Heritage Here

Maple Ridge Community
Heritage Commission Newsletter



IN THIS ISSUE

- The Commission1
- Heritage Context Study2
- On Going Projects2
- Future Events2
- 2011 Heritage Awards ...3
- New Commission Members ...5
- Heritage Resources ...7



Michael Cook – Member At Large

Faye Isaac – Historical Society

Jeremy Laity – Youth

Michael Morden – Council Liaison

Jacqueline Mulcahy – Acting Chair

Brenda Smith – Historical Society

Lisa Zosiak – Staff Liaison

Newsletter Subcommittee

Jacqueline Mulcahy

Lisa Zosiak

Photo Credits

Helmi Braches

Michael Eng

Maple Ridge Museum and Archives

Craig Speirs

Erika Williams

Published Quarterly By
Maple Ridge Community Heritage Commission
11995 Haney Place,
Maple Ridge, B.C. Canada V2X 6A9

Tel 604-467- 7341

Fax: 604-467-7329

<http://www.mapleridge.ca>

Mandate of the Heritage Commission

The Community Heritage Commission (CHC) advises Municipal Council on matters relating to heritage conservation.

Heritage Funding

Financial support provided by the municipality as well as provincial and federal programs.

Community Awareness

Heritage Plaques, Heritage Awards, Green Design, Partnerships with individuals and community groups interested in public heritage.

Community Heritage Context Planning

Identify and explain our community's sense of heritage. Define factors and processes that influence our understanding of heritage.

Strategic Heritage Planning Program

Support and prepare 5 to 10 year heritage planning strategy within the context of heritage study.

Heritage Implementation Plan

Support and prepare detailed plans to indicate how heritage programs may be implemented.

Community Heritage Register Program

Guided by BC Register of Historic Places, and Standards and Guidelines for the Conservation of Historic Places in Canada identify and record physical sites.

Heritage Context Study Update

The Maple Ridge Community Heritage Commission is currently reviewing the 4th draft of this comprehensive document.

Begun in 2009, the study aims to identify historically significant sites and to clarify the values that guide residents in their determinations.

Two public workshops have been held and it was at these meetings, participants were provided opportunity to describe sites significant to them and to identify the values used to make such decisions.

Our consultants have outreached with a variety of community groups to gain a broader understanding of held heritage values. At the same time, they continue to research using available archival resources.

Following the guidelines established by Heritage BC, the Context Study will form the basis of Maple Ridge's Community Heritage Strategy, which in turn can be used in guiding planning decisions conjunction with the Official Community Plan.

It is expected that a public open house for viewing and comments will be scheduled for early 2012.



Completed Project

History Club

Commission members, Brenda Smith developed this program. Its aim is to encourage school children to research, design, and submit a history project at the annual BC Heritage Fair.

Ongoing Projects

Heritage Registry

Some activity has taken place to identify heritage resources that should be evaluated to determine whether they should be included when we expand our heritage inventory and also potentially on the heritage register.

Heritage Plaque Program

We were recently made aware that the condition of some plaques was suffering due to design flaws. We hope to address this issue very soon.

Facebook Page

Jeremy Laity heads this subcommittee. The aim here is to encourage residents to become aware and involved in community heritage.

Future Events

Cemetery Tour

Community Member At Large, Michael Cook is investigating how other communities undertake this opportunity to share the historical landscape. It is our hope that this project will be delivered in 2012.

North Vancouver/Abbotsford Museum Field Trip

The Commission is planning a field trip for 2012 to explore how these museums address heritage needs in these communities.

Maple Ridge Heritage Awards

February 17, 2011

Since 1992, Maple Ridge Community Heritage Awards have help build public understanding of the value of our built heritage while promoting interest in our cultural history. Applicants are nominated by interested parties in the community for the different categories and reviewed by Commission Board Members.



Held annually at Saint Andrew's Heritage Church Hall, this year's Master of Ceremony, Lynne Probyn, Chair of the Maple Ridge Community Heritage Commission welcomed Mayor Ernie Daykin, Councilor Craig Speirs, nominees, family and friends. Mayor Daykin presented five house awards and one building designation award. Sharing stories of his youth in Maple Ridge, the Mayor emphasized the importance of heritage in the community.

Heritage Landscape Award Winner

Bruce Walther & Ann Wilson

Val Patenaude

Maple Ridge Engineering Department

Artists, Bruce & Ann created four sidewalk mosaic tile's installed on 224th Street and Lougheed between 224th and 223rd. This installation is part of the beautification of downtown Maple Ridge.

Maple Ridge Engineering Dept. and Val Patenaude from the Maple Ridge Museum supported this visual installation.

Sheila Nickols Award Winner

Community History & Heritage Teaching

Maple Ridge Library

For support of programs and presentations such as the Maple Ridge Family History Group, and the Youth History Club.

Significant Contribution to the Preservation of Historical Documents Award Winner

Mount Crescent Elementary School - Parents Advisory Council and Staff

For organization and donation of Mount Crescent Elementary Fonds. Archival material was donated to the Maple Ridge Museum and a Time Capsule was filled and sealed until September of 2030.

Posthumous Award

Family of Mr. Don Merkley

A long time resident of our community who passed away at the age of 90 on September 30, 2010. Mr. Blake Merkley received the award.

Maple Ridge Heritage Awards February 17, 2011



Lava Lights Band members, Cathy Barrington, James Thorhaug, Kathryn Baird, Kerry Paulucelli and Kirk Watson entertained guests with R&B and Jazz selections while Cindy Lee of Café Beans provided a delectable assortment of refreshments. Community-minded Maple Ridge Florist loaned the Commission two white rose standards and made up a bouquet of white roses for the raffle at the end of the evening.



New Commission Members

Youth Representative

Jeremy Laity joined the Heritage Commission as a Youth Representative in the Fall of 2010.



He is in grade 9 and has always enjoyed learning about history. His roots in Maple Ridge go back to the 1870s when his great-great-grandfather, John Henry Laity, established a farm here. He and his family still live on a portion of that farm, which now operates primarily as a dairy farm. He enjoys researching his family history and piecing together the stories of their lives. Besides history, Jeremy enjoys fencing, dairy calf 4-H, canoeing, biking, geocaching, and working on the farm.

He was introduced to the Community Heritage Commission at the Earth Day celebration and, because of his interest in local history, decided to join. In his term on the CHC, Jeremy hopes to be an asset to the group and help educate the community as to Maple Ridge's rich history. His favourite local heritage buildings are St. John the Divine Anglican Church, Hill House, the Algernon Laity house and barn, the Wilburn Hampton house and trees, and the Ernest Daykin house.

Maple Ridge Historical Society Representative

Faye Isaac retired from Safeway after 36 years of service, but as a long time resident of Maple Ridge, continues to serve our community. She is the current president of the Maple Ridge Historical Society and was appointed to the Commission in January 2011.

Married with one son, Faye was elected as School Trustee for 3 terms, and Municipal Councillor for 2 terms. She has been a member of the GVRD Parks Board, GVRD Labour Board, Social Planning, and Arts Council. She has also held the position of President for the Lower Mainland Municipalities Association.



New Commission Members

Council Liaison

Mike Morden has lived in Maple Ridge since 1988. He and his wife Kim, a local piano teacher and full time university student, have been married since 1980 and have two grown children.

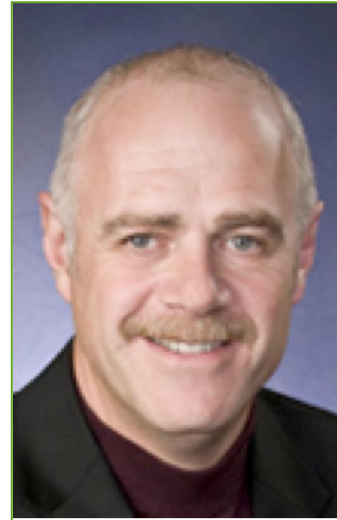
Mike has worked in the security industry since 1980 and he and his wife have owned and operated security companies in Maple Ridge since 1990.

Mike taught for 10 years part-time in the security trade at BCIT and the Justice Institute of BC. He holds tickets for electrical and alarm systems, sits on a PAC at BCIT, is a member of a provincial government advisory board, and is a Past Director of the Alarm Association of BC.

Mike has a long history of community involvement including a member of the Haney Rotary Club since 1990, serving as President, five terms as Secretary, and is currently an ongoing active member. He has been a Chamber of Commerce member for 15 years and is a past member of the Maple Ridge Crime Prevention Committee.

Mike was elected to Municipal Council in 2008. He serves on the Parks & Leisure Services Commission, Community Heritage Commission, BIA Security Committee, Parcel Tax Review Panel, and Audit Committee. He is a past liaison for the Maple Ridge Pitt Meadows Chamber of Commerce, Economic Advisory Committee, Ridge Meadows Recycling Society, and the Ridge Meadows Seniors Society.

"I am a good community member that believes in our future. I, like most of you, want to live in a city that is a balanced mix of residential, business, recreational and green space. I don't think we have to sacrifice one to get the other. I believe we can have it all. My promise to you is that I always will make sensible balanced decisions always for the benefit of the majority of our citizens."



Why Heritage Resources?

Are you curious about the role of heritage commissions in British Columbia and Canada?
Do you wonder what standards are applied to heritage sites?

Begin by Exploring Local Heritage Resources

Maple Ridge Community Heritage Commission:

<http://www.mapleridge.ca/EN/main/municipal/728/chc.html>

Maple Ridge Museum and Archives:

<http://www.mapleridgemuseum.org>

Maple Ridge Historical Society

http://www.mapleridgemuseum.org/05_historical_society.html

Go Beyond the Local

BC Heritage Branch

<http://www.jti.gov.bc.ca/heritage/>

The Land Conservancy

<http://blog.conservancy.bc.ca/>

Heritage Legacy Fund

<http://www.heritagelegacyfund.ca/>

BC Historical Foundation

<http://www.bchistory.ca/>

Heritage Planning: Why the Local Matters

BC Ministry of Community, Sport, and Cultural Development

http://www.cscd.gov.bc.ca/lgd/planning/community_planning.htm

Canadian Tourism Commission

<http://en-corporate.canada.travel/>

Become an Expert

Vancouver Heritage Foundation Old School

<http://www.vancouverheritagefoundation.org/oldschool.html>

University of Victoria Cultural Resources Management Program

<http://www.uvcs.uvic.ca/cultural/>