

CIVIC & CULTURAL FACILITY

INCLUDING A MUSEUM, ARCHIVES & POST-SECONDARY
EDUCATION SPACE

Visit mapleridge.ca/1676 for more information.

Email us at facilitytalk@mapleridge.ca with your questions.

OVERVIEW

- New building completes civic precinct on corner of 224th Street and Haney Place.
- New Civic Facilities would include Assembly Rooms, Museum, Education campus, Cafe and Commercial spaces.
- New public Plaza created between existing Leisure Centre and new Civic building.
- New public washrooms along south edge of Plaza for community events and festivals
- Additional parking in parkade expansion below new civic building with access ramp on south edge for museum deliveries and loading.
- Upgrades to Leisure Centre leisure pool, mechanical rooms and new chemical storage room building.
- New Youth Wellness Centre to provide much-needed additional health services to Maple Ridge youth.
- Potential for additional development above new civic building, along 224th Street, that could be used for offices, hotel or seniors housing.



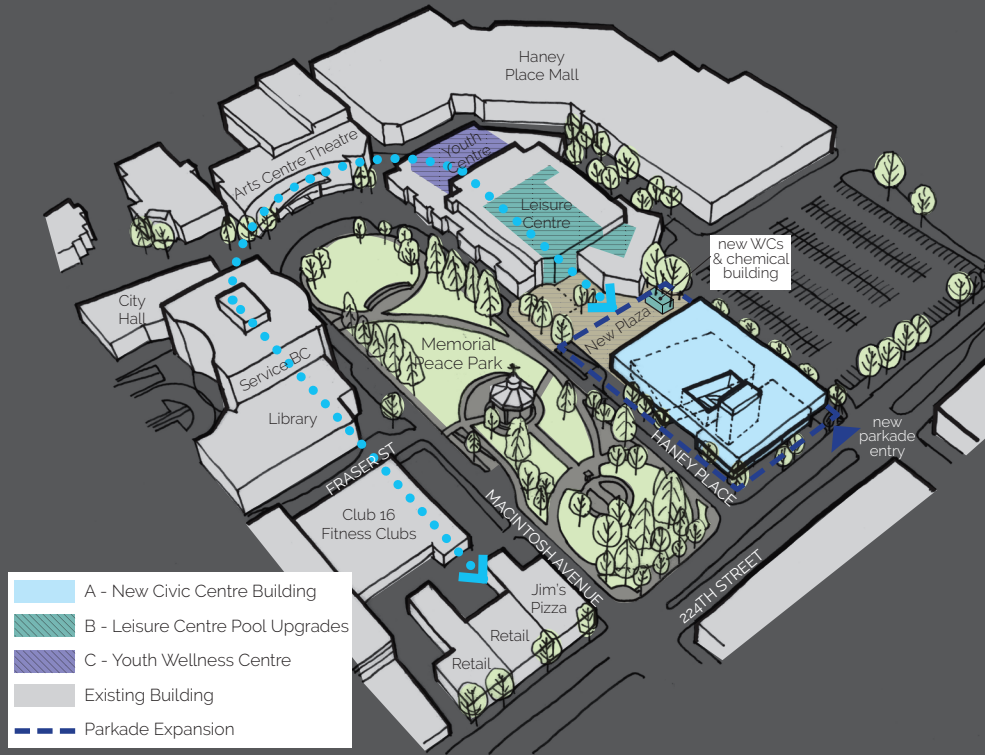
**HAVE OPINIONS?
JOIN THE CONVERSATION.**

Use or download a QR Code app on your
mobile device and scan this square.



5

CIVIC & CULTURAL FACILITY SITE DIAGRAM

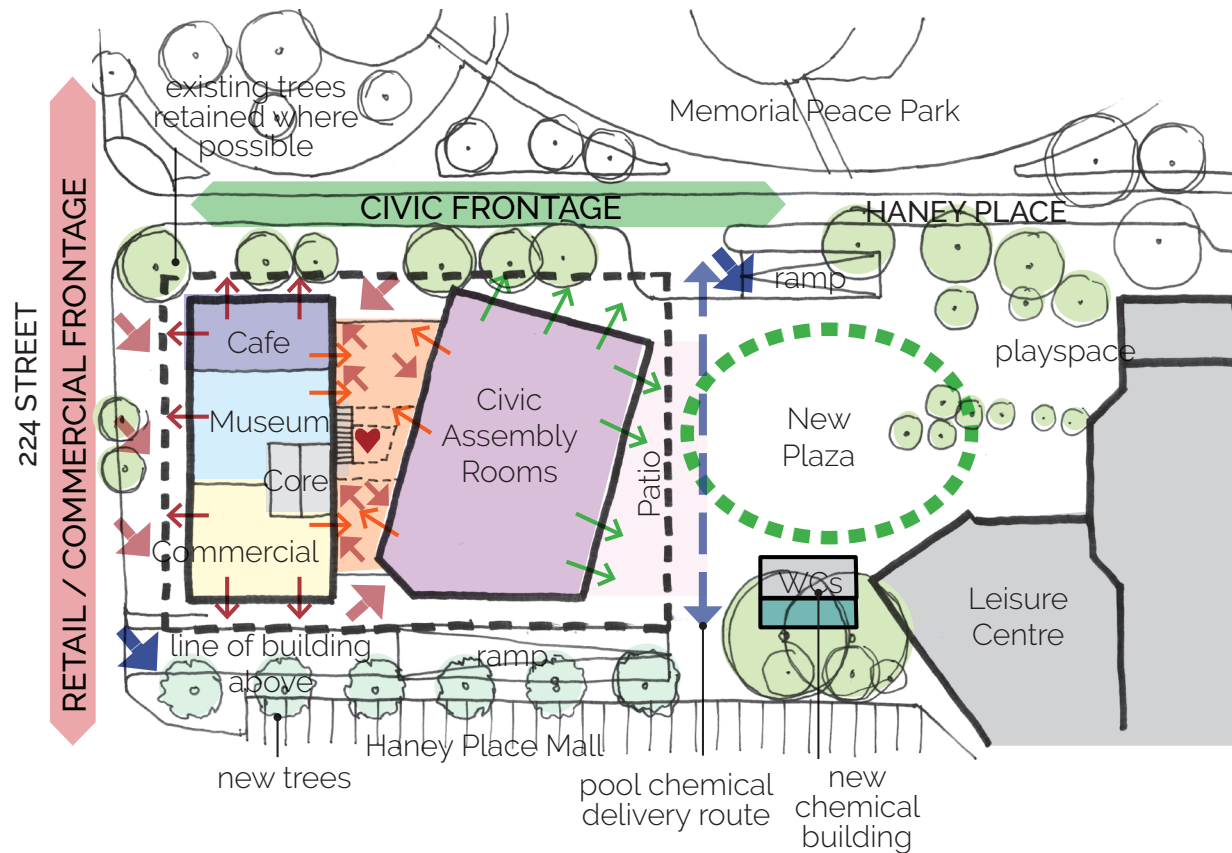


PRECEDENTS

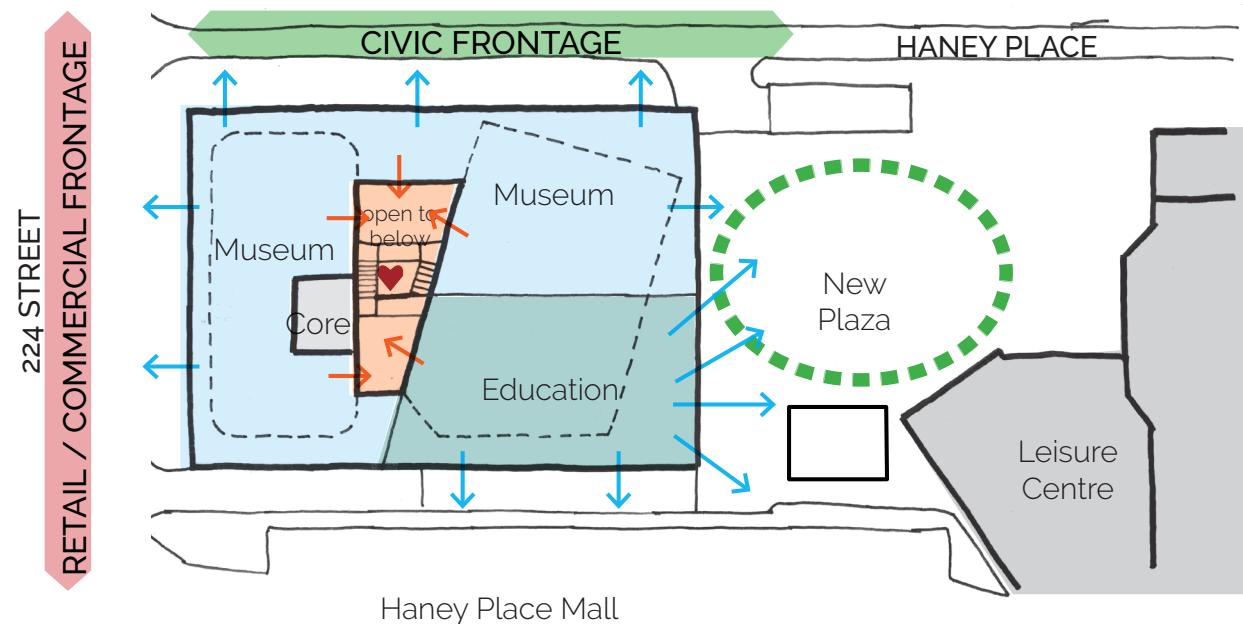


CIVIC & CULTURAL FACILITY SITE PLAN

LEVEL 1

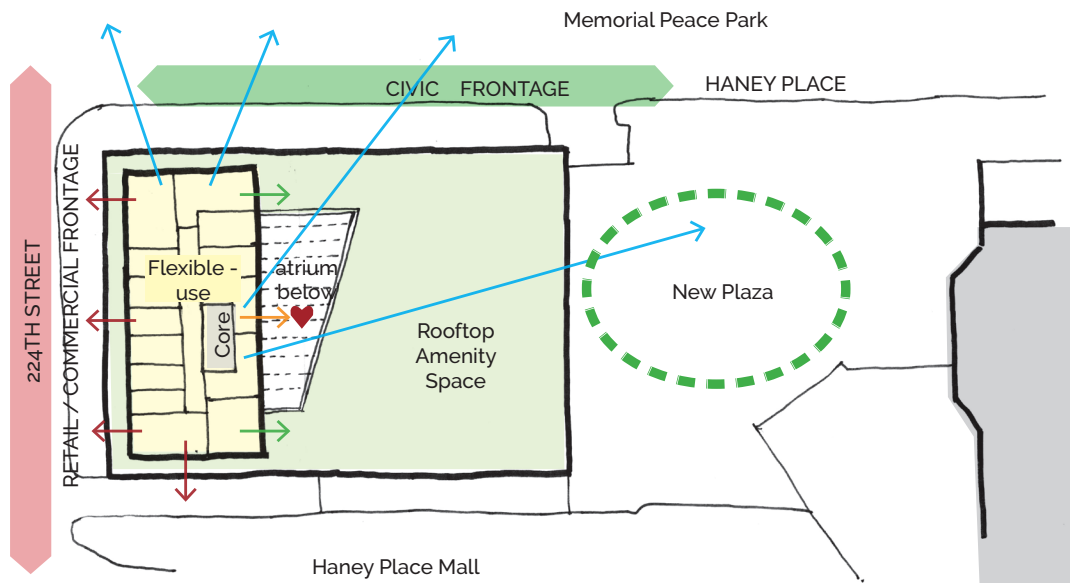


LEVEL 2

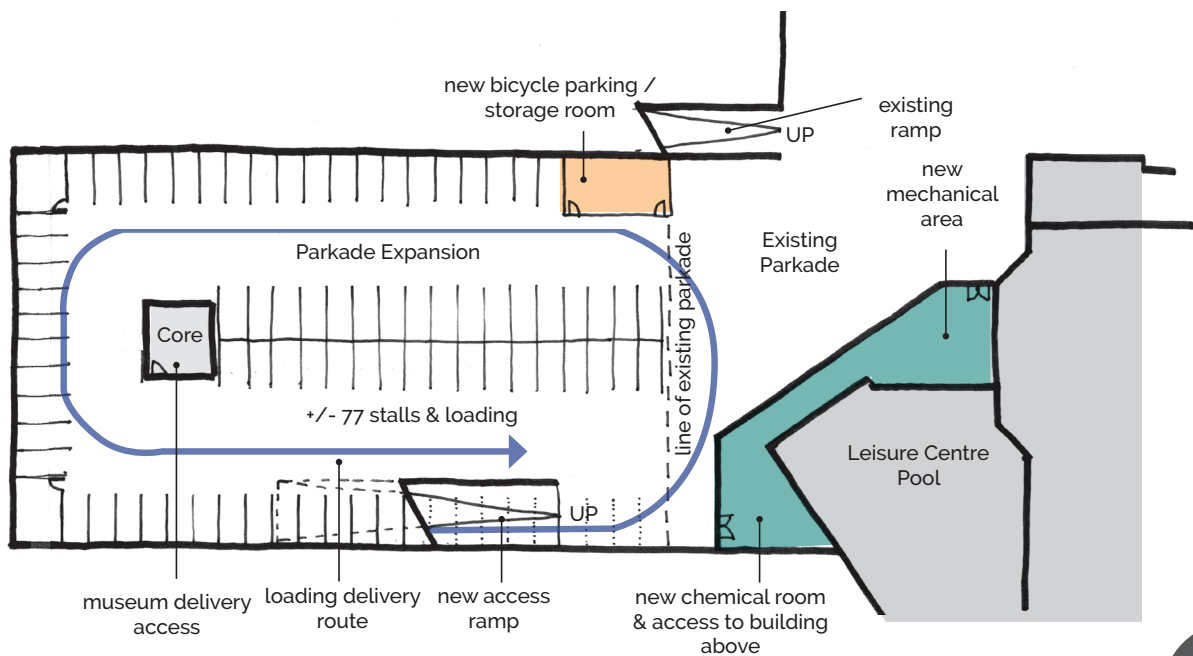


CIVIC & CULTURAL FACILITY SITE PLAN

LEVEL 3-6



PARKADE



CIVIC & CULTURAL FACILITY

5