

# Downtown Enhancement Project

Lougheed Highway: 224 Street to 226 Street

Construction Update



## Update #3, September 7, 2018

Construction on the next phase of the Downtown Enhancement Project—Lougheed Highway from 224<sup>th</sup> Street to 226<sup>th</sup> Street—is now well underway on the north side of Lougheed Highway. This phase of the project includes:

- roadway excavation with the construction of new concrete curbs, sidewalks and street lights
- replacement of the existing storm water sewers
- planted medians with new street trees complete with modular soil systems and irrigation
- traffic signal modifications, pavement markings, and asphalt milling and paving.

The objectives of the Downtown Enhancement Projects include increasing the livability of the Town Centre, supporting business growth and encouraging future investment in the area, while enhancing the street experience for pedestrians and shoppers and the safety of road users.

### For More Information

Please visit [www.mapleridge.ca/1867/](http://www.mapleridge.ca/1867/) for regular updates on the progress of this project.

If you have any construction-related questions or concerns, please contact Shahrzad Honarmand, Project Manager, City of Maple Ridge, at 604-467-7349.

## Construction Schedule update

*This update focuses on construction occurring on the north side of Lougheed Highway between 224<sup>th</sup> and 226<sup>th</sup> Street. Construction dates are approximate and may change due to factors such as weather or unforeseen ground conditions.*

### What has been completed to date

- Removal of existing north sidewalks, curbs and street trees [From 224<sup>th</sup> Street - 226<sup>th</sup> Street]
- Installation of north silva cells for new street trees [From 224<sup>th</sup> Street - 226<sup>th</sup> Street]
- Installation of new north storm water sewer system [From 224<sup>th</sup> Street - 226<sup>th</sup> Street]
- Installation of temporary paved walkway for business access

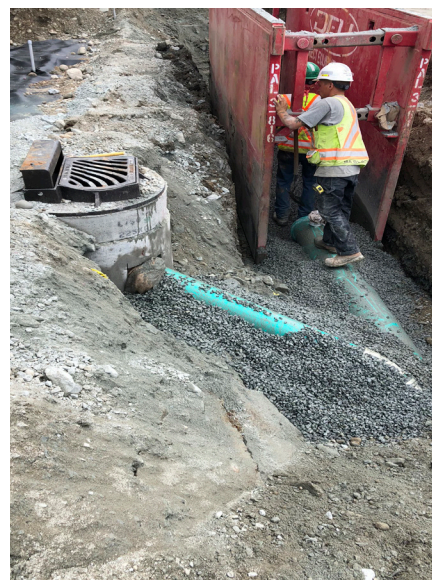
### What's planned for the next two weeks

- North-Side Concrete Curb Installation [From 224<sup>th</sup> Street - 226<sup>th</sup> Street]
- North-Side Drainage Tie-ins [From 224<sup>th</sup> Street - 226<sup>th</sup> Street]
- Traffic Signal Base Installation [North side at 225<sup>th</sup> Street]

*See maps on page 2 for expected work zone areas for the next two weeks.*



New 1350mm overbuild manhole installed at 225<sup>th</sup> Street on the north side of Lougheed Highway.

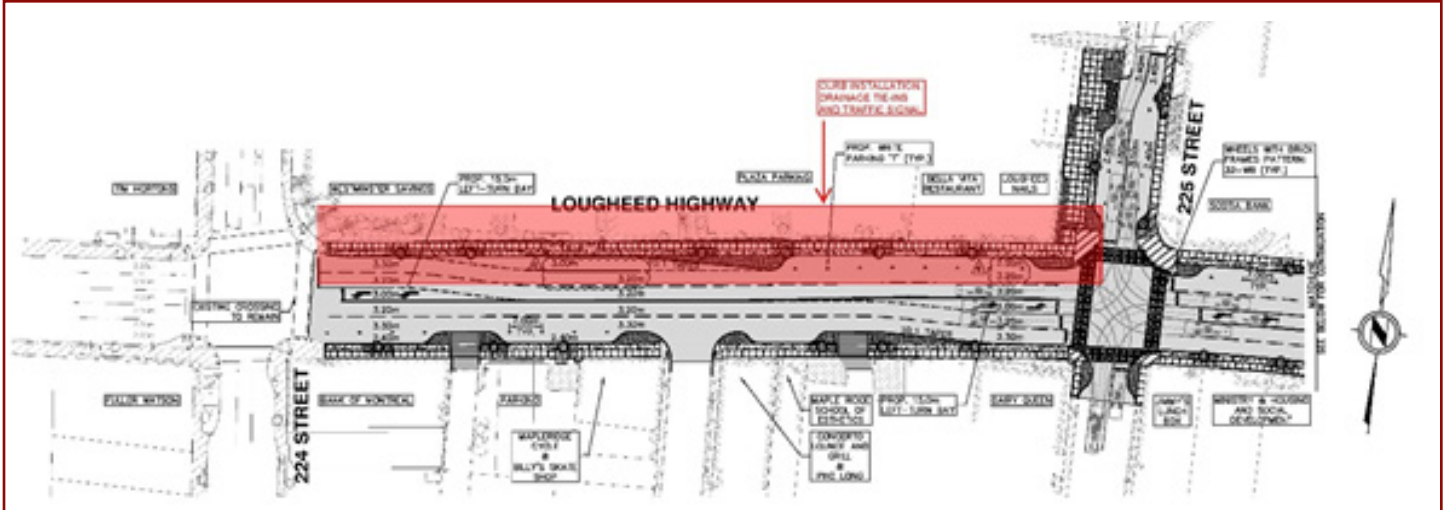


Connecting a new catch basin lead to the new storm sewer main on the north side of Lougheed Highway.

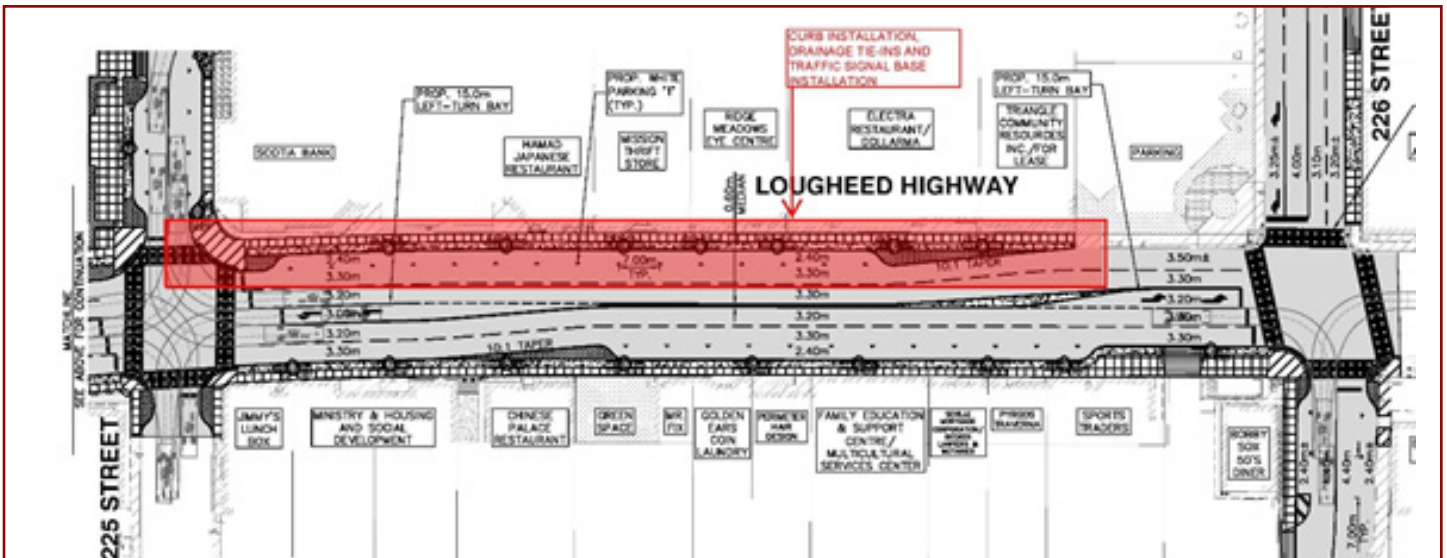
# Expected work zone areas

September 7 - 21, 2018

## Lougheed Highway [224<sup>th</sup> - 225<sup>th</sup> Street]



## Lougheed Highway [225<sup>th</sup> - 226<sup>th</sup> Street]



### City of Maple Ridge Contacts

Engineering Department

- Shahrzad Honarmand: 604-467-7349  
shonarmand@mapleridge.ca
- Ron Guy: 604-467-7367  
rguy@mapleridge.ca

Economic Development & Civic Property Department

- Bruce Livingstone: 604-467-7491  
blivingstone@mapleridge.ca



[mapleridge.ca](http://mapleridge.ca)