



# **Setting yourself up for success**

## **A Case Study from New Westminster's Urban Forest Strategy**

Trevor Cox & Camille Lefrançois  
Diamond Head Consulting

## Departments involved in the managing the urban forest:

Parks

Private/Planning/Parks

Engineering

Planning/Engineering/Parks

PARK TREES AND  
FORESTS

FRONT-YARD, BACK-YARD AND SIDE-YARD TREES

BOULEVARDS AND STREET  
TREES

PLANTERS, PLAZAS AND PARKING LOT TREES



PARKS / PUBLIC REALM

RESIDENTIAL NEIGHBOURHOODS / PRIVATE REALM

STREETS / PUBLIC REALM

COMMERCIAL + INSTITUTIONAL AREAS / PRIVATE + PUBLIC REALM



## CURRENT POLICIES

*The City of New Westminster uses a comprehensive set of policy documents to articulate and implement the goals and objectives of the community.*

## POLICY OPPORTUNITIES

*Specific management policies - guided by an overarching Urban Forest Management Strategy - can ensure trees are considered throughout all stages of the regulatory process.*





Step-by-step process for New Westminster's Urban Forest Strategy, from development to implementation:

- Key factors leading to success
- Lessons for successful implementation

## Steps for developing the Urban Forest Strategy

Identify need

Interviews,  
policies + trends

BMPs + tools

Adopt the UFMS

Implementation

## Why did New Westminster need a plan?



- New awareness of urban forestry
- Recognition of increasing development & the loss of trees

Policies + trends

BMPs + Tools

Adopt the UFMS

Implementation

## What did the data say?



Inventory and analysis was fundamental to telling the story

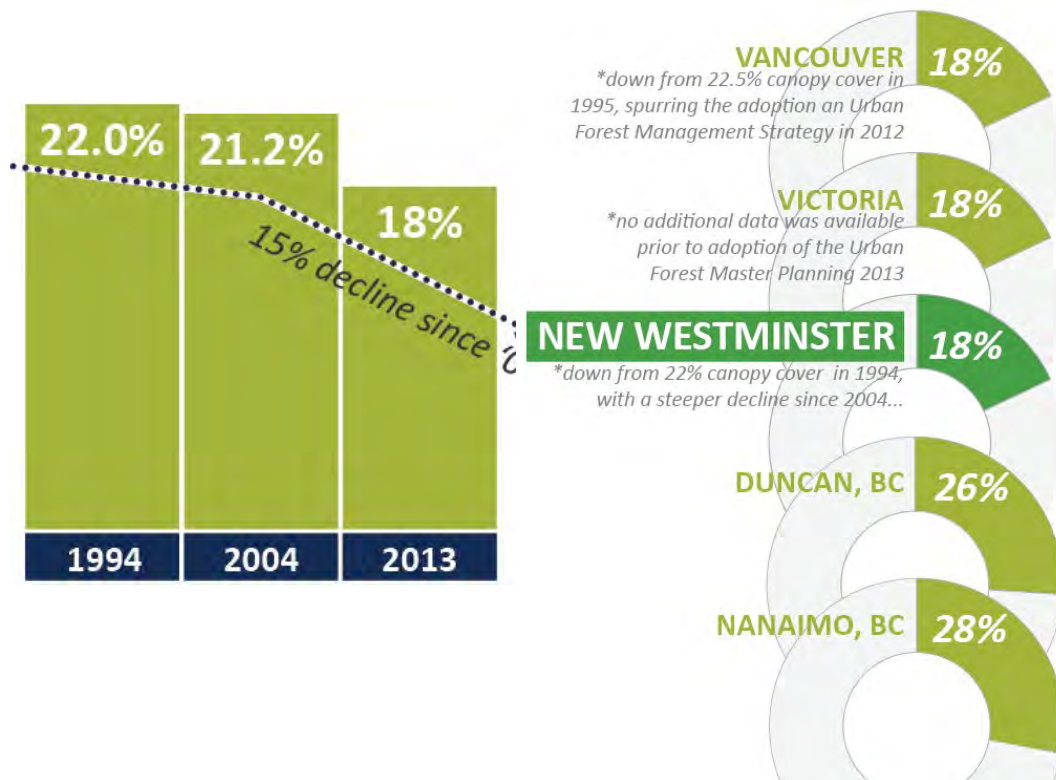
Policies + trends

BMPs + Tools

Adopt the UFMS

Implementation

## What did the data say?



## A good news story?

- Highlighted opportunities
- Looked at how the public & private sector could participate

\* Presented the issue as > than a parks problem & > than a public sector problem

Policies + trends

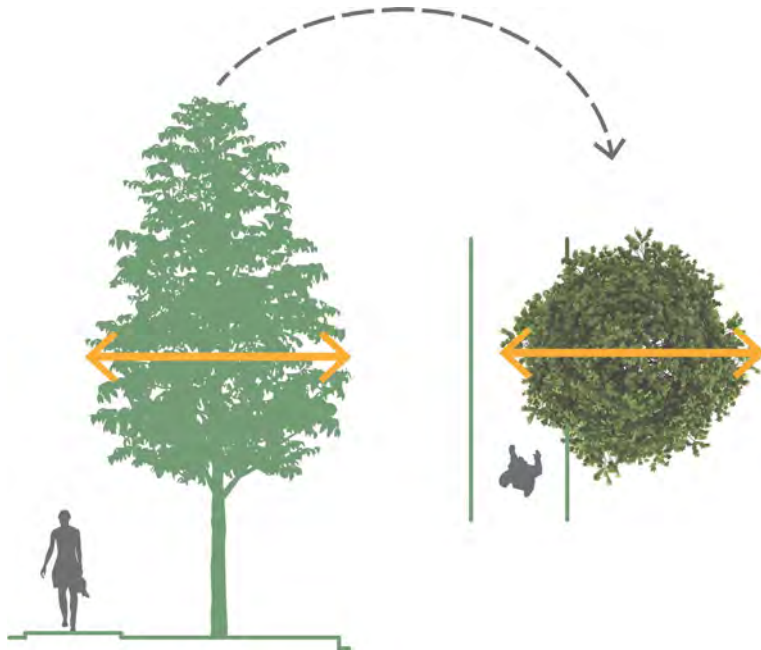
BMPs + Tools

Adopt the UFMS

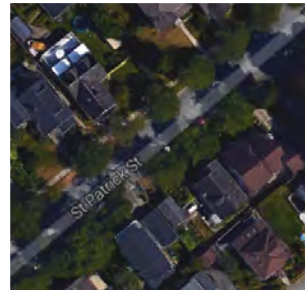
Implementation

## What was the story?

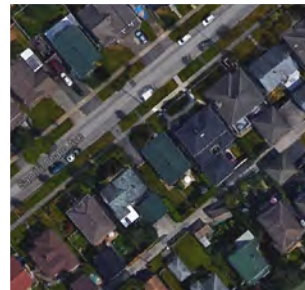
Key metric:  
Canopy cover



85% West 10th Avenue, Vancouver



40% St Patrick Street, New Westminster



10% Sandringham Avenue, New Westminster



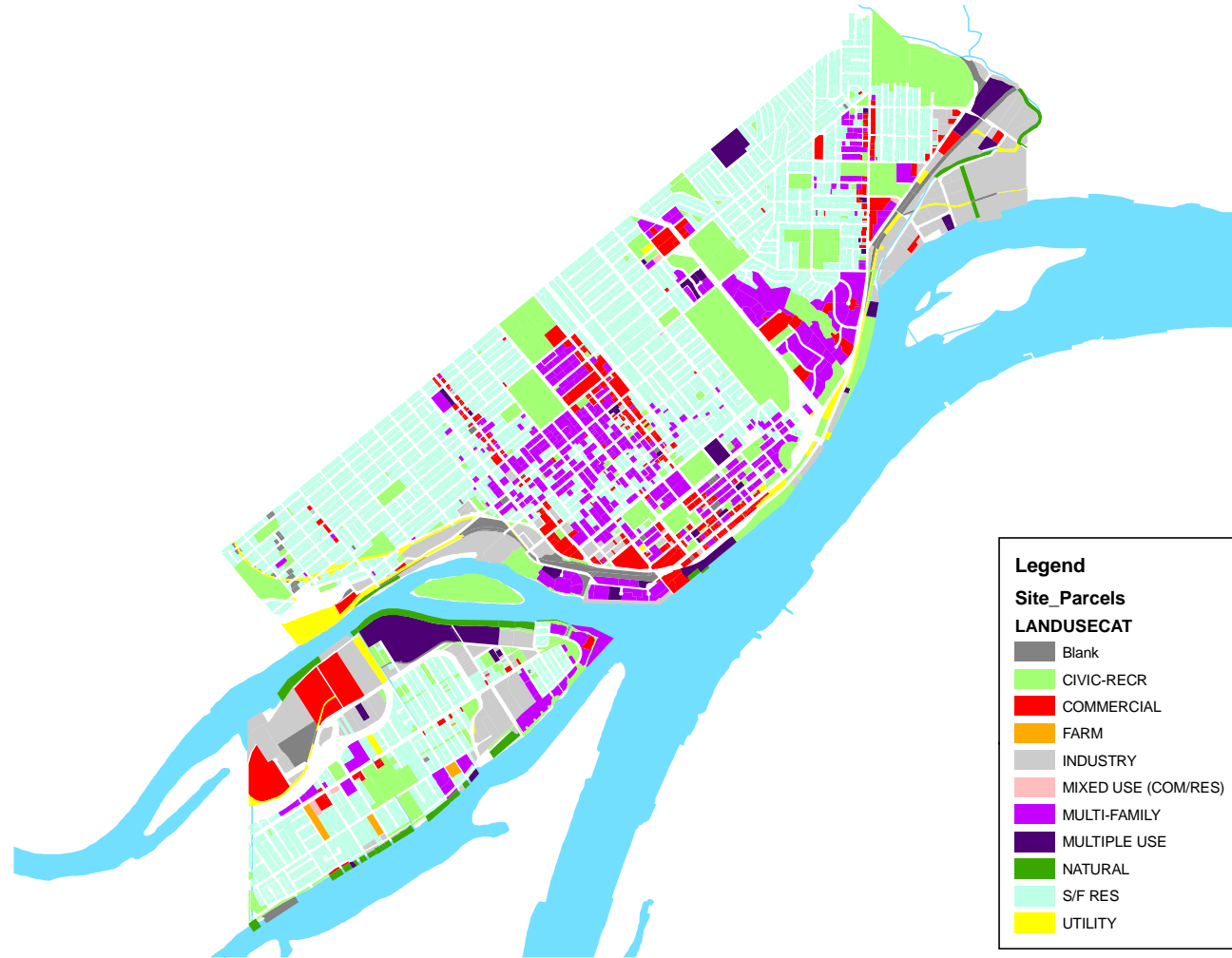
Identify need

BMPs + Tools

Adopt the UFMS

Implementation

## What was the story?



Identify need

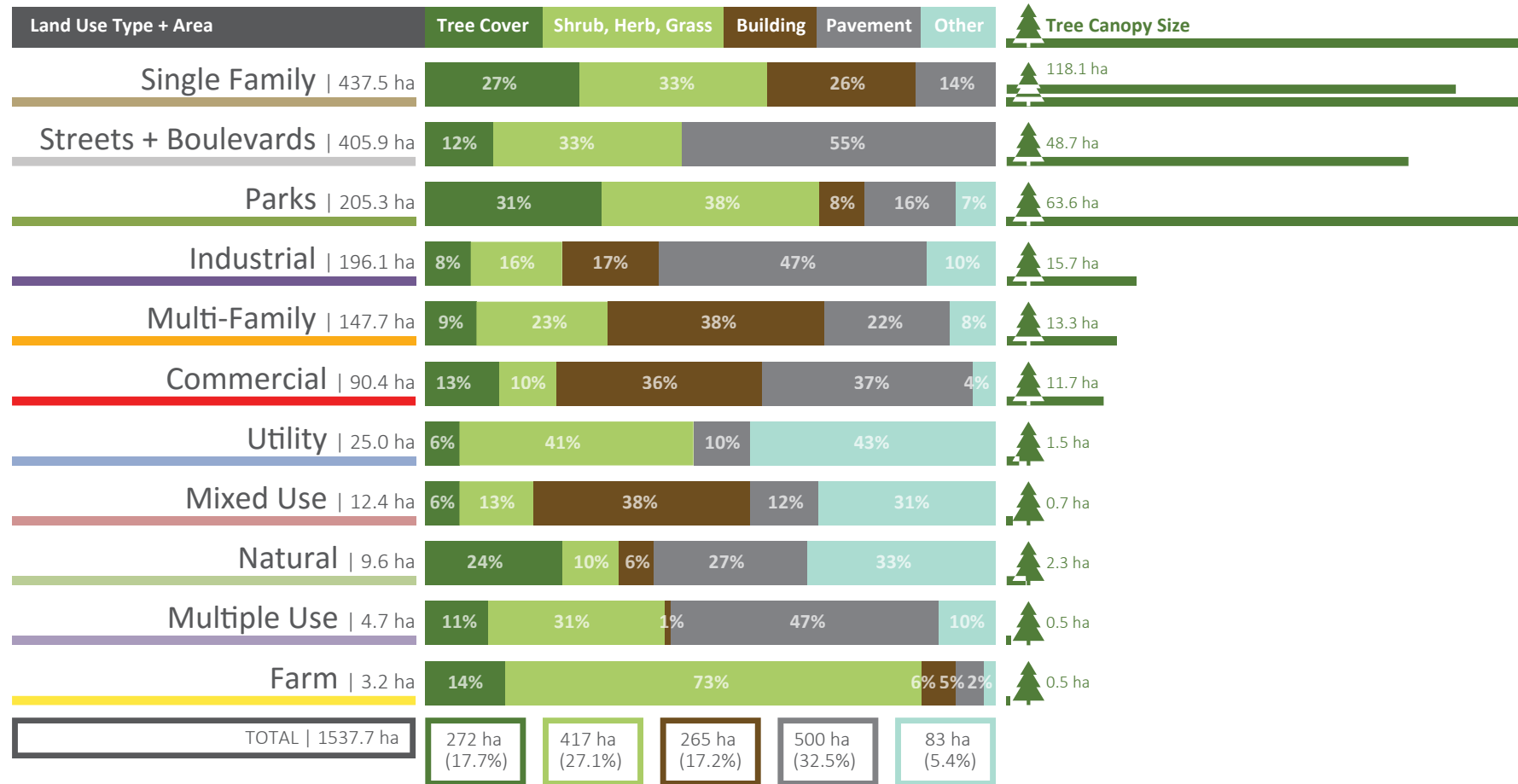
BMPs + Tools

Adopt the UFMS

Implementation

## What was the story?

### LAND USE STATISTICS - RELATIVE (%) COVERAGE and ABSOLUTE (ha) COVERAGE



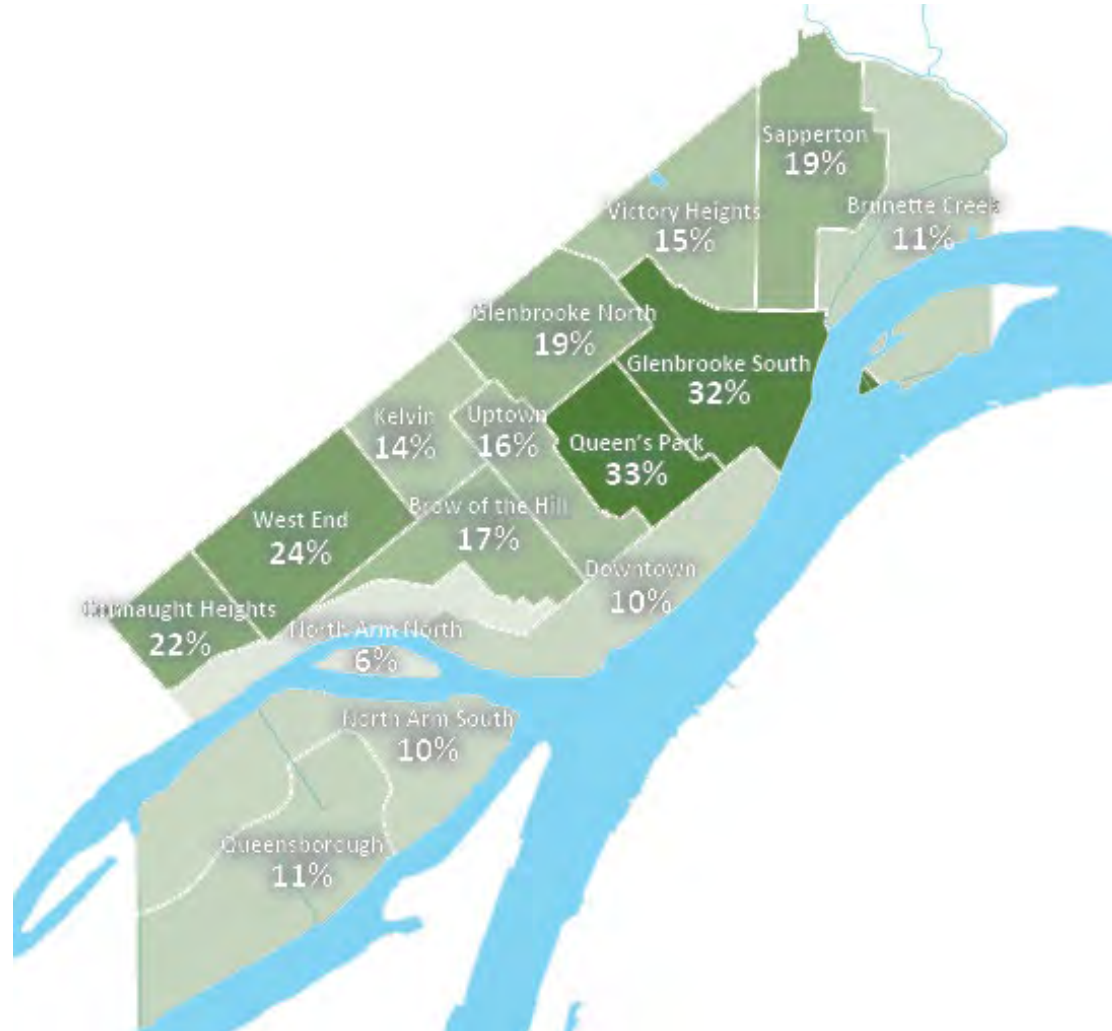
Identify need

BMPs + Tools

Adopt the UFMS

Implementation

## What was the story?



Identify need

BMPs + Tools

Adopt the UFMS

Implementation

## Identifying people who work around trees

Public sector: What are all the departments that work on or around trees?

- Everyone was engaged: from policy planners to maintenance and operations
- The story was adapted to the audience

Community: provide a role to the community

- Visioning
- Are there key stakeholders?

 **Council was brought along from the very beginning of the process**

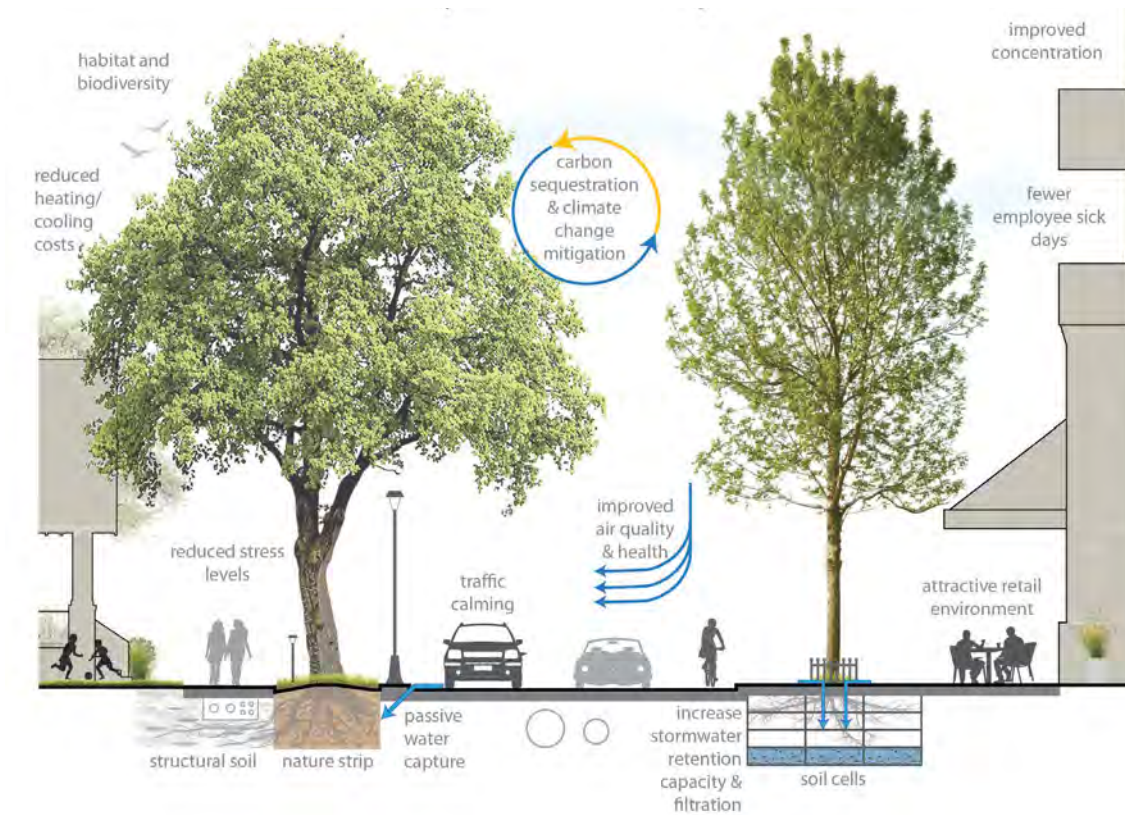
Identify need

BMPs + Tools

Adopt the UFMS

Implementation

## Considering green infrastructure as a capital asset



Identify need

BMPs + Tools

Adopt the UFMS

Implementation

## Choosing from the tools available to manage green infrastructure

In the case of New Westminster, the tool that would have the biggest impact was regulatory, a tree protection bylaw.

Tools to address these targets:

- Protect
- Enhance
- Engage

 **New West didn't reinvent the wheel, they just found the right tools**

Identify need

Policies + trends

Adopt the UFMS

Implementation

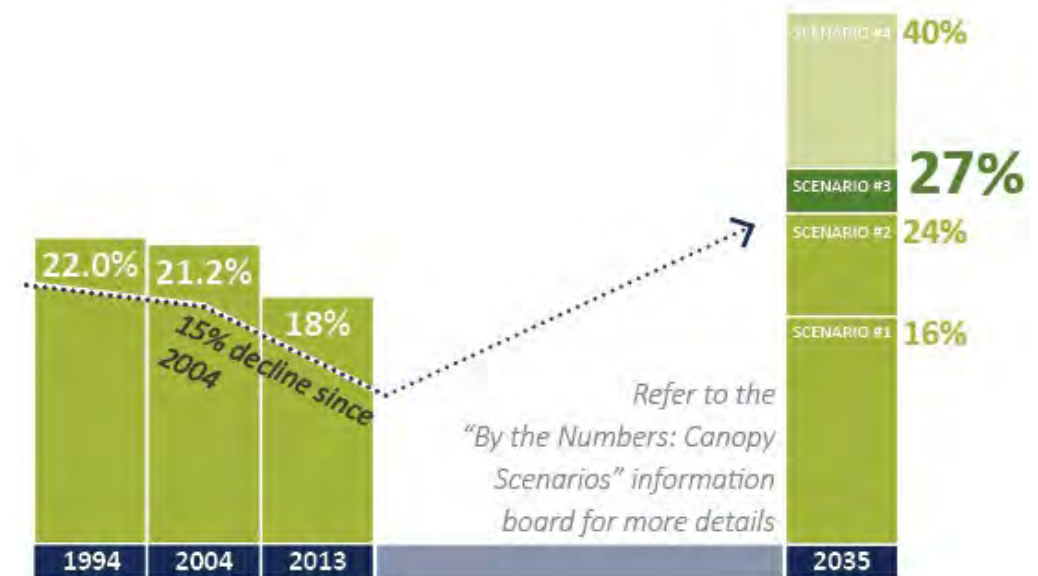
## Choosing a reasonable target

“Ambitious but achievable” - Mayor Côté

To achieve this target, NW will require:

- 3,300 tree planted on private land
- 8,500 trees planted on public land

Over the next 20 years



Identify need

Policies + trends

BMPs + Tools

Implementation

## Say what?!



### New West trees are rapidly declining

City of New Westminster takes action to reverse the trend

Theresa McManus / New West Record  
JANUARY 14, 2016 10:57 AM



*“city council has also adopted in principle the new  
“10,000 trees in 10 years” program”*

“Mayor Jonathan Cote said the city isn’t just placing the burden of tree retention on private property owners through a tree protection bylaw but is showing leadership through its goal of planting of 10,000 trees in 10 years.”

Identify need

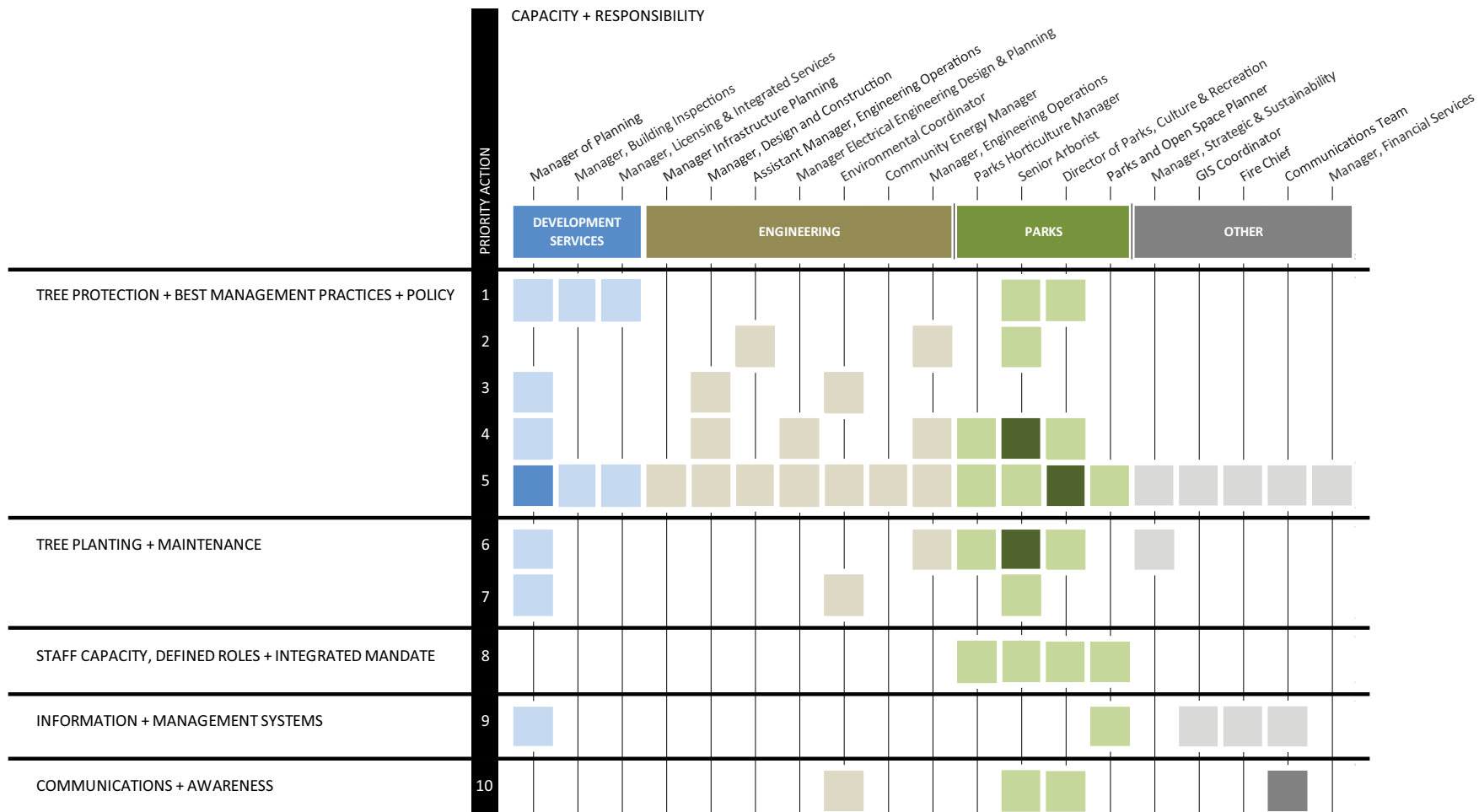
Policies + trends

BMPs + Tools

Implementation

# Adopt the Urban Forest Management Plan

## Evaluating the required resources and responsibilities



 Planning for the resources that will be required to achieve the target

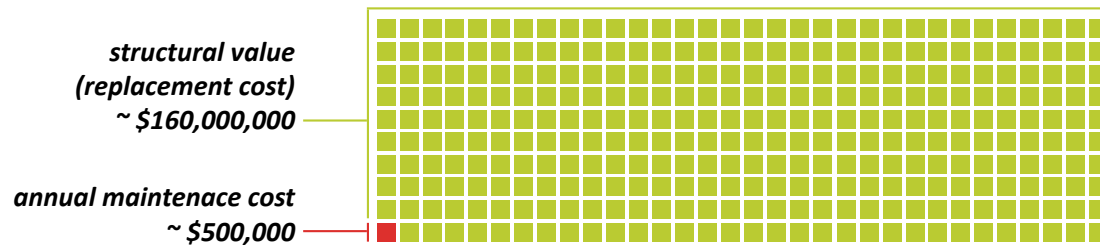
Identify need

Policies + trends

BMPs + Tools

Implementation

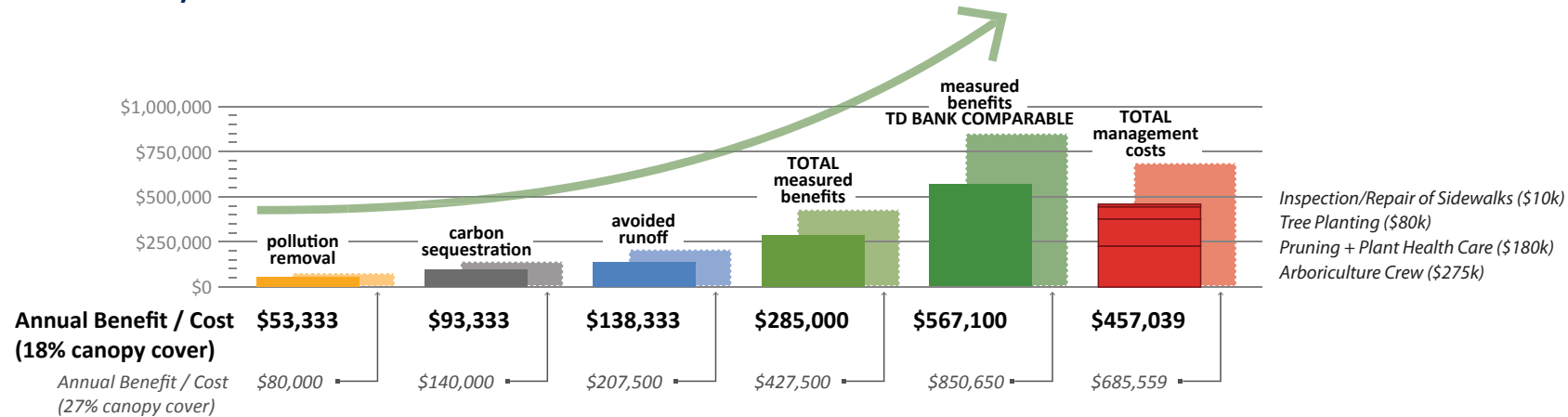
## The cost benefit analysis



Highlighted the cost for managing the asset vs. replacing it over time:

- Trees generally appreciate over time

Currently “measured” benefits + annual maintenance



Identify need

Policies + trends

BMPs + Tools

Implementation

Where is the City with the implementation?



Identify need

Policies + trends

BMPs + Tools

Adopt the UFMS

## What were the success factors?

- Staff champion
- Continued interdepartmental collaboration
- Appropriate resourcing over time
- Prioritized implementation plan/roadmap
- Time and timing!
- Strong support from within the municipality and the community

### SCENARIO 3

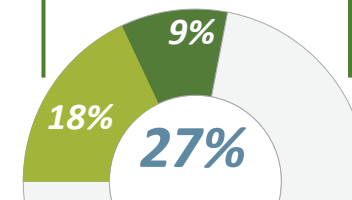
**shared priority**  
*private - public*  
*partnership*

*9% canopy increase*  
*over the next 20 years*

**10%** *canopy increase*  
*for single family*  
*neighbourhoods*

**19%** *canopy increase*  
*for public streets*  
*and boulevards*

**7%** *canopy increase*  
*for public parks*



**\* The private and public partnerships were key**

Identify need

Policies + trends

BMPs + Tools

Adopt the UFMS



**Thank you!**