

Hammond Area Plan

History of Community Spaces



No. 2
June 2014



The Dale Hall and bank building, which was destroyed by fire in 1916.
Maple Ridge Archives—P00753

Hammond's history of social events in the early days is described by John McIver in his 1933 notes (published in *The Gazette* in 1958). The women held "quilting bees", which were usually followed by a dance. Several large families would attend the dances, which went well into the wee hours of the morning and included square dancing as well as card games of poker and euchre.

Theatrical Productions

By the early 1920's theatrical productions created more opportunity for social activity through the Gilbert and Sullivan operettas staged by the Hammond Glee Club. J.C. Welch was the Glee Club director and came out weekly from Vancouver by train for rehearsals. Various plays were performed, including *The Gondoliers*, *Mikade*, *Pirates of Penzance*, and *H.M.S. Pinafore* at the Hammond Hall.



Photo at Right: A Maple Ridge Glee Club Performance at Hammond Hall (1928).
Maple Ridge Archives—P01014

Hammond Hall

The location of the Hammond Hall was carefully chosen right next to Hammond Park on Lorne Avenue (the land for the park had been donated by John Hammond). Funds for building the hall came from community subscription.

Hammond Hall opened on July 1, 1921. The Hammond Women's Institute oversaw operation of the Hall from 1939 until its closure in 1961. The current Hammond Community Centre on Westfield Avenue opened in 1978.



Photo at Right: Hammond Hall at northeast corner of Lorne Avenue and 206th Street (1959).
Maple Ridge Archives—P01138

Baseball

Amateur baseball has always been a popular sport in Hammond and in the early days was practiced and played in McIver's fields before a baseball diamond was established in what is now known as Hammond Park. The Hammond Cedar team (sponsored by the owner of the mill) attracted very talented players from far away places:

D.M. Hartnell, the sponsor of the Hammond Cedar team, was determined to bring a baseball championship to Hammond. In 1924 he recruited players from the United States and eastern Canada, offering them the added inducement of a good job at the mill. His ambition was realized when the Hammond Cedar team brought home the B.C. championship trophy that year. The team went to defeat Calgary, and the only thing that stopped them from contesting the Canadian championship was an unusually early snowfall. (Nickols et al., 1972)

A rivalry had always existed between the Hammond and Port Haney ball teams, with Maple Ridge baseball fans divided between the two. Everyone would come out to watch the baseball games, as there was little other entertainment at the time.

Hammond Stadium

The 1950's campaign for a baseball stadium was led by Ted Bowyer, the "unofficial mayor of Hammond". Ted Bowyer worked at the Hammond Mill and after he returned from WWII, he was the Hammond postmaster for 15 years, retiring in 1962. He loved sports, but baseball was his favourite and he had been very involved as a baseball player, coach, club president, and a guide to many Hammond teams.

Ted was successful in raising nearly \$10,000 for the stadium project in just a few days. This was enough money to build the stadium. Sometime later, the District of Maple Ridge paid off a mortgage on the grounds and took over the management of the facility.

On July 22, 1957, the stadium was officially opened in Hammond by Reeve S. Mussallem. The Park was considered to be one of the finest of its kind in the region. Three games were scheduled to celebrate the opening of the ball park and thousands of people attended.

Today the Hammond Stadium Park also includes a basketball court, tennis court, soccer field and outdoor pool. Currently, Hammond Stadium Park is going through some renovations, which are anticipated to be completed this Fall.



Photo Above: The Hammond Cedar Baseball Team in 1924.
Maple Ridge Archives—P03920



Photo Above: A large group photo for Hammond Pony League Tournament in 1956. The girls in front with their chaperone were the "princesses" from whom one would be chosen by lot to be Queen.
Maple Ridge Archives—P03609

Photo at Left: Larry Walker Sr. grew up in Hammond and as a child watched his father, Ken, play baseball. A talented baseball player, Larry played for an American farm team when this photo was taken in 1953. Larry Sr. is the father of now retired Major League Baseball player Larry Walker Jr.
Maple Ridge Archives—P03845

Hammond Pool & Community Centre

The Hammond Pool and Community Centre are both located within the Hammond Stadium Park.

Located outdoors, the Hammond Pool is open during warm weather months from July 1st to September long weekend.

The Hammond Community Centre has meeting/ activity space for rent with a capacity of 150 people. A full-time daycare is run out of this facility.



Above Photo: Opening day of the Hammond Pool in 1963.

Maple Ridge Archives: P04602



Photo at Left: Inside of Hammond Community Centre, in 1978-79, shortly after it was built.

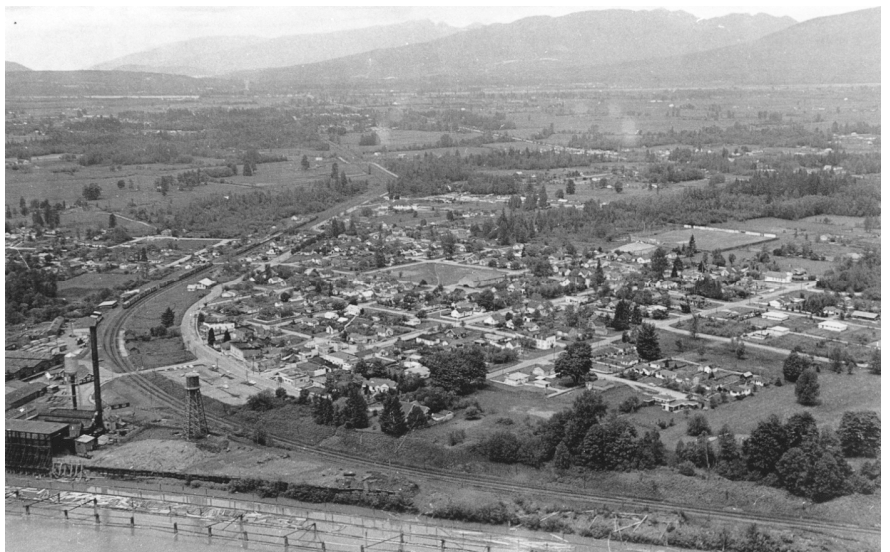
Maple Ridge Archives: P04602

Hammond and Tolmie Parks

According to a newspaper article, dated May 28, 1979 (thought to be *The Gazette*) two parks were intended for the original township plan registered in 1883. One of these is known today as Hammond Park and the other is Tolmie Park. A “park” designation for both of these parcels was not undertaken until 1979, when this oversight was rectified by the Province. The 1979 newspaper article states that both of the parks were set aside for park use, but were not shown as “park” on the original plan. Until that time, formal ownership had never been transferred to the municipality, however, municipal ownership of the park lands had always been assumed. Hammond Park is located in the portion of land donated for Port Hammond Junction by the Hammond brothers and Tolmie Park is located within the portion of land donated by Emmeline Mohun.

Before the Hammond Stadium was built, baseball was played in Hammond Park. Hammond Park now has a basketball court and a tennis court. Tolmie Park still has a softball/baseball diamond and both Parks have various other facilities including playgrounds.

We know who Hammond Park is named after, but what about Tolmie Park? It appears to have been named after Andrew Ross Tolmie, who lived in Hammond for 40 years and died in 1933 at the age of 62. His death announcement in *The Gazette* (dated March 30, 1933) states that Tolmie “was instrumental in the erection of what is now the Hammond United church, but that then housed the Presbyterian congregation”.



Above Aerial Photo: Hammond in 1946. Hammond Park and baseball diamonds are visible in the centre of the photo.

Maple Ridge Archives

Emmeline Mohun Park

The official opening of the Emmeline Mohun Park on Wharf Street was held on May 3, 2014. The Park is located on a piece of the land that Emmeline donated for the creation of Port Hammond Junction in 1883. Members of the Katzie First Nation were in attendance, including Chief Susan Miller, and provided a special welcome and blessing over the park. The Emmeline Mohun Park will provide direct public access to the Fraser River waterfront for the community. A Steering Committee worked with Ridge/Meadows Parks staff to come up with the park theme, design, and amenities.



Above Photo: Emmeline Mohun Park on opening



Above Photo: Maple Ridge Golf Course in 1946.
Maple Ridge Archives P277



Above Photo: Hammond Ladies Golf Club (1927).
Maple Ridge Archives—P00228

Golf

The Maple Ridge Golf Course was opened on Labour Day in 1925, when Mrs. John Martyn, wife of the Reeve, was the first to tee off. The idea of building a golf course came from Hammond resident, Thomas Lowrie, who was a poultry farmer of Scottish descent. Earlier that same year, Lowrie convinced John McIver to lease the land that would become the golf course. First though, McIver let Lowrie and a group of bankers and businessmen try out their idea on the land for one month to see if it would prove successful.

The golf course proved to be very popular and on October 1, 1925, thirty-five acres of McIver's lands became known as The Maple Ridge Golf Course. A golf pro from Vancouver helped with the course design and in 1927 a clubhouse was built. Mr. and Mrs. McIver were one of the first members and their daughter Jean was one of the first junior members. Jean won the club championship in 1930 and she continued playing golf throughout her life.

The golf course lands were purchased by the District of Maple Ridge in 1972 for \$350,000. The Maple Ridge Golf Course remains in operation today as a 9-hole executive size course.

References:

- 1883 Error is Remedied. (1979, May 28). *The Gazette*.
- Gift of Hammond Bros. to be Place of Beauty: Work to be Hastened. (1924, February 14). *The Gazette*.
- Maple Ridge Museum & Community Archives (2009). Community History. www.mapleridgemuseum.org.
- "Mayor of Hammond" Moves to Haney. (1962, October 4). *The Gazette*, p. 8.
- McIver, John, "From John McIver's Notes: First Settlement Began in 1860 Records Show". *The Gazette*.
- Nickols, Sheila (editor), Violet Bokstrom, Isabelle MacDonald, Grace Mussallem, Daphne Sleight, Margaret Smith.
- Maple Ridge: A History of Settlement*. Maple Ridge: Canadian Federation of University Women (Maple Ridge Branch), 1972.
- New Park Hammond Opens Sunday; Ball Games Arranged. (1957, July 19). Vol. 31, Number 45.
- One More Maple Ridge Pioneer Passes. (1933, March 30). *The Gazette*.
- Waite, Donald. *Maple Ridge & Pitt Meadows: A History in Photographs*. Maple Ridge: Waite Bird Photos Inc., 2008.