

WEBSTER'S CORNERS

James Murray Webster first settled in this area in 1882, and opened a Post Office in his house in 1891. The area was wilderness at the time, and enormous first growth trees had to be cleared in order to plant crops. A school was built in 1896 in a small clearing near the location of the present day school, and a Methodist Church built on Dewdney Trunk Road in 1912. The first Finnish settlers moved here after the failure of the utopian socialist commune at Sointula on the the north end of Vancouver Island. Casting about for a way to sustain the settlement, their leader, Matti Kurikka, obtained a shingle bolt contract at Webster's Corners, and several families arrived here on January 1, 1905 to work on this contract; some of them stayed in the area, and a small Finnish community was born. To this day a number of early Finnish homes still retain their separate saunas.

HISTORIC BUILDINGS IN WEBSTER'S CORNERS

Myntti Residence
25458 125 Avenue

Katainen Residence
25575 125 Avenue

Log Residence 12263 256 Street

Ansell Residence
24750 Dewdney Trunk Road

Webster's Corner United Church
25102 Dewdney Trunk Road

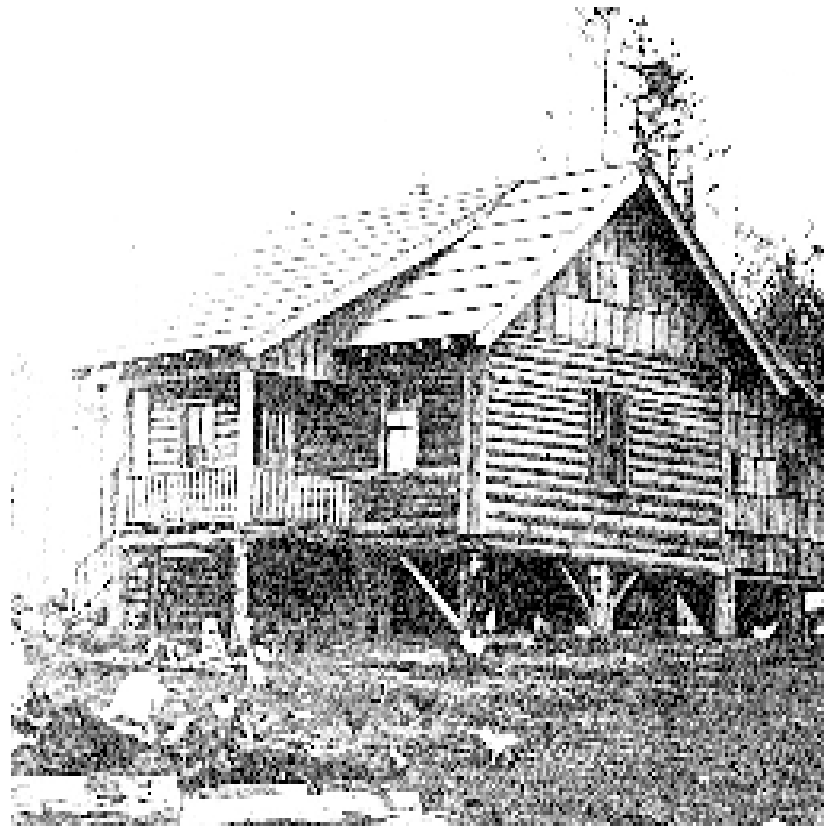
Sampo Hall
25470 Dewdney Trunk Road

Webster's Corner Commercial Building
25569 Dewdney Trunk Road

Webster's Corner Commercial Building
25579 Dewdney Trunk Road

HISTORIC LANDSCAPE FEATURES IN WEBSTER'S CORNERS

Trilliums 26048 116 Avenue



Above: The log house built by Victor Rossi for his family in 1910. M.R.M. & A.

MYNTTI RESIDENCE
25458 125 Avenue
Circa 1919

Built for John Myntti on a ten acre parcel, this house very similar in style and detail to the Albert Gardner Residence in Haney, and may have been built by the same contractor. The open front verandah with arched openings and the side gable roofs of the two buildings are almost identical. This is one of the early remaining farm



KATAINEN RESIDENCE
25575 125 Avenue
1919

This house and its associated outbuildings were built on a five acre site for William Katainen. Located at the corner of 256 Street and 125 Avenue, The house was built in 1919, right after the end of the Great War; the property also retains its well-preserved sauna, a gable-roofed barn and an early garage. Saunas like the Katainen's were a hallmark of the Finnish community - virtually every house built by a Finn had one.





LOG RESIDENCE
12263 256 Street
Circa 1930s

This log house sits on a large rural lot, with a barn at the rear. It retains its early multi-paned wooden sash windows, and the logs are connected with notched corners. The original owner and date of construction are unknown.



ANSELL RESIDENCE
24750 Dewdney Trunk
Road
Circa 1909

This property was owned by W.H. Ansell Jr. It was originally owned by his father who homesteaded a 160 section; he deeded the eastern 80 acres to his son, who built this house. The first house on the site was built in 1900, but appears to have been a smaller structure; it was either demolished, or

incorporated into this newer building. The house is T-shaped, with a tall storey-and-a-half block facing west, with an extension to the rear; the wooden drop siding and double-hung windows are all original features.

**WEBSTER'S CORNER
UNITED CHURCH**
25102 Dewdney Trunk
Road
1912

✪ District of Maple Ridge
Heritage Advisory
Committee Plaque



This church was built by a Methodist congregation on land donated by Mr. Biggs. When the building was two-thirds finished the Methodists were advised that the church would need to be moved because

the land survey had mistakenly included 33 feet of the property of a neighbouring banker. The two Ansell families contributed \$200 to purchase the extra land and the building continued.

The church was built almost entirely of donated labour and materials. The only paid labourer was one carpenter from Haney.

Rev. The church also functioned as a community facility for banquets and concerts, by fitting a platform over the altar steps to form a stage. In the 1920s the church was raised and a basement added. By 1925 the basement was still not finished, making the floor very cold in the winter. A Ladies Aid Society was formed to raise funds to finish and insulate the basement. The work was completed in 1926.

Unification led to the renaming of the church to Webster's Corner United in 1926.



SAMPO HALL
25470 Dewdney Trunk
Road
1915-1916

On January 1st, 1916 the Finnish Hall opened. It was the cultural heart of the community - and was the location of dramas, dances, weddings, funerals, concerts and athletic events. Webster's Corners School held their Christmas concerts here. It was built by volunteer labour by the Finns who

settled in the area, and in 1984 was the last Finnish Hall in the province to be sold. It is now privately-owned, and is used as the Children's Corner Daycare.

There is a memorial on the site, inscribed:

'Sammon Takajat' - 'Forgers of the Sampo'
'Dedicated to the Finnish Pioneers who settled here January 1, 1905.'

**WEBSTER'S CORNER
COMMERCIAL
BUILDING**
25569 Dewdney Trunk
Road
Circa 1932

This commercial building, and the one adjacent to the east, were built on land subdivided in 1928. It was acquired by Archie James and Peter Ferrie, who built these two stores, and another one further to the west that has since been

demolished. They are both front gable structures, with decorative false front parapets that increase their apparent height, and also provided additional opportunity for signs. They define the centre of the Webster's Corner settlement.



**WEBSTER'S CORNER
COMMERCIAL
BUILDING**
25579 Dewdney Trunk
Road
Circa 1932

This, and the similar adjacent commercial building, define the centre of the Webster's Corner settlement. They provide a link with the early commercial history of the area. This building won a District of Maple Ridge Heritage Award in 1997 for Commercial Heritage.





TRILLIUMS
26048 116 Avenue

There are many native Trillium plants on this seven acre property. The Trillium is a liliaceous herb of the genus *Trillium*, having a whorl of three leaves from the centre of which rises a solitary flower. They are protected in Ontario, where they are the Provincial flower.



Above: Jack Bowell and Jim Trethewey in front of a cabin on the Lillooet River, circa 1912 (M.R.M. & A.)