A photograph of a dense forest with tall, thin trees and sunlight filtering through the canopy.

# **CARING FOR OUR NATURE: MAPLE RIDGE ENVIRONMENTAL MANAGEMENT STRATEGY**

**Public Open House – June 20, 2013**

# Agenda

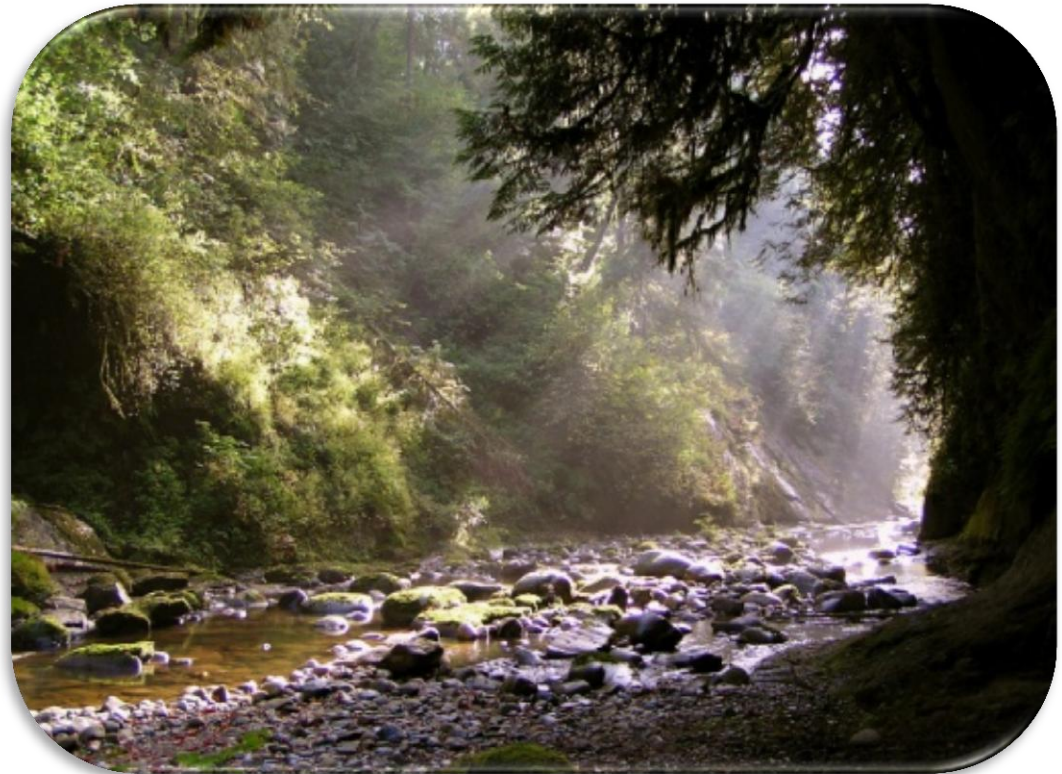
**Introduction**

**OCP Context**

**Key Findings to Date**

**Goals**

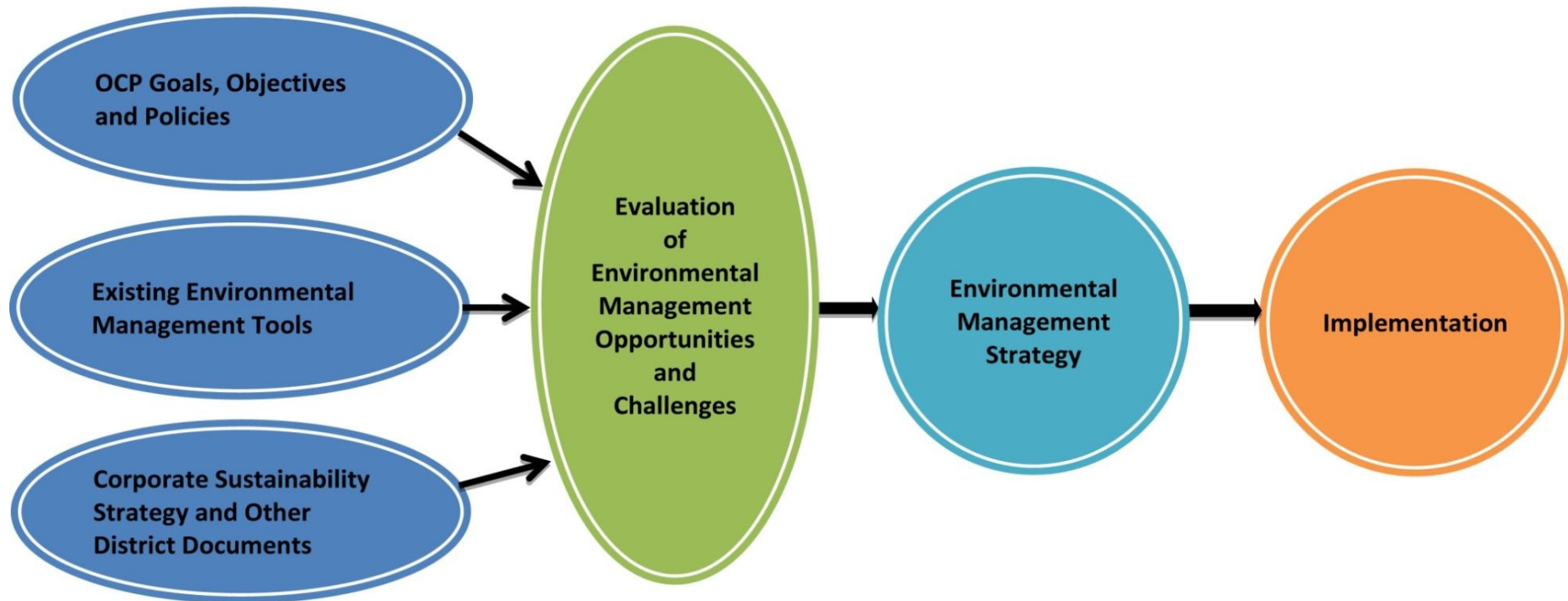
**Potential Strategies**





# What is the EMS?

The primary purpose of the EMS is to consolidate and fine tune environmental policies and practices, incorporating the OCP principles and values that draw people to Maple Ridge



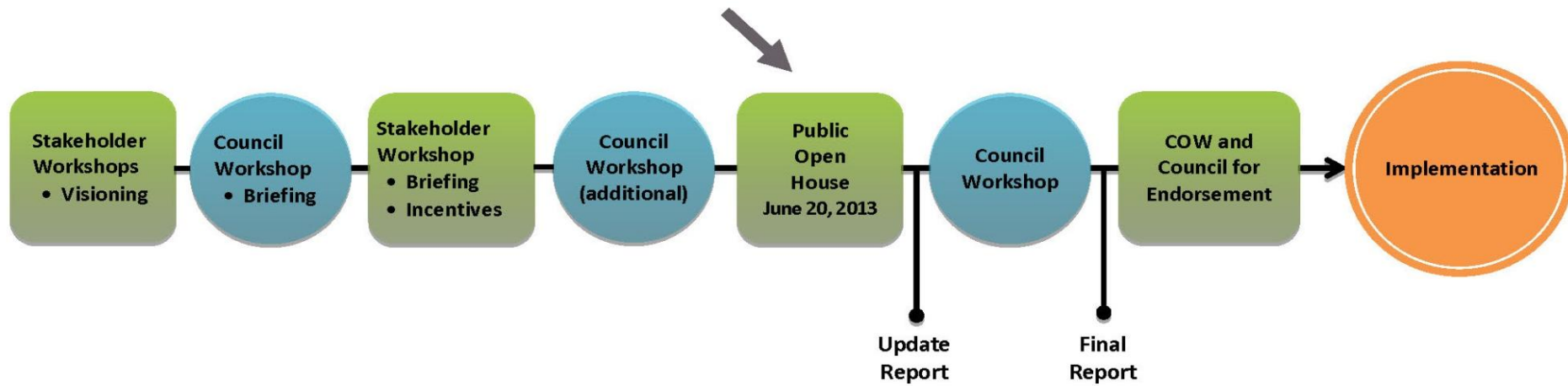
A photograph of a dense forest with tall trees and green foliage, serving as a background for the title.

# Top Reasons for the EMS

- Sustainable management of the natural resources that provide our community with social, economic, and ecological benefits
- Continue to attract and invest in sustainable growth
- Build a resilient community in the face of climate change
- Maximize efficiencies and cost savings associated with the services provided by the natural environment
- Reduce impacts to neighbouring properties from development-related activity

➤ **Essentially it is for our long-term sustainability**

# EMS Process





# OCP Context

## Environmental Management Model – Goals

1. Protect significant ecosystems
2. Anticipate and respond to impacts of climate change
3. Determine appropriate DP guidelines and bylaws
4. Identify requirements for environmental studies or impact assessments
5. Maintain and improve ecosystem health and human safety



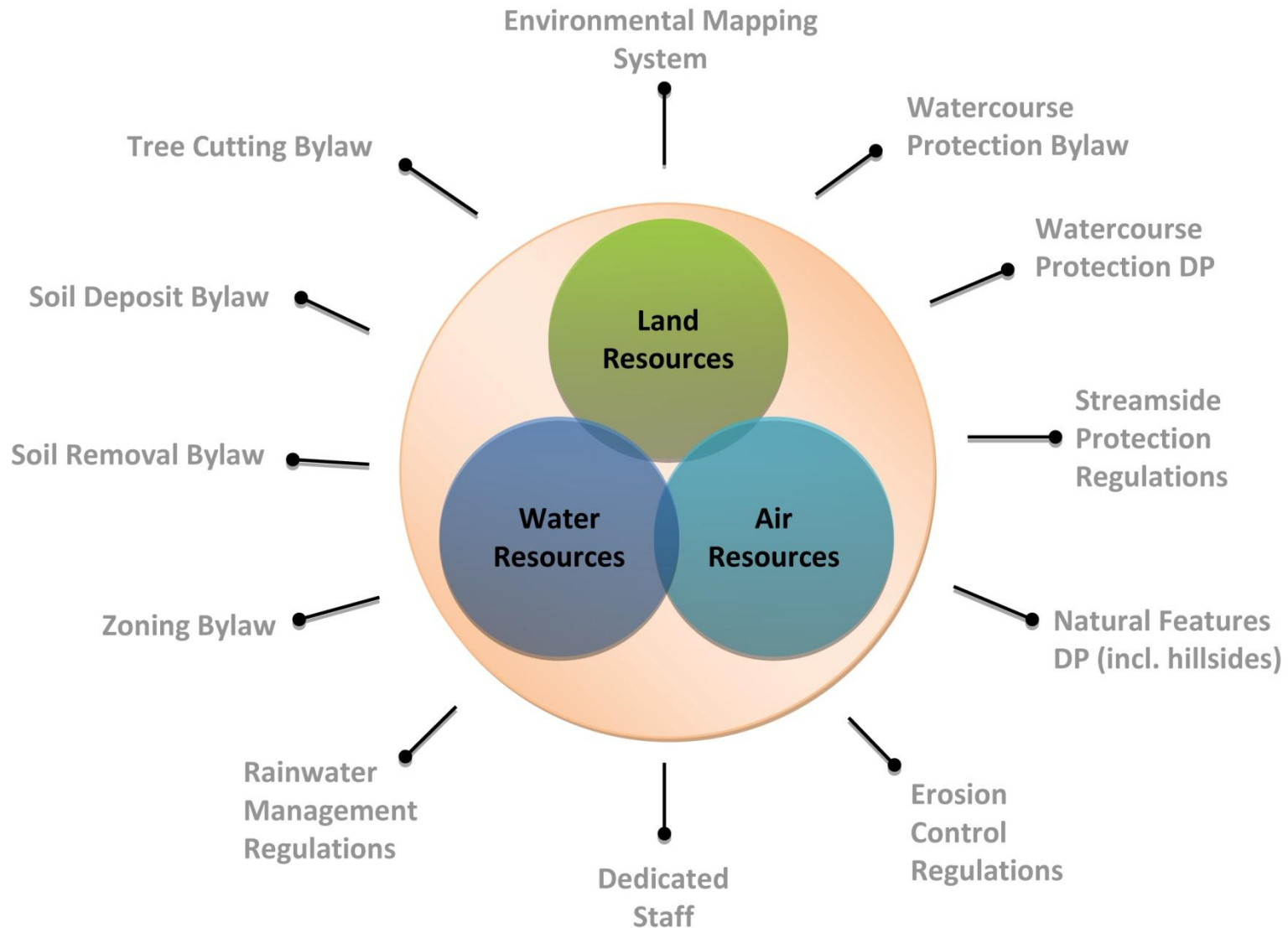
# OCP Natural Features - Objectives

1. A comprehensive approach based on ecosystem principles incorporating land, water and air
2. A perspective that anticipates climate change and strives to reduce its causes while mitigating impacts
3. A balanced evaluation process incorporating economic, social, and environmental sustainability
4. The cultivation and strengthening of community partnerships to help enhance the success of policies and programs.





# OCP and Other Existing Tools





# Key Findings to Date

## Identified Successes

✓ OCP Framework for Environmental Mgt

✓ Streamside Protection Regulations

✓ Environmental Mapping System

✓ Extensive Natural Areas Remaining

✓ Dedicated Knowledgeable Staff

A photograph of a dense forest with tall trees and green foliage, serving as the background for the top section of the slide.

# Key Findings to Date

## Identified Challenges

- ! Appropriate Scale, Long Term Planning
- ! Habitat Fragmentation
- ! Public Desire for Input, Information & Awareness
- ! Tree Removal and Related Impacts
- ! Limited Municipal Environmental Resources



# Key Findings to Date

## Identified Opportunities

➡ Support and Motivation for a Strategy

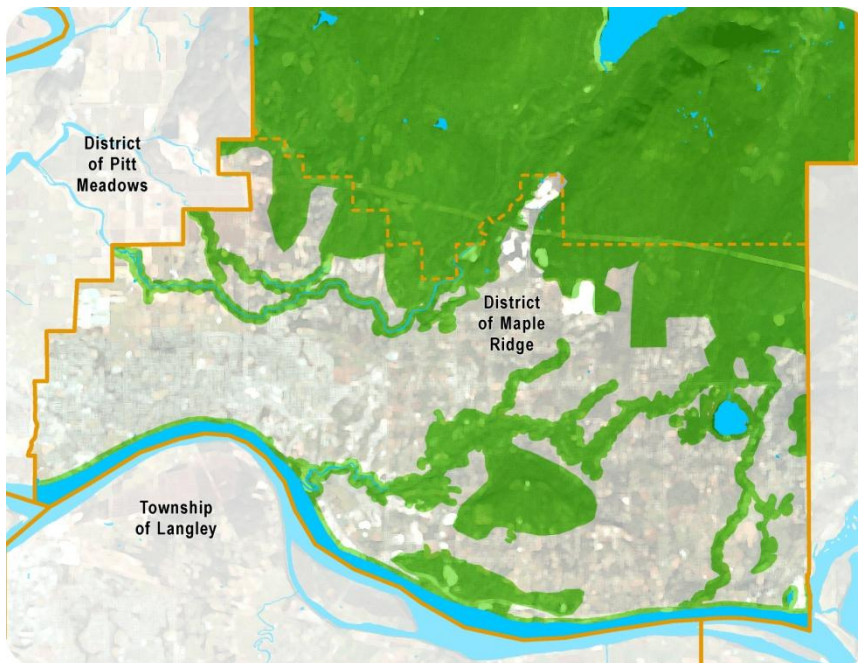
➡ Extent of Natural Environment

➡ Passionate Public

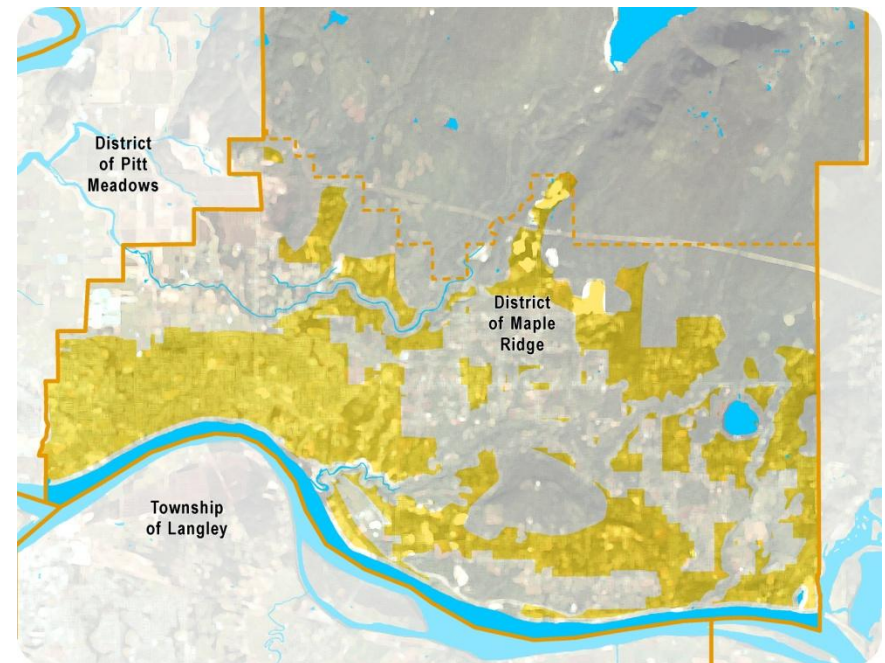
➡ Opportunities for Partnerships

# Proposed EMS Goals

- Goal A: Conserve and manage our natural assets
- Goal B: Design and build sustainable neighbourhoods
- Goal C: Improve communications and environmental awareness



Natural Assets Map



Sustainable Neighbourhoods Map



# Goal A: Potential Strategies

## Goal A: Conserve and manage our natural assets

- A1. Identify, protect and manage the terrestrial and aquatic ecosystems that support important habitats within the District's administrative boundaries.
- A2. Identify, protect and manage Crown lands and watershed areas within and extending beyond the District's boundaries in collaboration with other jurisdictions.



# Goal A: Potential Strategies (cont'd)

- A3. Evaluate the socio-economic values and benefits of natural assets.
- A4. Prepare and implement incentives for land owners to conserve or preserve significant natural areas or features that are not protected under municipal regulations.
- A5. Prepare policies related to filling and environmental practices on agricultural and rural lands.





# Goal B: Potential Strategies

## Goal B: Design and build sustainable neighbourhoods

- B1. Protect, enhance and manage the urban forest in developed and rural areas in recognition of the multiple environmental, social and economic benefits provided by trees. (Tree Management Bylaw)
- B2. In the Watercourse Protection Bylaw, provide more specific design guidelines and maintenance requirements for rainwater management and improve enforcement and monitoring.



# Goal B: Potential Strategies (cont'd)

B3. Refine and clarify the Development Permit (DP) structure.

Watercourse DP

Natural Features DP

Hazards DP

B4. Review and update the Soil Deposit/Removal Bylaws.

B5. Establish incentives for sustainable development practices that capture the spirit of comprehensive “smart growth” principles.

B6. Use adaptive management.




# Goal C: Potential Strategies

## Goal C: Improve communications and environmental awareness

- C1. Improve communications among District staff and stakeholders in the community.
- C2. Expand environmental education and awareness.
- C3. Explore the establishment of an Environmental Advisory Committee.
- C4. Provide more environmental staff resources to reflect the need for broader programs as well as population growth.





A photograph of a dense forest. Tall, slender trees with green foliage form a canopy. Sunlight filters through the leaves, creating dappled light on the forest floor. The ground is covered with a thick layer of green ferns and some fallen branches.

**Please complete a comment form  
here or online.**

**THANK YOU**