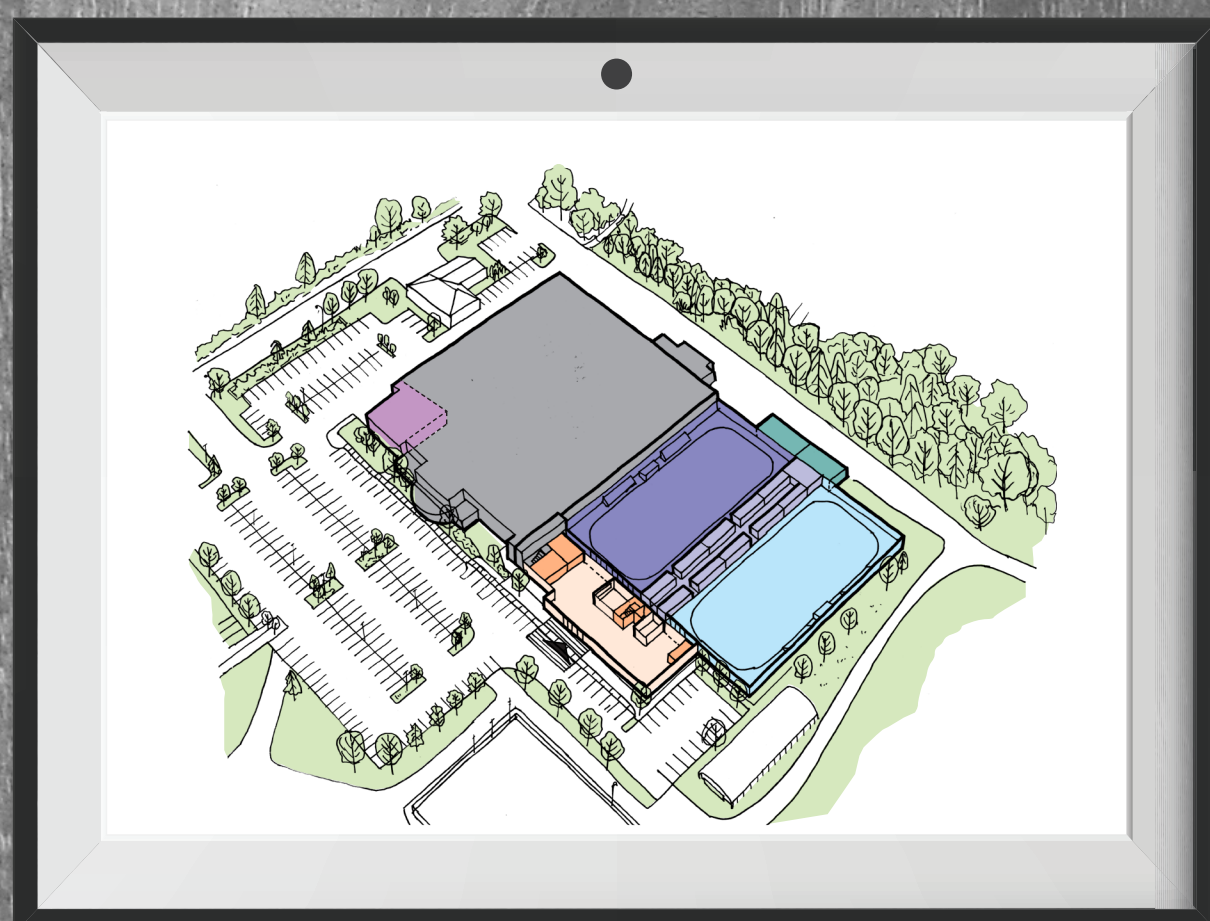
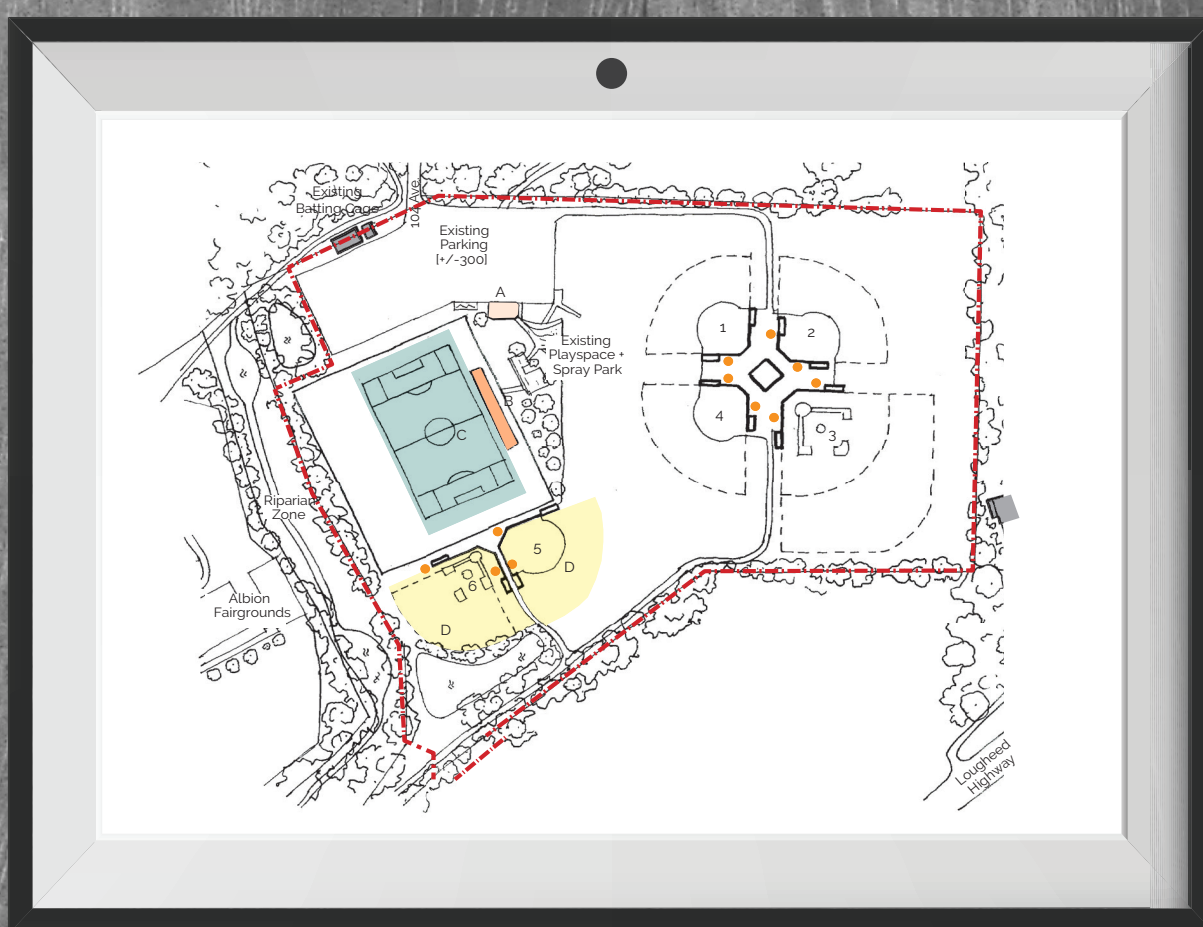


# COMMUNITY FACILITIES CONVERSATION



**HAVE OPINIONS?  
JOIN THE CONVERSATION.**

Use or download a QR Code app on your mobile device and scan this square.



Visit [mapleridge.ca/1676](https://mapleridge.ca/1676) for more information.  
Email us at [facilitytalk@mapleridge.ca](mailto:facilitytalk@mapleridge.ca) with your questions.

# MULTI-USE WELLNESS FACILITY

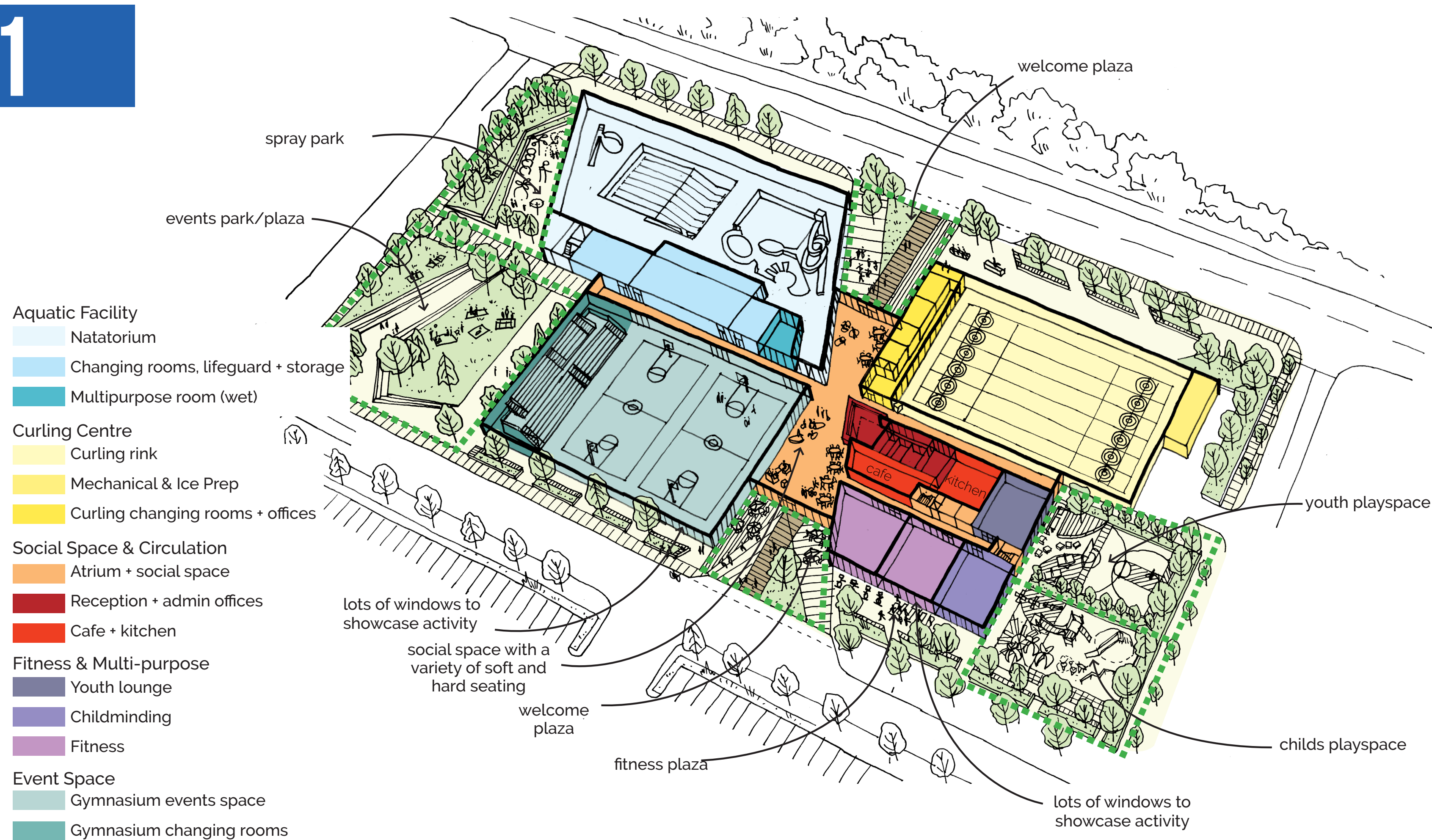
## WITH AN AQUATIC CENTRE & CURLING FACILITY

*"A facility which supports a holistic view of what it means to be healthy and well in Maple Ridge, with active, passive and social activities gathered together under one roof."*

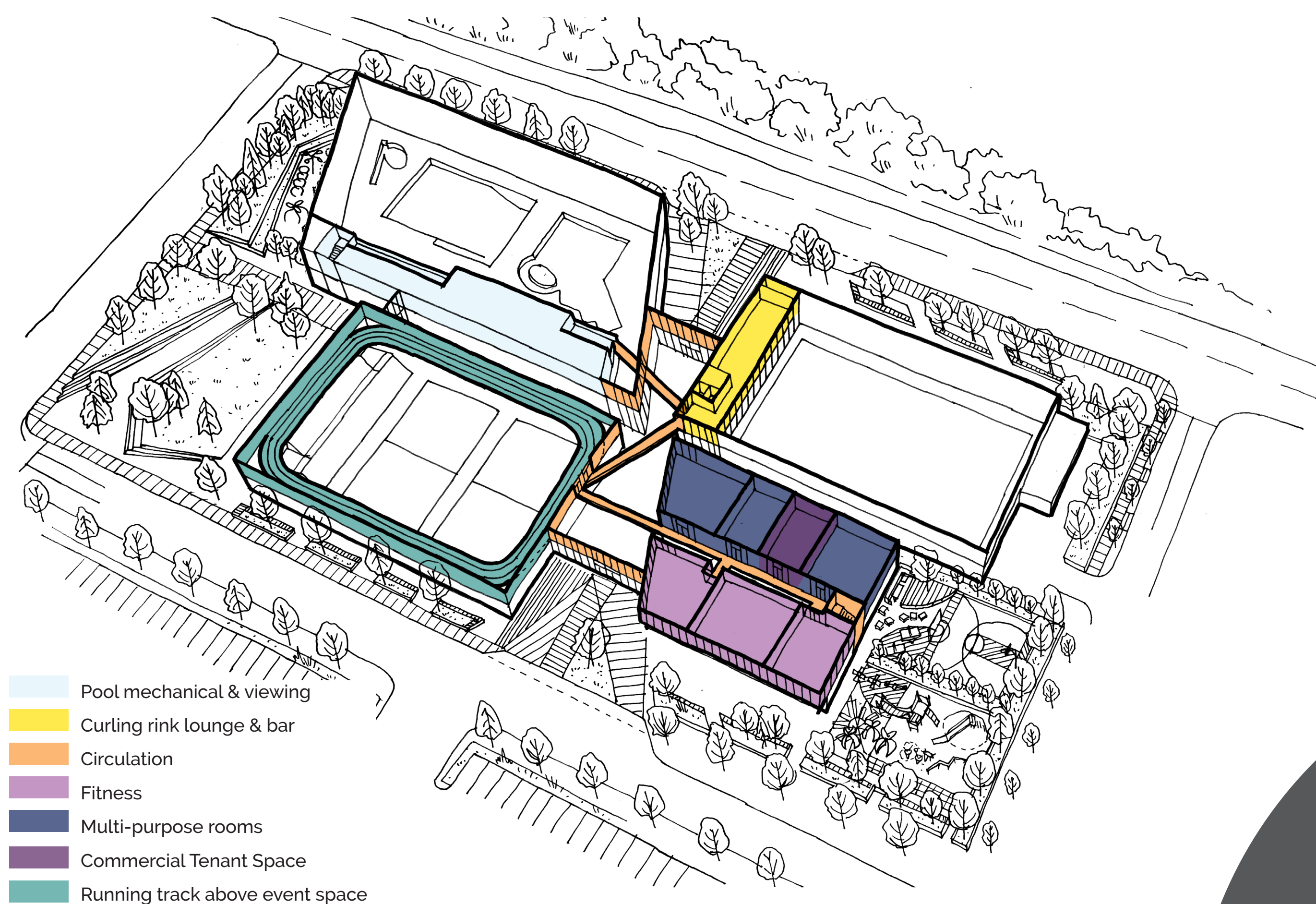
Visit [mapleridge.ca/1676](http://mapleridge.ca/1676) for more information.

Email us at [facilitytalk@mapleridge.ca](mailto:facilitytalk@mapleridge.ca) with your questions.

## LEVEL 1



## LEVEL 2



**HAVE OPINIONS?  
JOIN THE CONVERSATION.**

Use or download a QR Code app on your mobile device and scan this square.



# 1

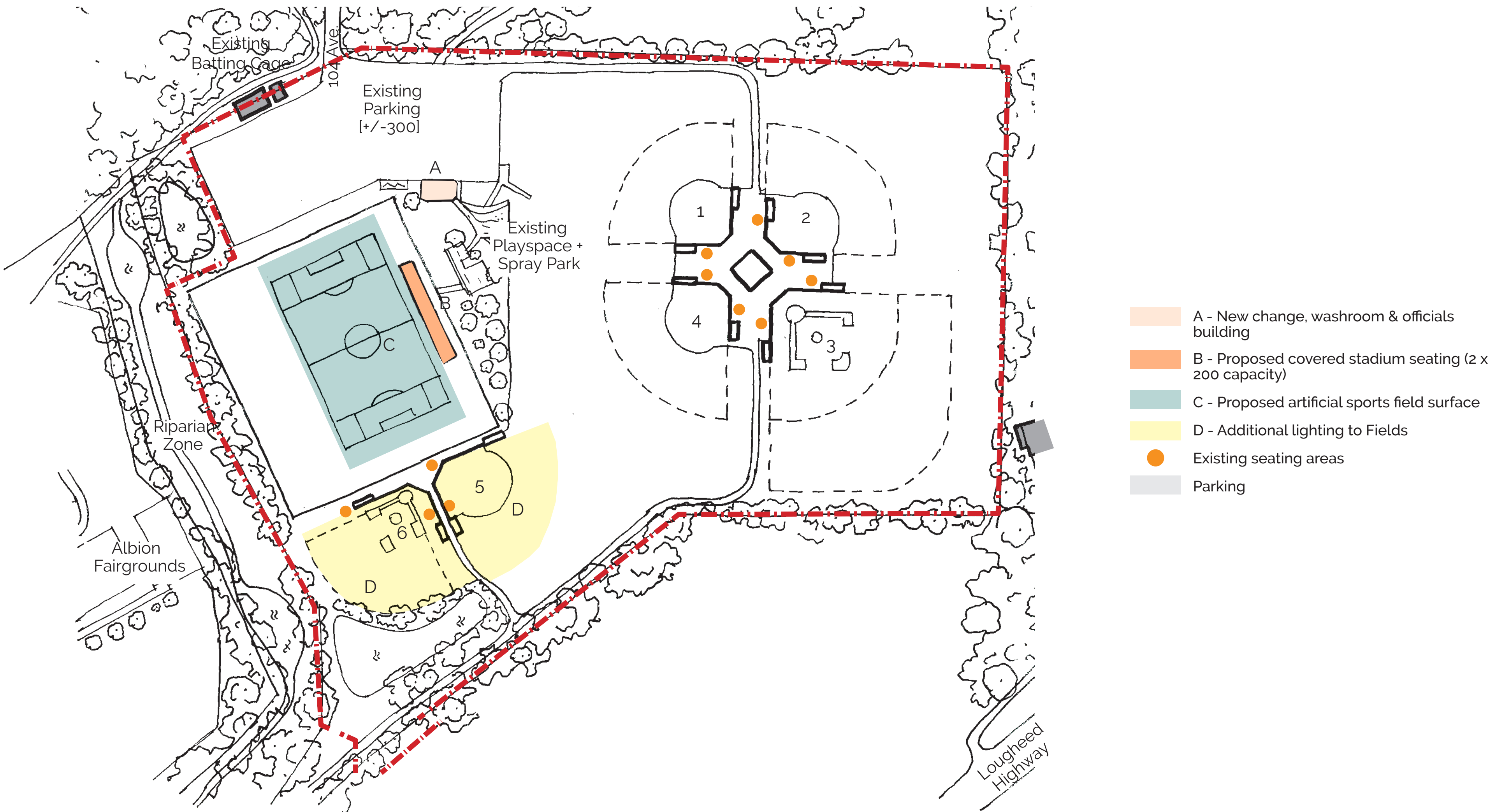
# SYNTHETIC SPORT FIELD & COVERED STADIUM

*"Amenities that will foster the growth and development of competitive and community sport, and allow spectators to rally around, support and engage with sporting events."*

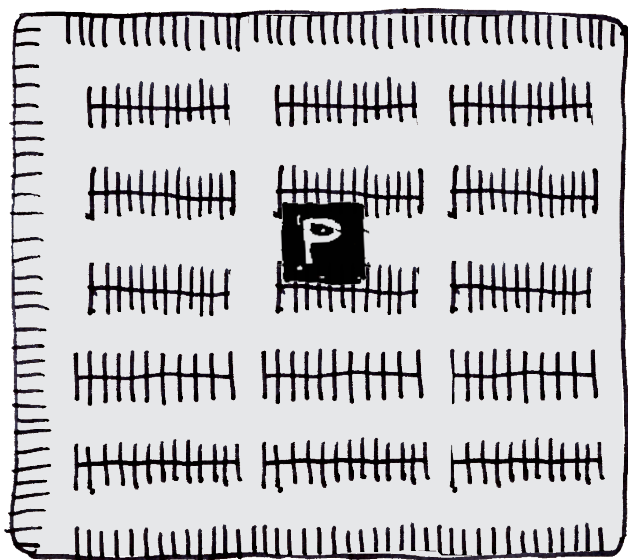
Visit [mapleridge.ca/1676](http://mapleridge.ca/1676) for more information.  
Email us at [facilitytalk@mapleridge.ca](mailto:facilitytalk@mapleridge.ca) with your questions.

- 2A | Albion Sport Field Conversion
- 2B | Maple Ridge Secondary Track Facility Upgrade
- 2C | 5000 Capacity Stadium

## ALBION SPORT FIELD CONVERSION

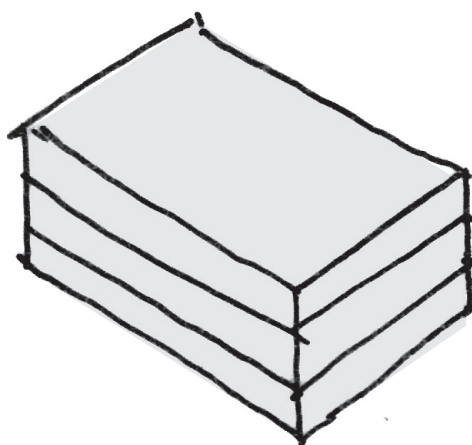


## PARKING OPTIONS



Surface Parking  
+/- 500 stalls (17,500sm/187,500sf)  
for spectator seating (100 stalls) and  
replacement parking from conversion  
of soccer fields to synthetic surface  
(+/-400 stalls)

or



Above grade  
structured parking



**HAVE OPINIONS?**  
**JOIN THE CONVERSATION.**

Use or download a QR Code app on your  
mobile device and scan this square.



# 2A

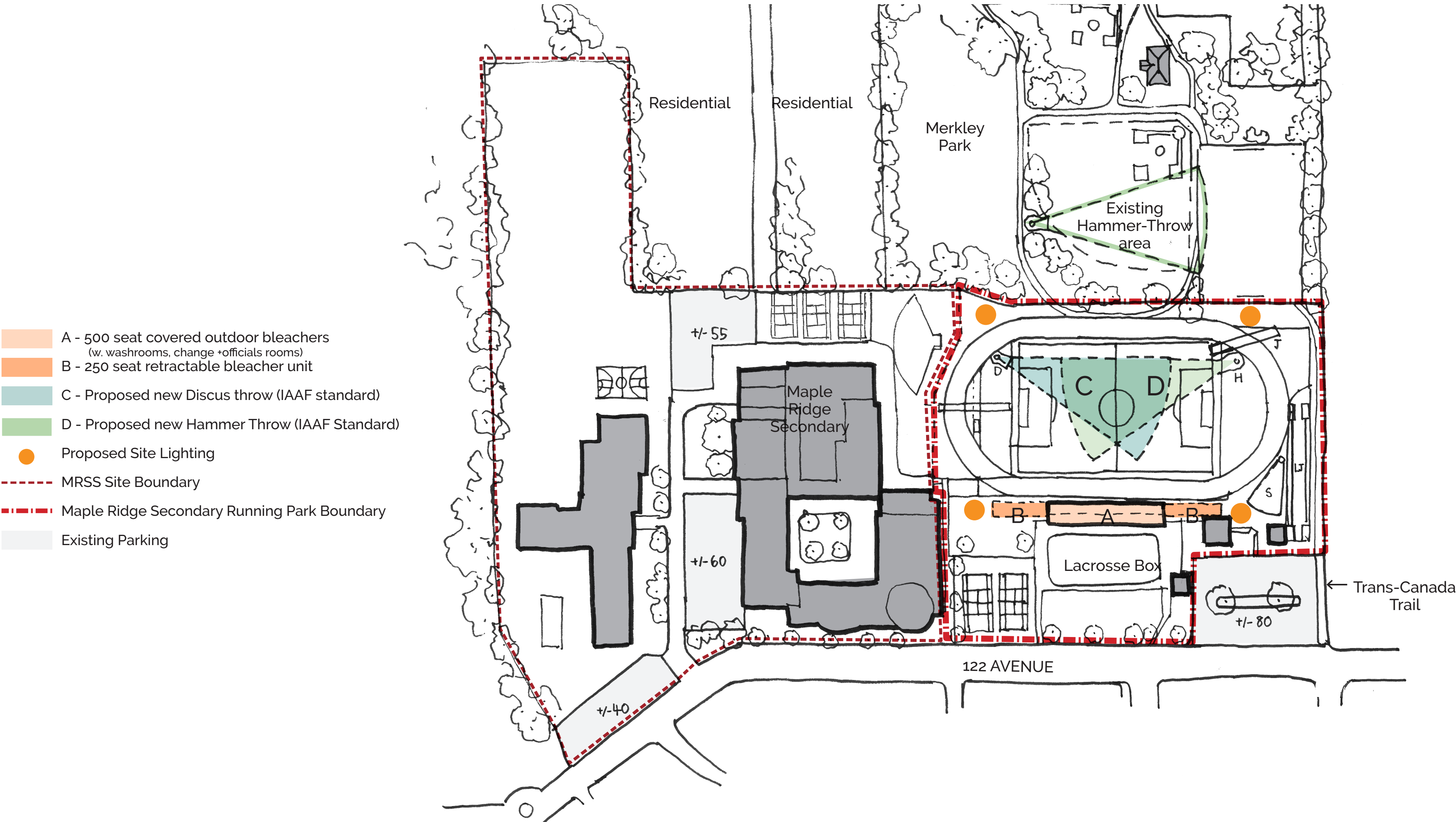
# SYNTHETIC SPORT FIELD & COVERED STADIUM

*“Amenities that will foster the growth and development of competitive and community sport, and allow spectators to rally around, support and engage with sporting events.”*

Visit [mapleridge.ca/1676](http://mapleridge.ca/1676) for more information.  
Email us at [facilitytalk@mapleridge.ca](mailto:facilitytalk@mapleridge.ca) with your questions.

- 2A | Albion Sport Field Conversion
- 2B | Maple Ridge Secondary Track Facility Upgrade
- 2C | 5000 Capacity Stadium

## MAPLE RIDGE SECONDARY TRACK PLANS



Above: Existing Maple Ridge Secondary School



**HAVE OPINIONS?  
JOIN THE CONVERSATION.**  
Use or download a QR Code app on your mobile device and scan this square.



2B

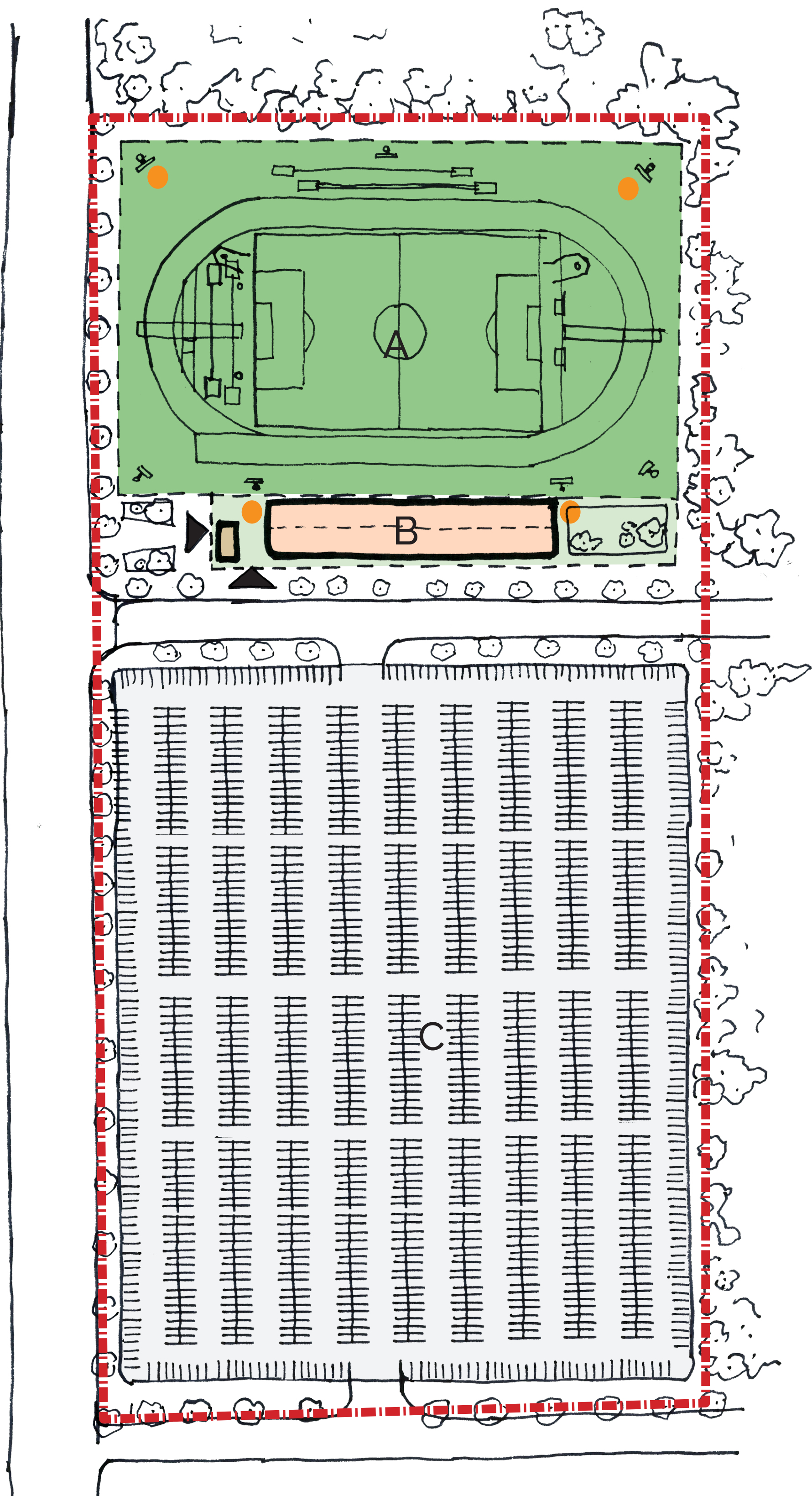
# SYNTHETIC SPORT FIELD & COVERED STADIUM

*“Amenities that will foster the growth and development of competitive and community sport, and allow spectators to rally around, support and engage with sporting events.”*

Visit [mapleridge.ca/1676](http://mapleridge.ca/1676) for more information.  
Email us at [facilitytalk@mapleridge.ca](mailto:facilitytalk@mapleridge.ca) with your questions.

- 2A | Albion Sport Field Conversion
- 2B | Maple Ridge Secondary Track Facility Upgrade
- 2C | 5000 Capacity Stadium

## 5000 CAPACITY STADIUM



- A - Sports Field Area
- B - 5000 Capacity stadium fixed, covered seating  
(w. washrooms, change + officials rooms, offices + concession beneath)
- C - Required Parking Area
- Site Landscaping
- Proposed Site Lighting



Above: Precedent images of IAFF standard Athletic and Sports Field Facilities & Stadium



**HAVE OPINIONS?  
JOIN THE CONVERSATION.**  
Use or download a QR Code app on your mobile device and scan this square.

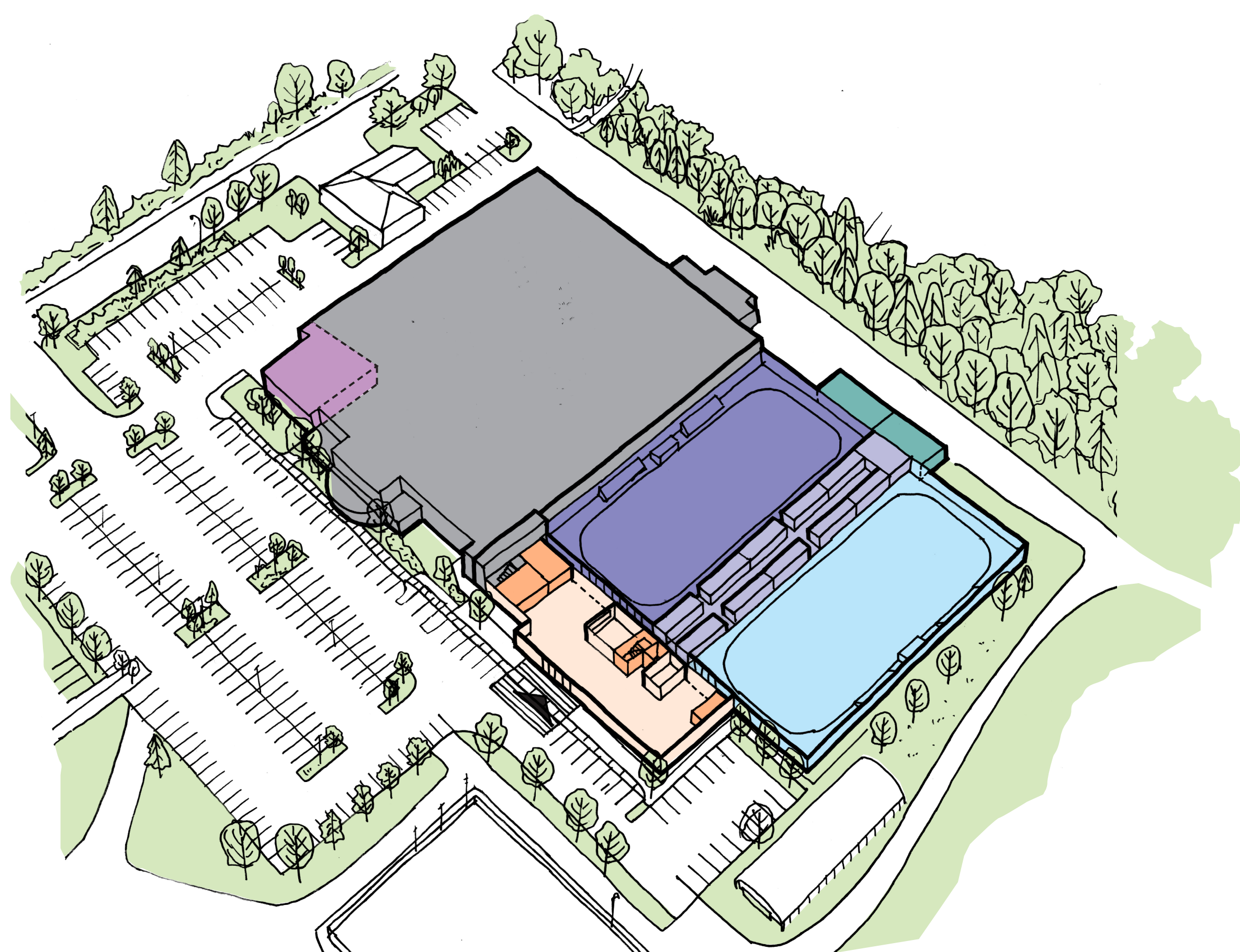


# ICE FACILITIES EXPANSION

*"An expansion which supports the growing aspirations of ice sports in Maple Ridge, and allows users of all abilities to enjoy the benefits of arena sports."*

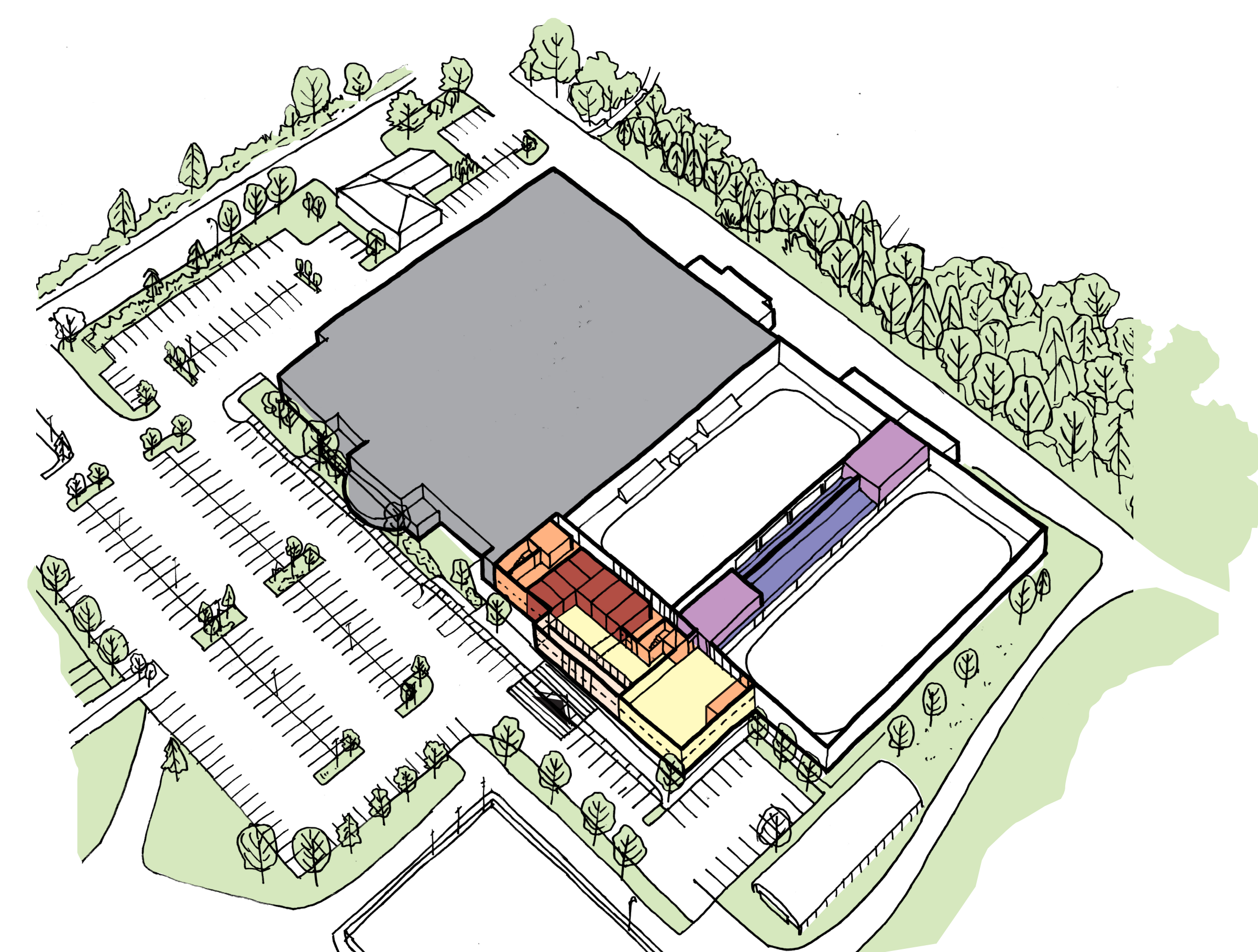
Visit [mapleridge.ca/1676](http://mapleridge.ca/1676) for more information.  
Email us at [facilitytalk@mapleridge.ca](mailto:facilitytalk@mapleridge.ca) with your questions.

## LEVEL 1



- Renovate existing offices
- Retrofit NHL ice rink (curling club)
- New NHL ice rink
- New change rooms
- Retrofit + extend mechanical + ice-resurfacing room
- New entry, lobby, reception + skaters lounge
- Washrooms + circulation

## LEVEL 2



- Mezzanine viewing area
- Multiuse space for off-ice training
- Washrooms + circulation
- Double height entry space open to below
- New offices
- New Multi-purpose rooms



**HAVE OPINIONS?  
JOIN THE CONVERSATION.**

Use or download a QR Code app on your mobile device and scan this square.



# 3

# NEIGHBOURHOOD AMENITIES

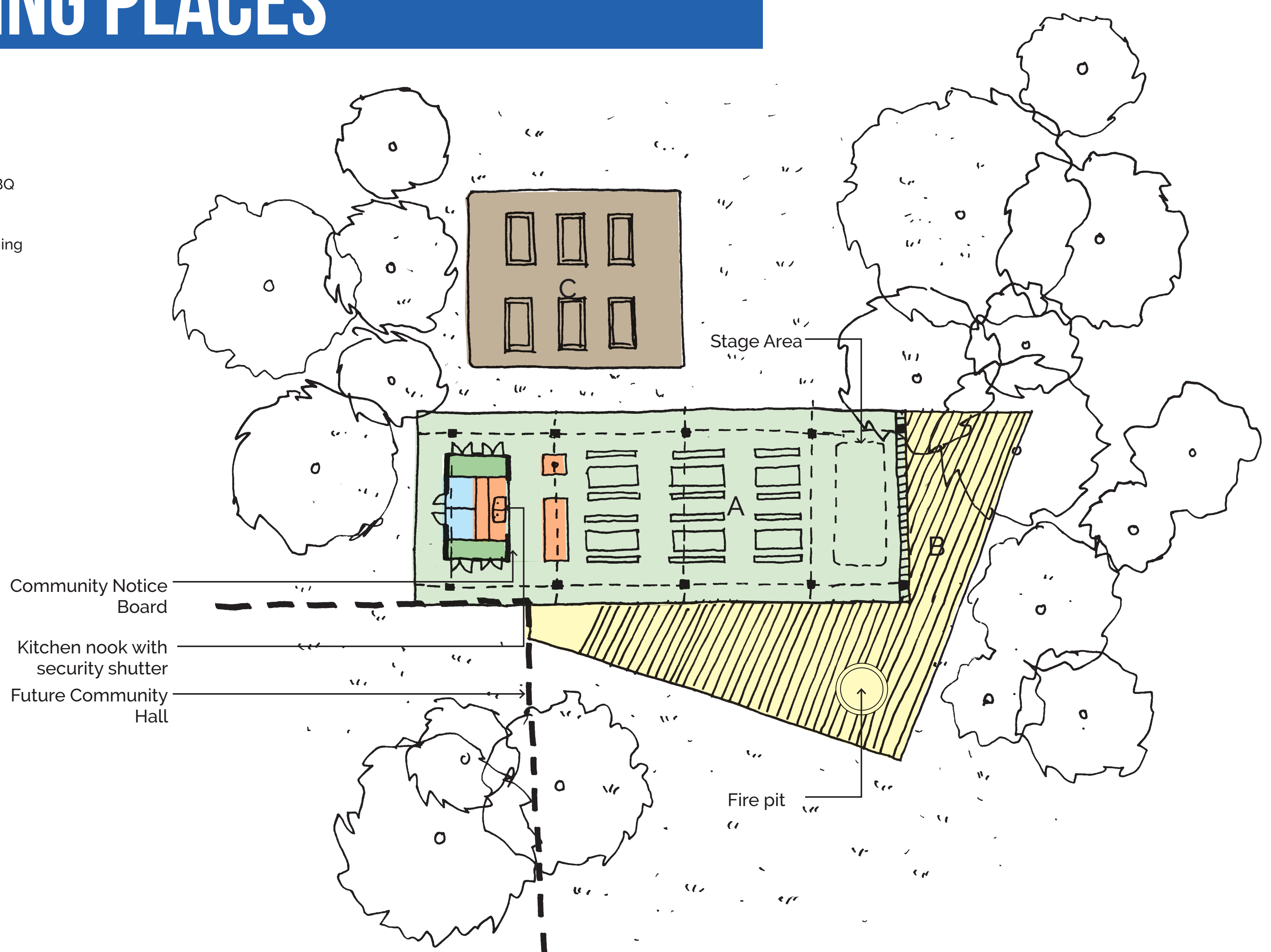
*"A series of amenities that support the fine grained daily life of smaller communities in the area and allow them to gather, recreate, celebrate and connect to their natural surroundings."*

Visit [mapleridge.ca/1676](http://mapleridge.ca/1676) for more information.  
Email us at [facilitytalk@mapleridge.ca](mailto:facilitytalk@mapleridge.ca) with your questions.

- 4A | Silver Valley Neighbourhood Gathering Places
- 4B | Hammond Community Centre Improvements
- 4C | Ridge Canoe & Kayak Improvements
- 4D | Albion Neighbourhood Learning & Community Centre

## SILVER VALLEY NEIGHBOURHOOD GATHERING PLACES

- A - Pavilion Dining Area
- B - Patio Terrace
- C - Community Garden
- Community Kitchen + BBQ
- Washroom
- Storage for Garden + Dining



**HAVE OPINIONS?**  
**JOIN THE CONVERSATION.**

Use or download a QR Code app on your mobile device and scan this square.



# 4A

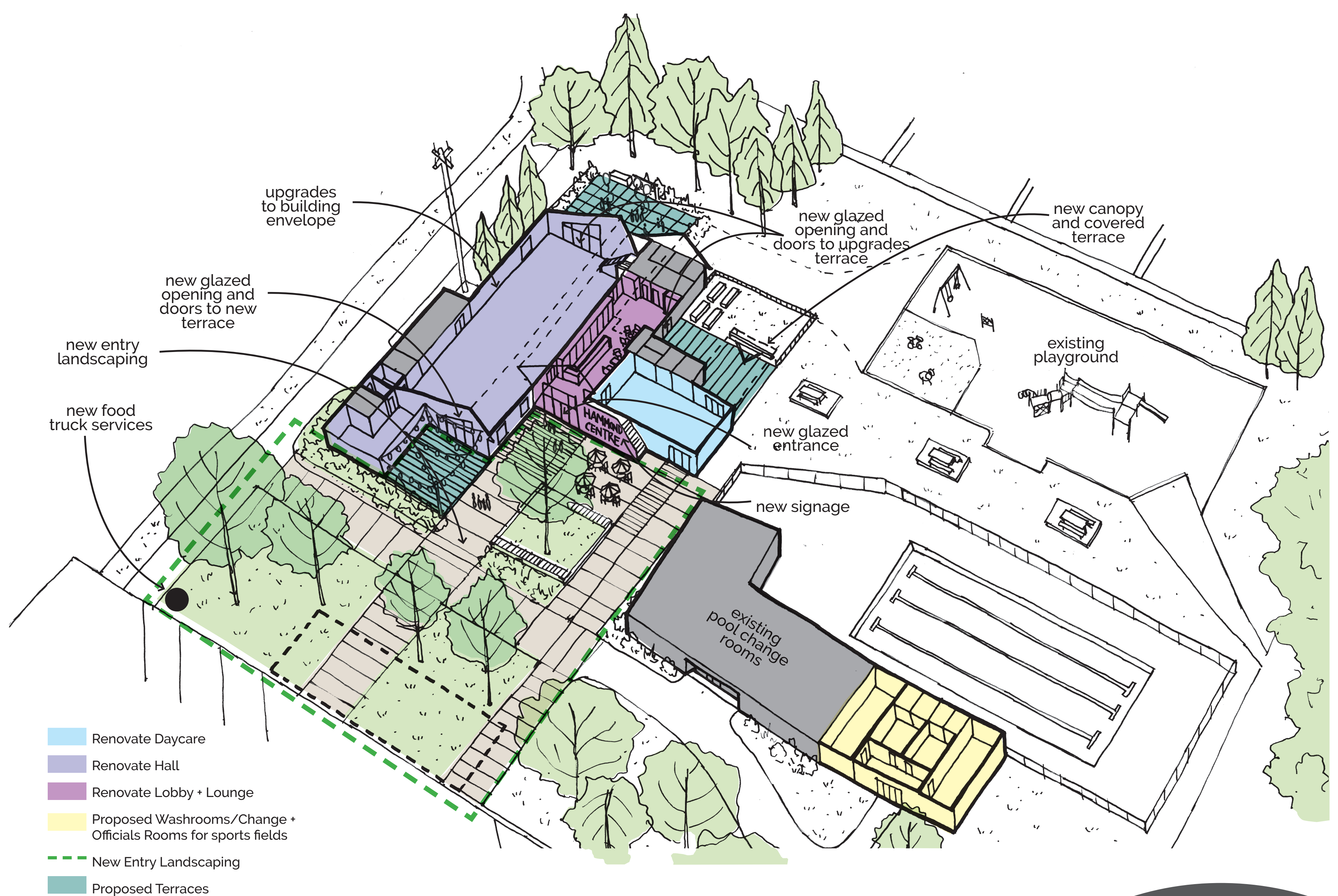
# NEIGHBOURHOOD AMENITIES

*"A series of amenities that support the fine grained daily life of smaller communities in the area and allow them to gather, recreate, celebrate and connect to their natural surroundings."*

Visit [mapleridge.ca/1676](http://mapleridge.ca/1676) for more information.  
Email us at [facilitytalk@mapleridge.ca](mailto:facilitytalk@mapleridge.ca) with your questions.

- 4A | Silver Valley Neighbourhood Gathering Places
- 4B | Hammond Community Centre Improvements
- 4C | Ridge Canoe & Kayak Improvements
- 4D | Albion Neighbourhood Learning & Community Centre

## HAMMOND COMMUNITY CENTRE IMPROVEMENTS



**HAVE OPINIONS?  
JOIN THE CONVERSATION.**

Use or download a QR Code app on your mobile device and scan this square.



# 4B

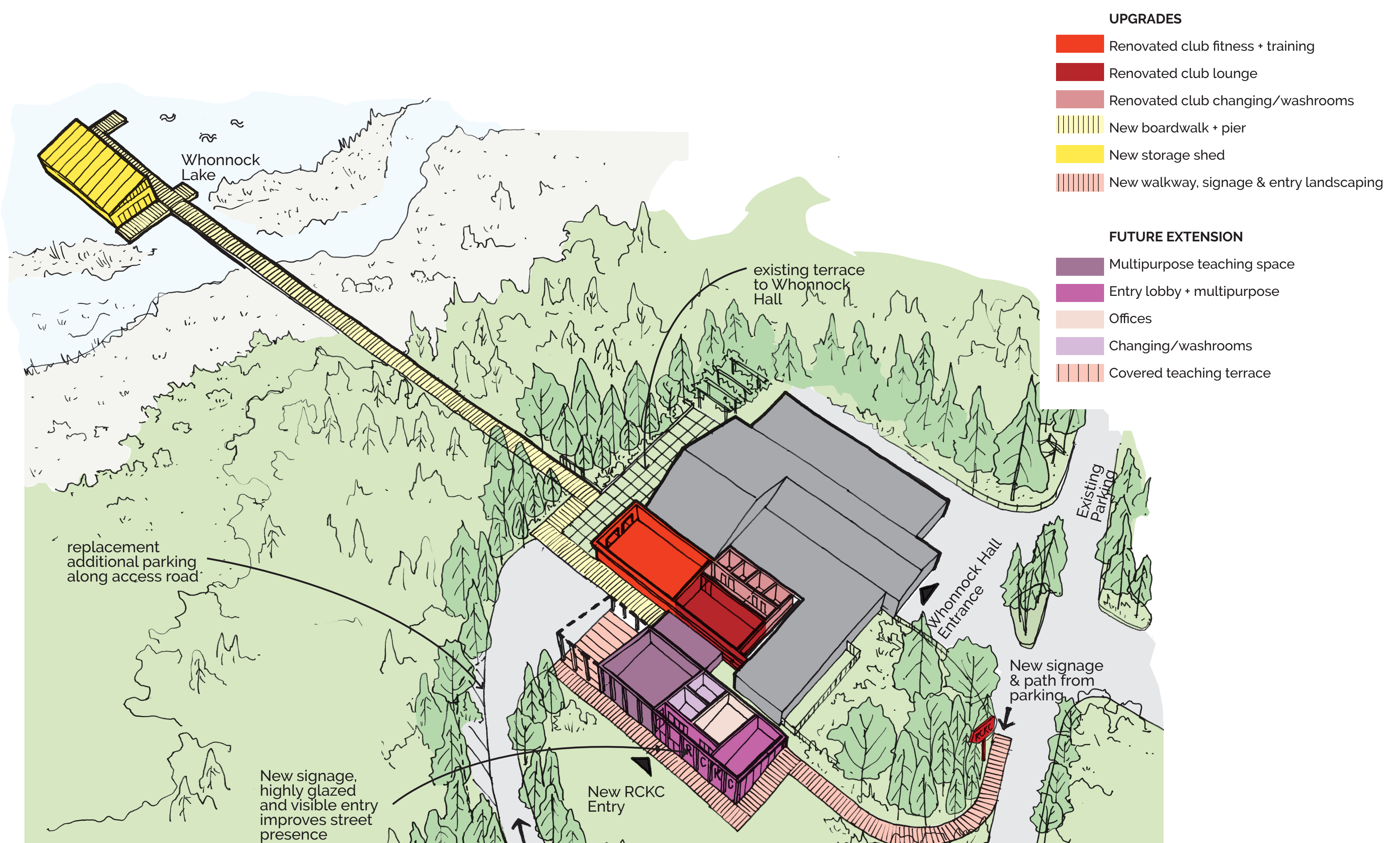
# NEIGHBOURHOOD AMENITIES

*"A series of amenities that support the fine grained daily life of smaller communities in the area and allow them to gather, recreate, celebrate and connect to their natural surroundings."*

Visit [mapleridge.ca/1676](http://mapleridge.ca/1676) for more information.  
Email us at [facilitytalk@mapleridge.ca](mailto:facilitytalk@mapleridge.ca) with your questions.

- 4A | Silver Valley Neighbourhood Gathering Places
- 4B | Hammond Community Centre Improvements
- 4C | Ridge Canoe & Kayak Improvements
- 4D | Albion Neighbourhood Learning & Community Centre

## RIDGE CANOE & KAYAK IMPROVEMENTS



**HAVE OPINIONS?  
JOIN THE CONVERSATION.**

Use or download a QR Code app on your mobile device and scan this square.



# 4C

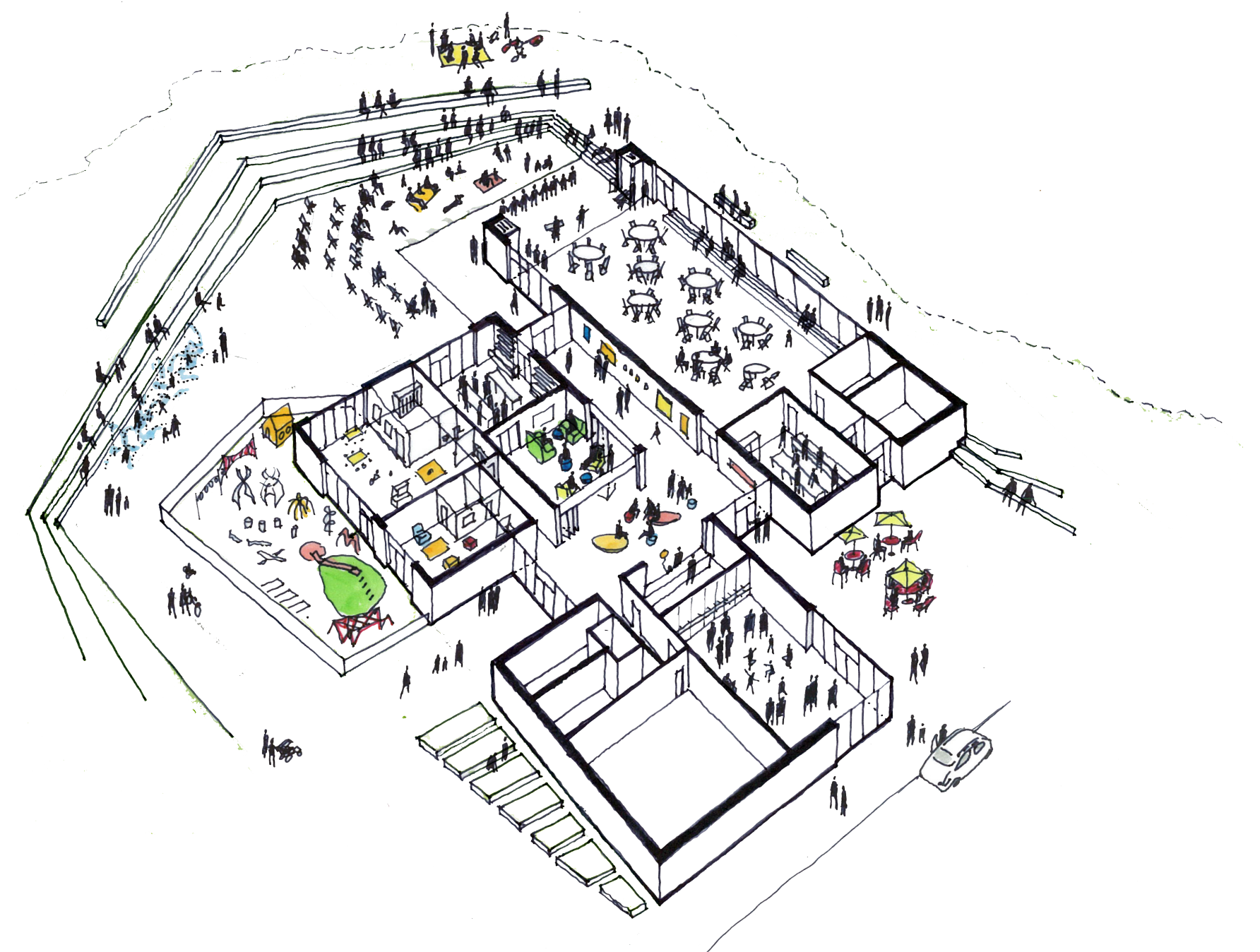
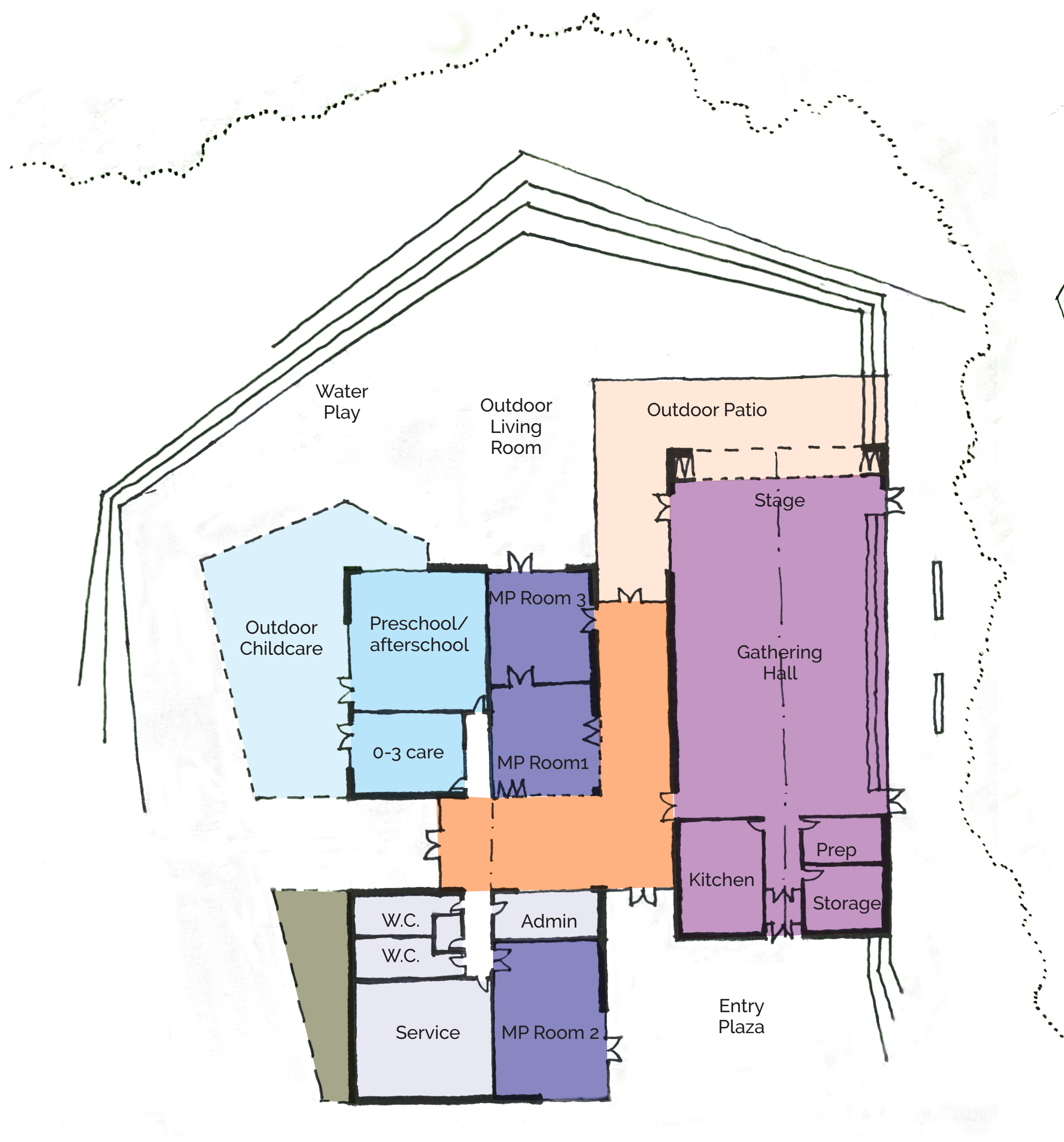
# NEIGHBOURHOOD AMENITIES

*"A series of amenities that support the fine grained daily life of smaller communities in the area and allow them to gather, recreate, celebrate and connect to their natural surroundings."*

Visit [mapleridge.ca/1676](http://mapleridge.ca/1676) for more information.  
Email us at [facilitytalk@mapleridge.ca](mailto:facilitytalk@mapleridge.ca) with your questions.

- 4A | Silver Valley Neighbourhood Gathering Places
- 4B | Hammond Community Centre Improvements
- 4C | Ridge Canoe & Kayak Improvements
- 4D | Albion Neighbourhood Learning & Community Centre

## ALBION NEIGHBOURHOOD LEARNING & COMMUNITY CENTRE



Above: 3D Site View

- Gathering Hall
- Multipurpose Rooms
- Childcare Facilities
- Lobby
- Support Spaces
- Entry Plaza
- Outdoor Patio
- Child Play Area
- Community garden



**HAVE OPINIONS?  
JOIN THE CONVERSATION.**

Use or download a QR Code app on your mobile device and scan this square.



# 4D

# CIVIC & CULTURAL FACILITY

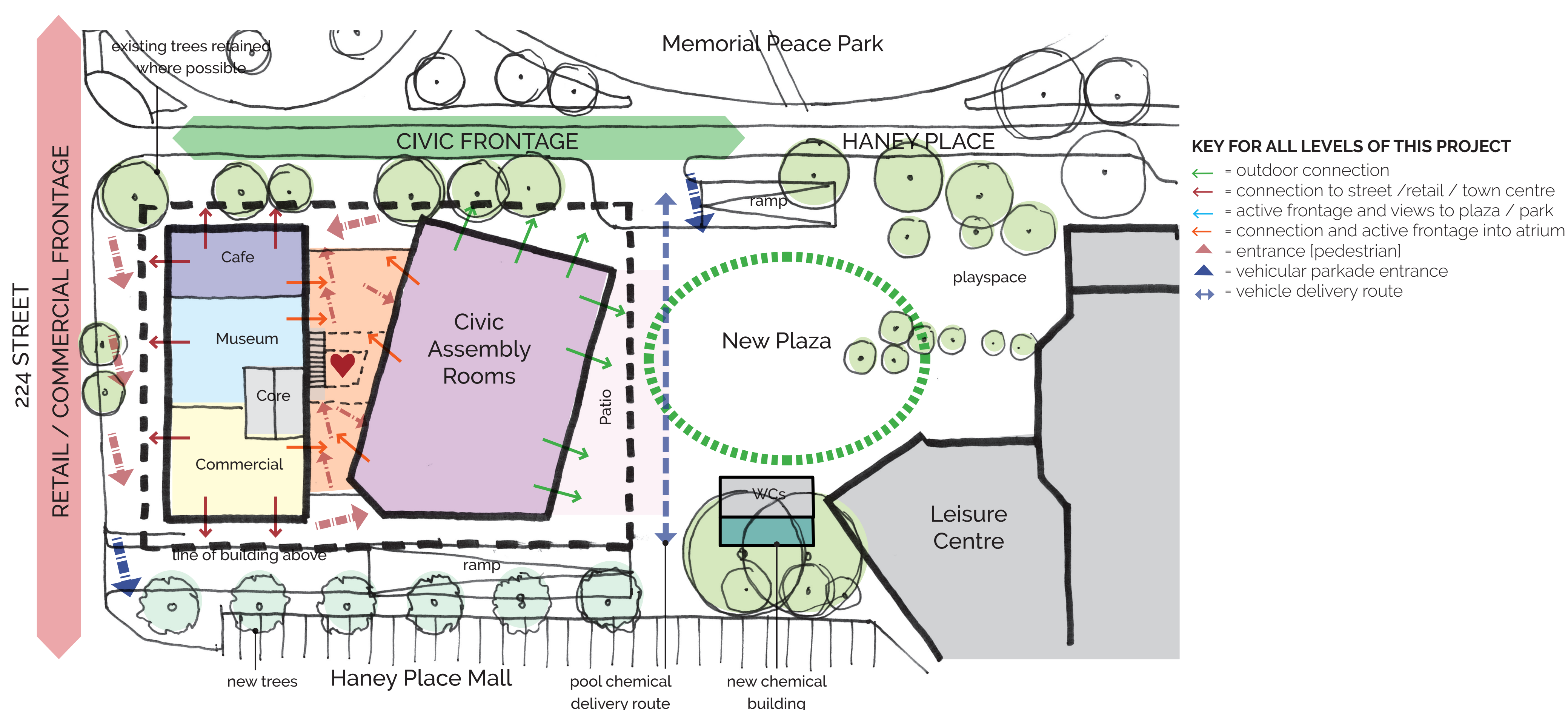
INCLUDING A MUSEUM, ARCHIVES & POST-SECONDARY EDUCATION SPACE

*"A building which completes the civic precinct, allows the community to gather, allows for higher education opportunities and offers a home for a museum in the heart of the city."*

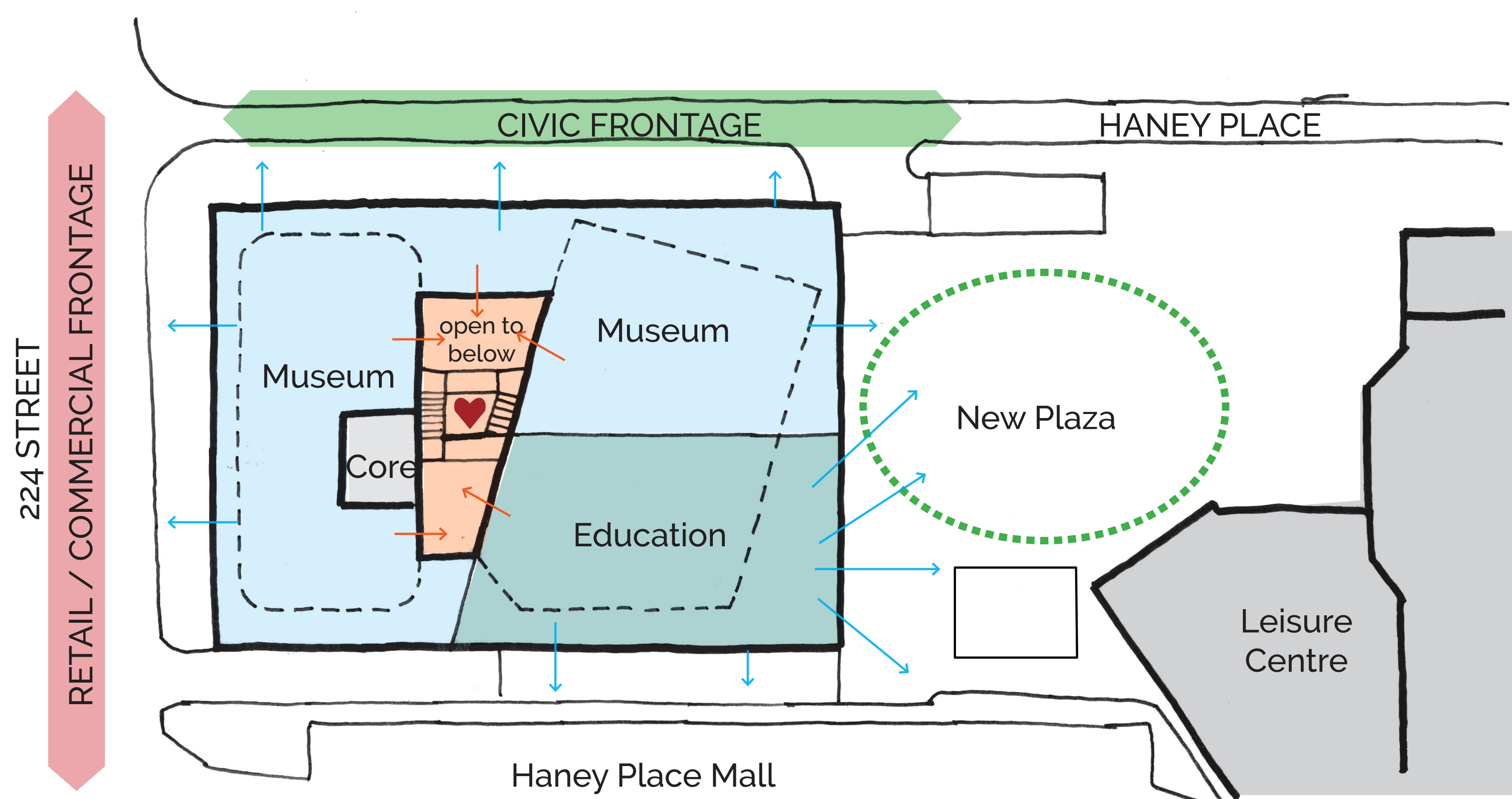
Visit [mapleridge.ca/1676](http://mapleridge.ca/1676) for more information.

Email us at [facilitytalk@mapleridge.ca](mailto:facilitytalk@mapleridge.ca) with your questions.

## LEVEL 1



## LEVEL 2



**HAVE OPINIONS?  
JOIN THE CONVERSATION.**

Use or download a QR Code app on your mobile device and scan this square.



5

# CIVIC & CULTURAL FACILITY

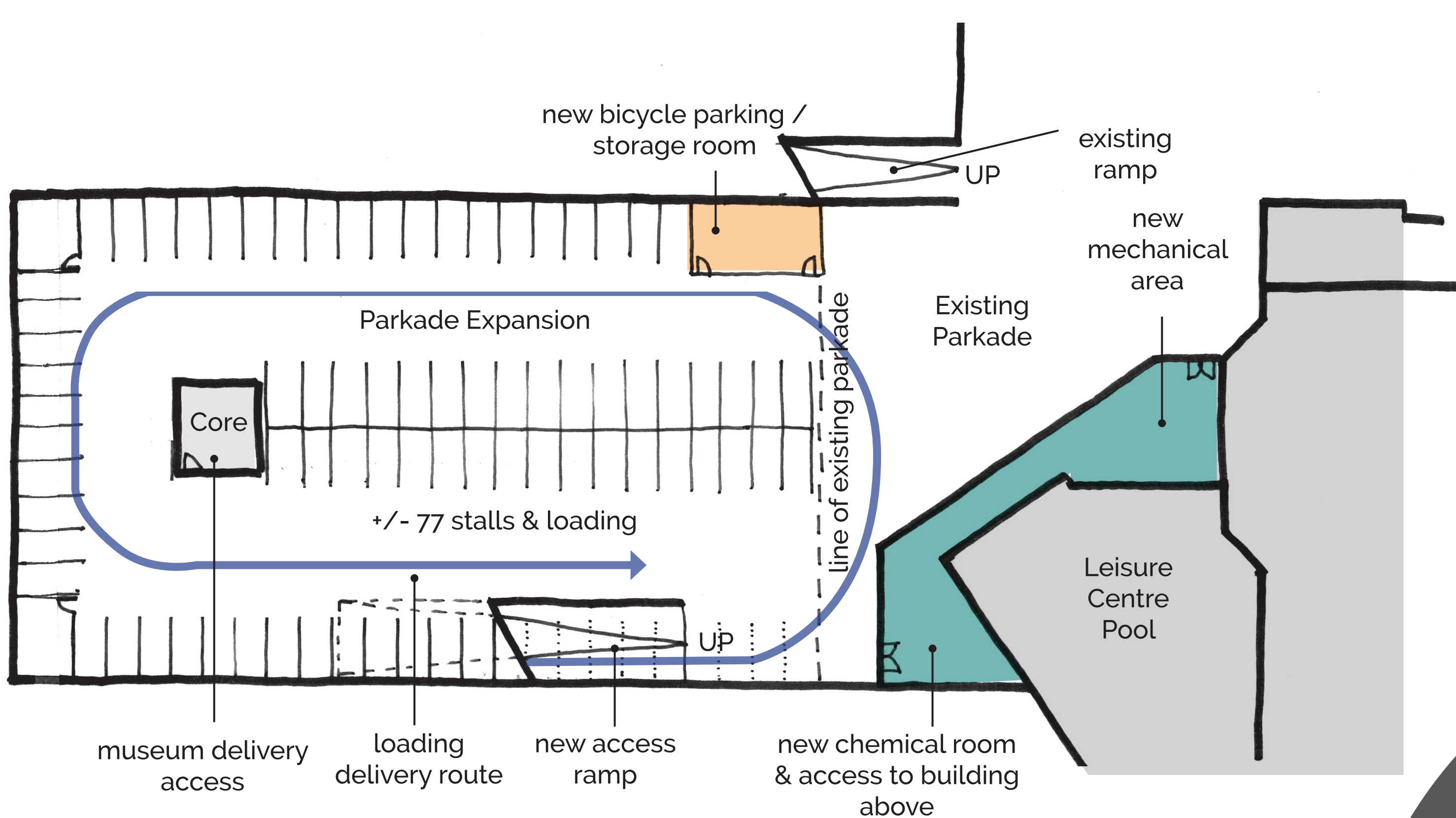
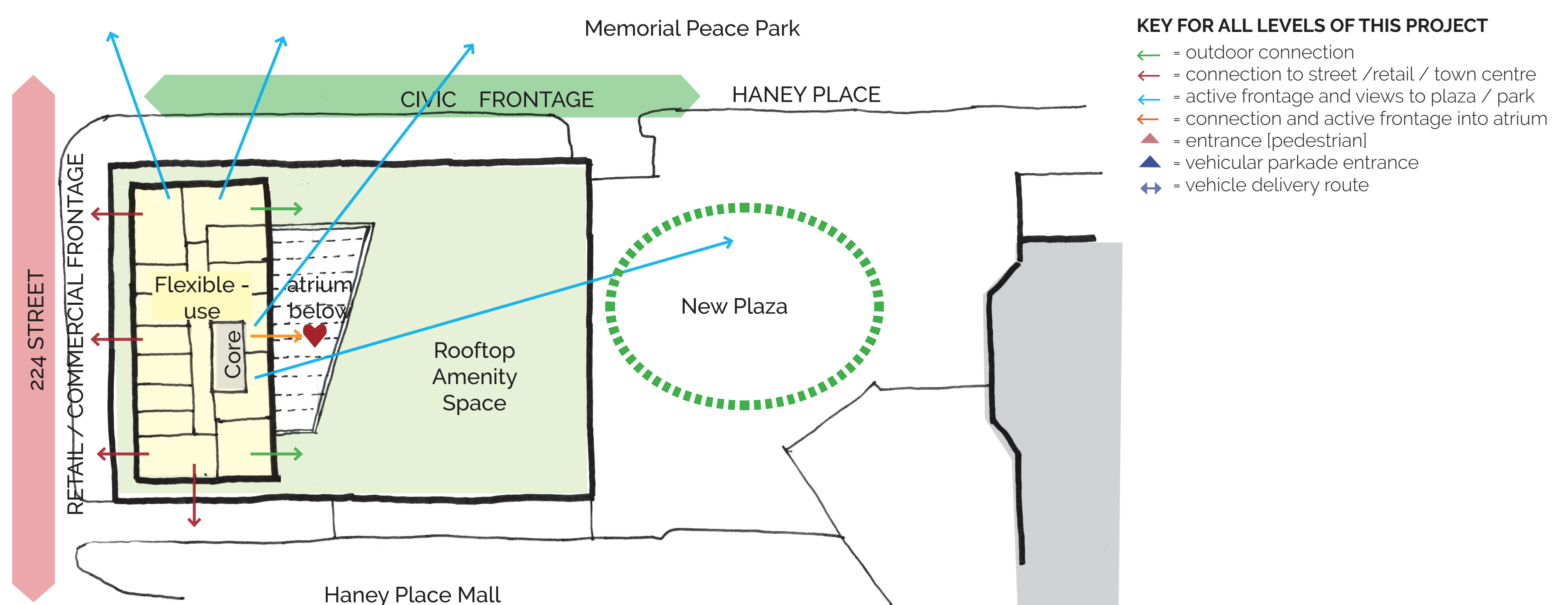
INCLUDING A MUSEUM, ARCHIVES & POST-SECONDARY EDUCATION SPACE

*"A building which completes the civic precinct, allows the community to gather, allows for higher education opportunities and offers a home for a museum in the heart of the city."*

Visit [mapleridge.ca/1676](http://mapleridge.ca/1676) for more information.

Email us at [facilitytalk@mapleridge.ca](mailto:facilitytalk@mapleridge.ca) with your questions.

## LEVEL 3-6



## PARKADE



**HAVE OPINIONS?  
JOIN THE CONVERSATION.**

Use or download a QR Code app on your mobile device and scan this square.



# 5