



Regional Context Statement

Official Community Plan Amending Bylaw
No. 7002 – 2013

Public Hearing Nov. 19, 2013



Legislative Requirements



Local Government Act

- Section 866 requires municipalities to include a Regional Context Statement in their Official Community Plan.

Regional Context Statement Timeline

- Municipalities must have submitted their Regional Context Statements for Acceptance by the Metro Vancouver Board by July 29, 2013. The Maple Ridge RCS was submitted to Metro Vancouver on July 25, 2013.



Regional Context Statement



- Where a regional plan is in effect, a municipality must include a Regional Context Statement (RCS) in the Official Community Plan (OCP) that identifies the relationship between the regional plan and the OCP.
- Where the OCP does not align or include policies related to the regional plan, the RCS must identify how the OCP will be made consistent with the regional plan over time. These are commonly referred to as “work toward” statements.
- The content of the RCS is administrative in nature – it is a record of how the OCP policies align with the regional plan policies and does not introduce new policies into the OCP or the Regional Growth Strategy.



RGS Background



- During the preparation of the RGS, Council and staff worked closely with the Region on the content of the Strategy.
- From Feb. 2009 to Oct. 2010, the draft RGS was discussed approximately 12 times with Council, including 3 presentations from Metro Vancouver's CAO and staff.
- Approximately 30 concerns were identified by Council that were addressed and incorporated into the final RGS.



Council Resolutions



October 15, 2012

- RCS amendment process endorsed

March 18, 2013

- Draft RCS received for information
- Section 879 Resolution and Consultation program

June 17, 2013

- Staff directed to prepare an OCP amending bylaw for the RCS and bring forward to the next available Regular Council meeting.

July 23, 2013

- 1st Reading of OCP Amending Bylaw No. 7002-2013 and referral to Metro Vancouver Board for acceptance



RCS – Consultation



- March 18, 2013 Council Resolution directed that consultation on the draft RCS be an online questionnaire and early posting of the proposed OCP Amending Bylaw on the District website.
- The online questionnaire was posted from June 18 to July 12, 2013. No comments were received.

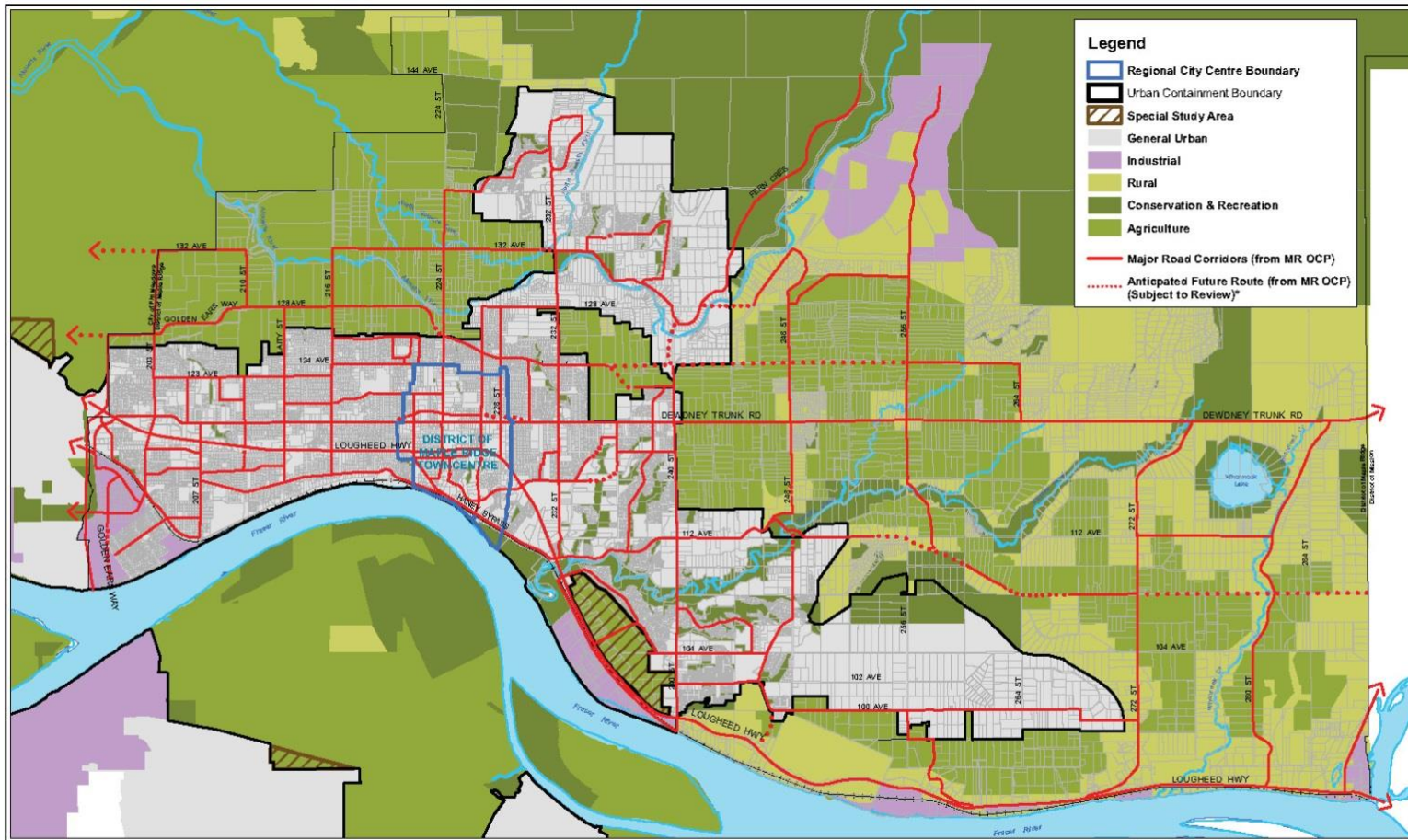


RCS – ALC Comments



- The RCS was also forwarded to the ALC for comment on June 25, 2013, as required by Section 882 (3) of the Local Government Act.
- On October 30, 2013 comments were received from the ALC indicating that they had *“reviewed the Regional Context Statement and found there was no conflict with the Commission’s mandate.”*
- *“The Commission’s only comment relates to the arrows on the RGS map pointing west into Pitt Meadows from 132 Avenue and Golden Ears Way. At this time the Commission does not object to these arrows, as they convey two realistic alternatives.”*





Scale: 1:22,500

Maple Ridge Regional Context Statement - Regional Land Use Designations



Maple Ridge Regional Context Statement
CORPORATION OF THE DISTRICT OF MAPLE RIDGE
1115, 1116 & 1117
1115, 1116 & 1117
1115, 1116 & 1117



OCP Amending Bylaw Timeline



The Metro Vancouver Regional Board **Accepted** the Maple Ridge Regional Context Statement on **September 27, 2013**.

Tentative Bylaw timeline*:

- 3rd Reading & Final Approval Nov. 26, 2013

*Subject to Council approval.

