



# Preserving Biodiversity within our urban areas during a time of rapid development

Michael Coulthard  
RPF RPBio  
Diamond Head Consulting Ltd.







*Biodiversity is the variety of species and ecosystems on earth and the ecological processes of which they are a part – including natural ecosystems, living species and other components that provide genetic diversity*















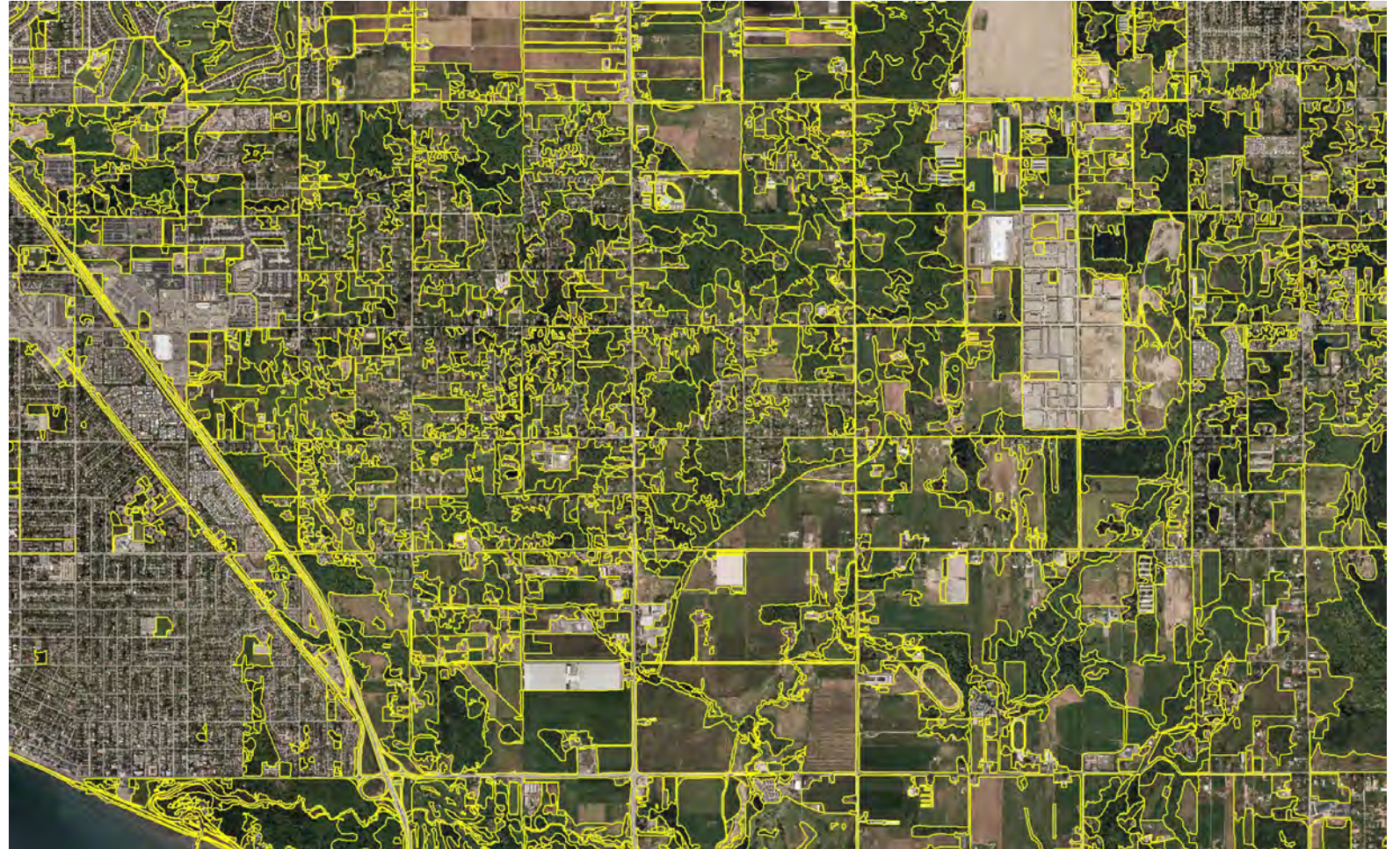
- **Biodiversity is disappearing:** Estimated that species are disappearing at 50-100 times the natural rate as a direct result of human activities (MetroVan, 2006).
- **Surrey is a rapidly developing city:** A certain portion of future build-out is already in motion (e.g., approved neighbourhood concept plans)
- **Limited resources for conservation:** The City has greatest control over publicly-owned land. It has some influence on private lands through regulatory tools (zoning), incentives and education.

*The Challenge - How to maximize biodiversity within this context?*



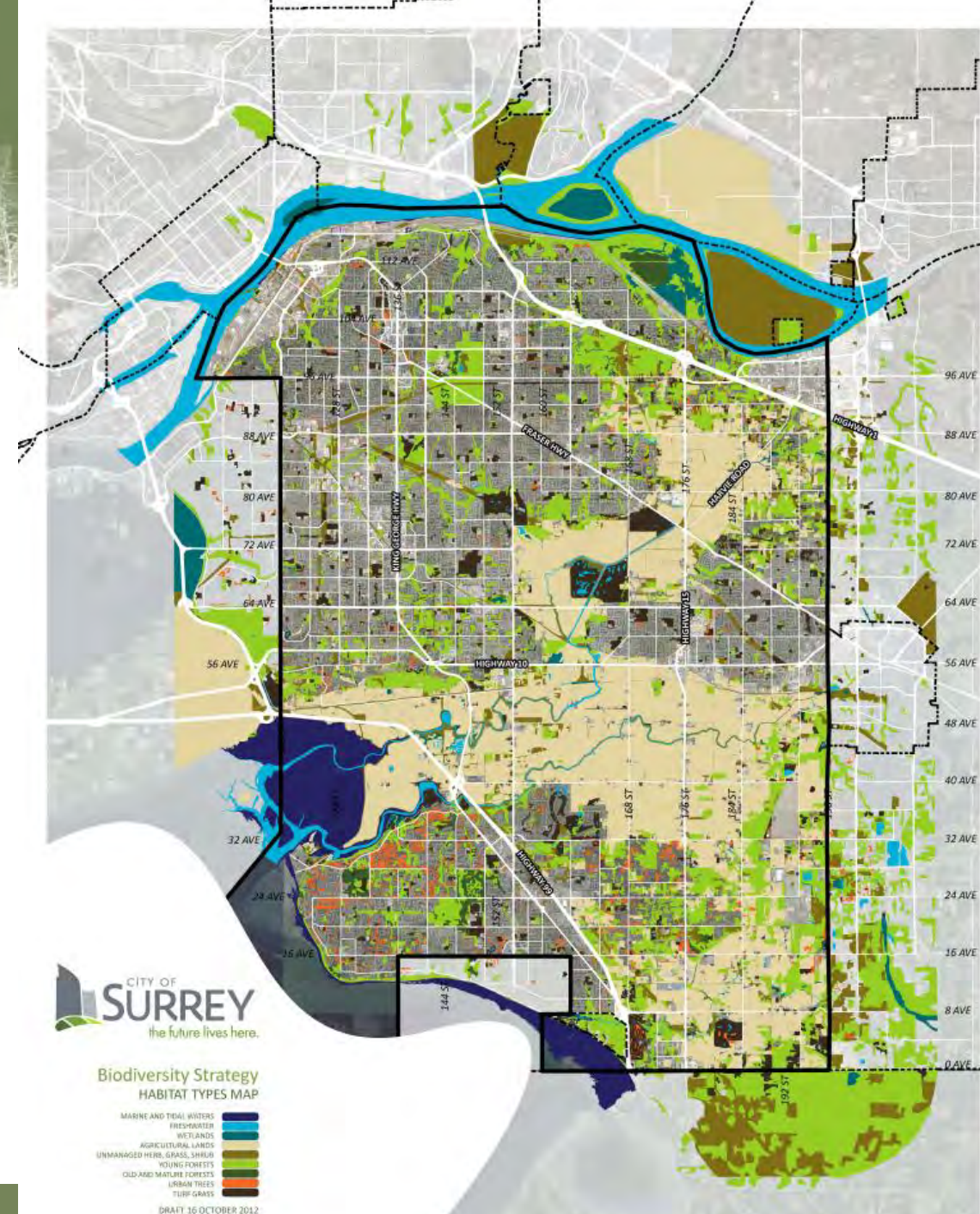
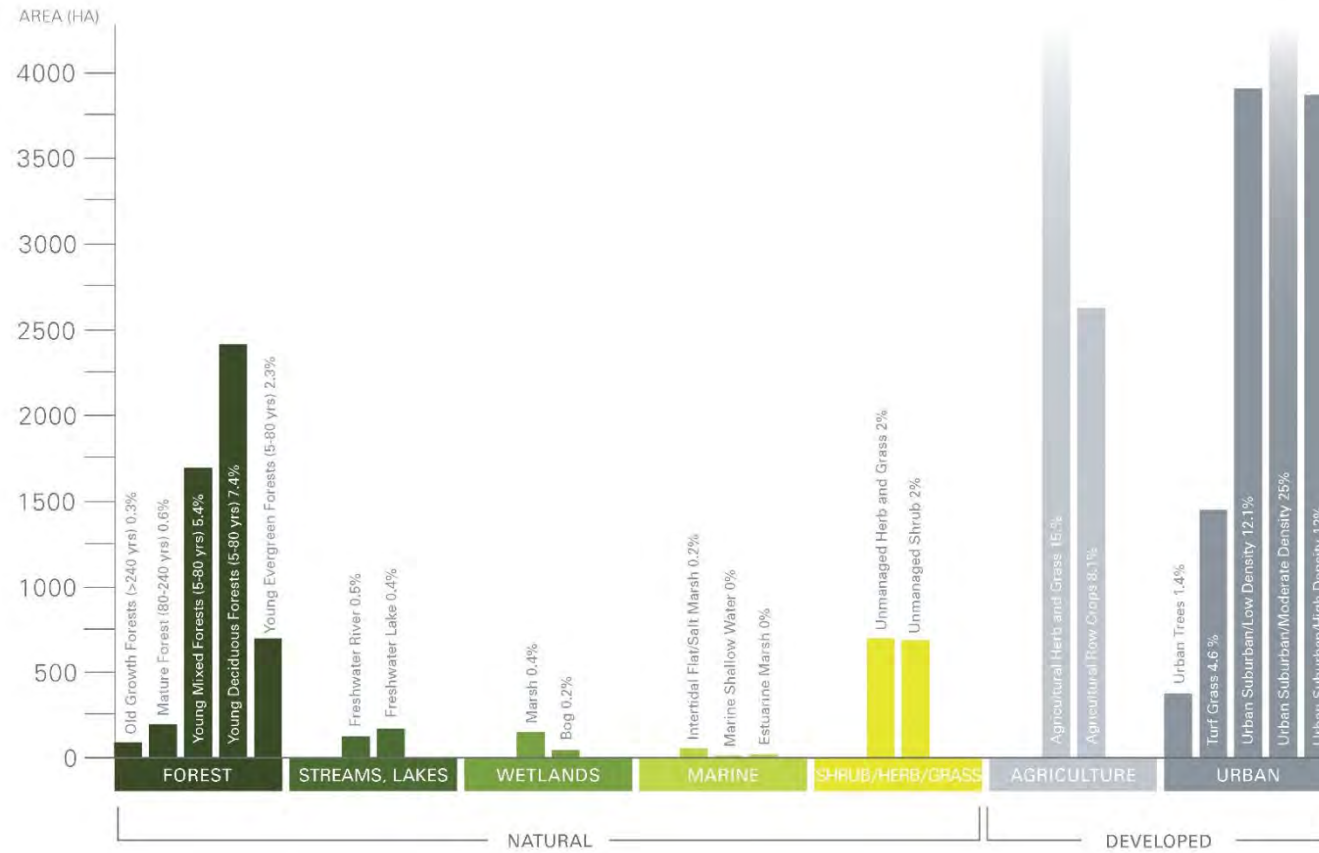


# Habitat Typing





# Habitat Typing

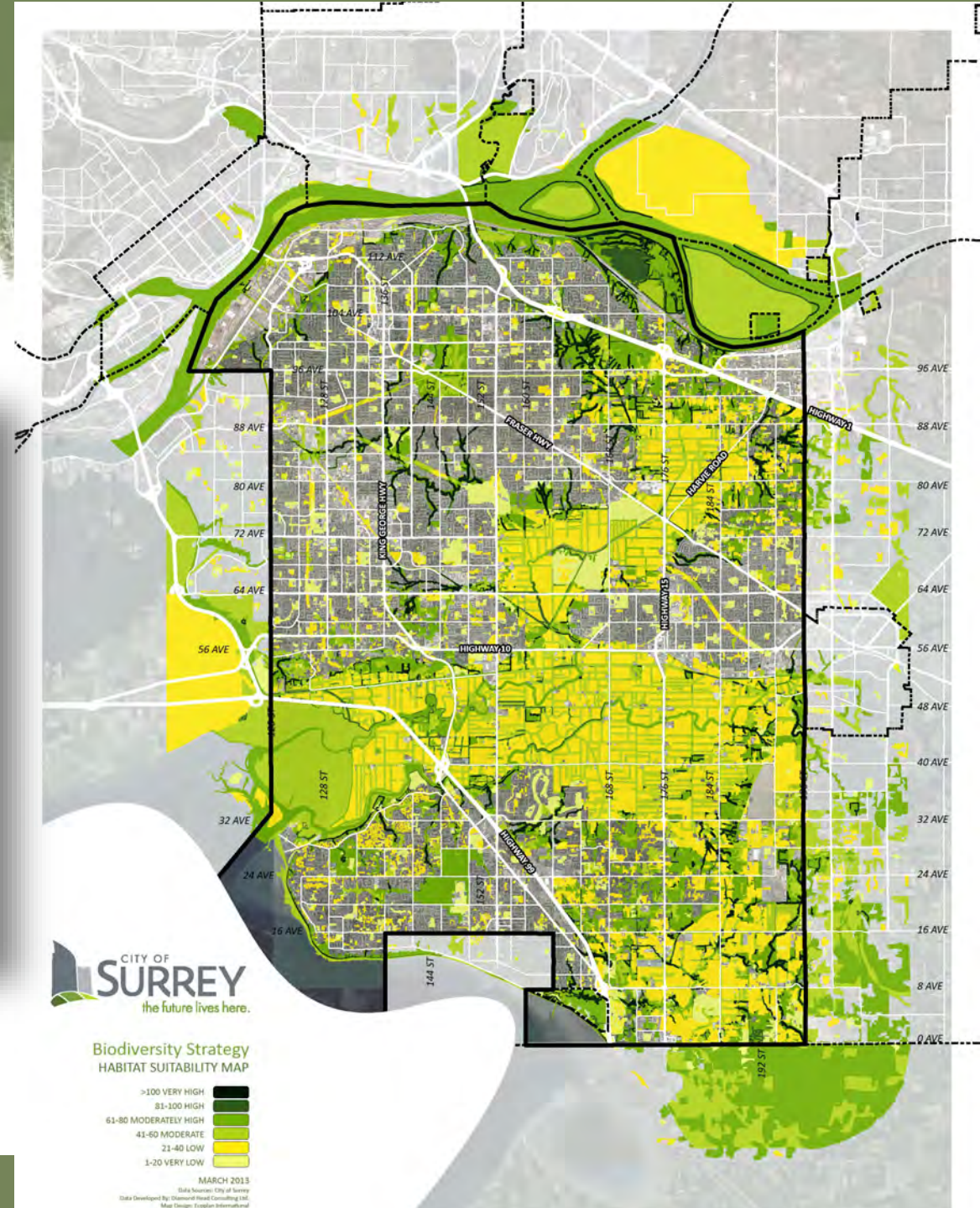




[illegible]

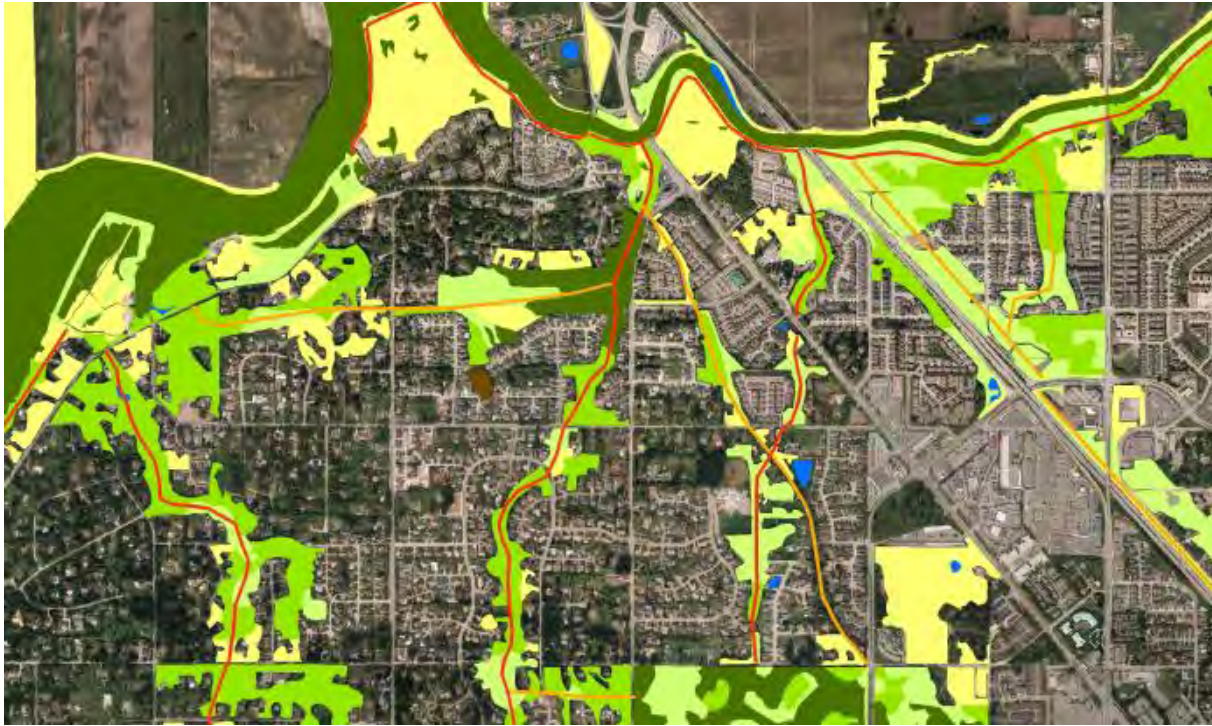


# Habitat Suitability





# Green Infrastructure Network





# Green Infrastructure Network



City of Surrey  
**Biodiversity  
Strategy**

Management Units  
November 1, 2012  
Map created by Diamond Head Consulting Ltd.  
0 0.5 1 2 km



City of Surrey  
**Biodiversity  
Strategy**

Management Units  
November 1, 2012  
Map created by Diamond Head Consulting Ltd.  
0 0.5 1 2 km



City of Surrey  
**Biodiversity  
Strategy**

Management Units  
November 1, 2012  
Map created by Diamond Head Consulting Ltd.  
0 0.5 1 2 km





# Green Infrastructure Network





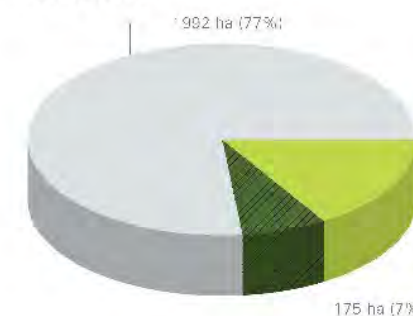
# Biodiversity Management Areas



East Surrey between Langley and the ALR

50 805 • Spring 2014

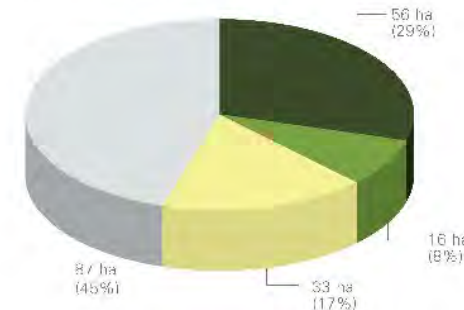
### TOTAL HABITAT



2576 HA TOTAL AREA



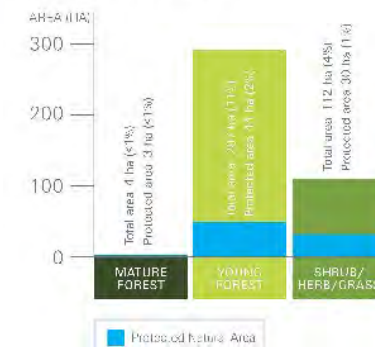
### RIPARIAN HABITAT



175 HA TOTAL RIPARIAN AREA



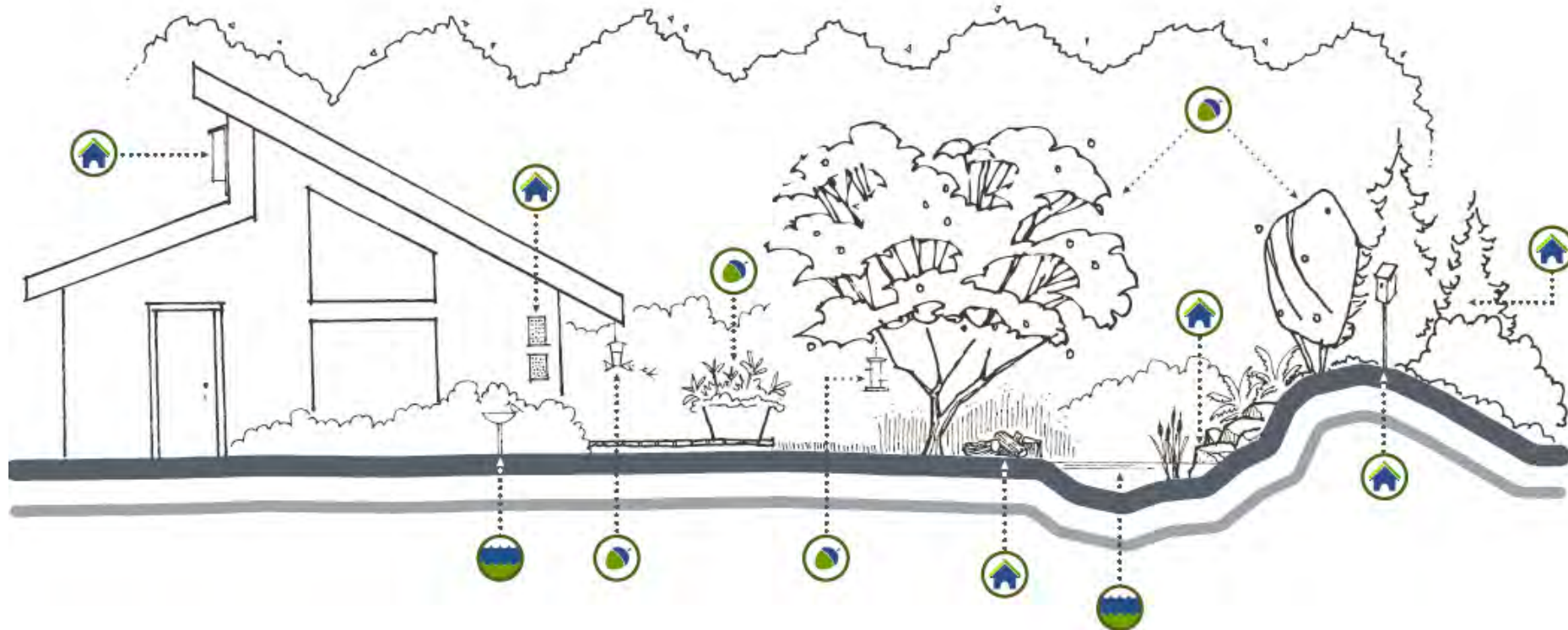
### TERRESTRIAL HABITAT







## Backyard Biodiversity

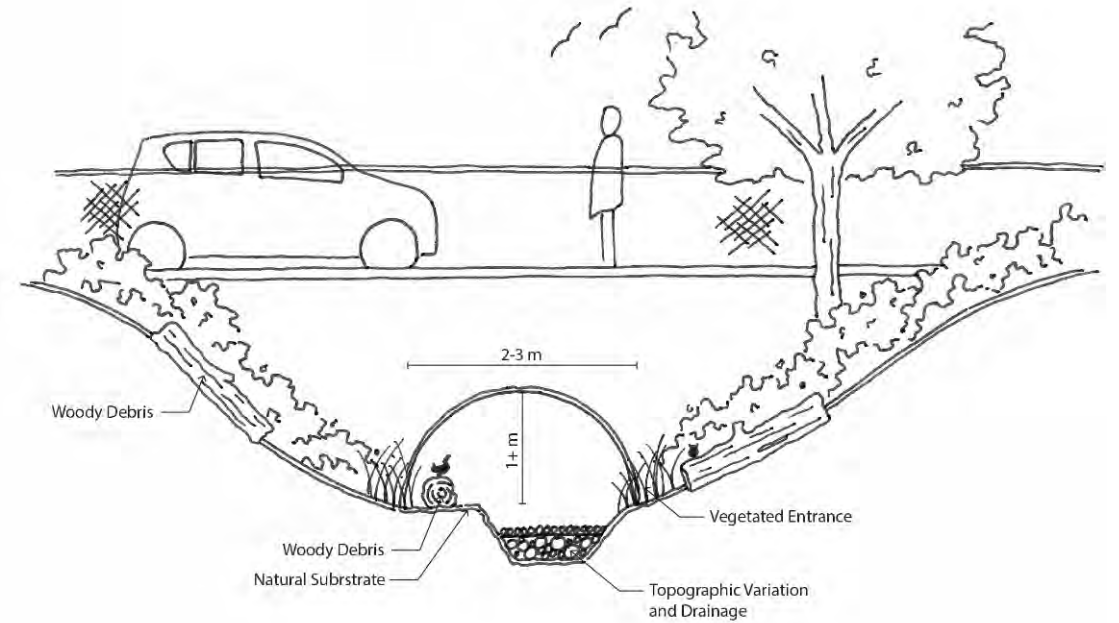
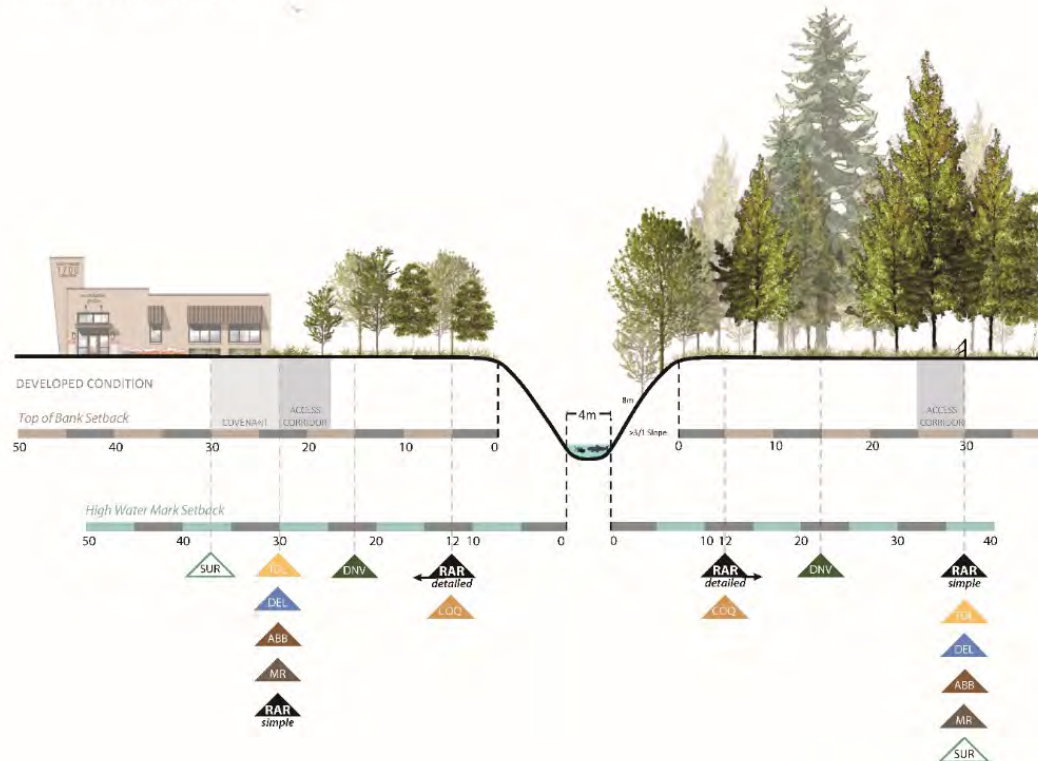




# Policy and implementation

## Fish Presence

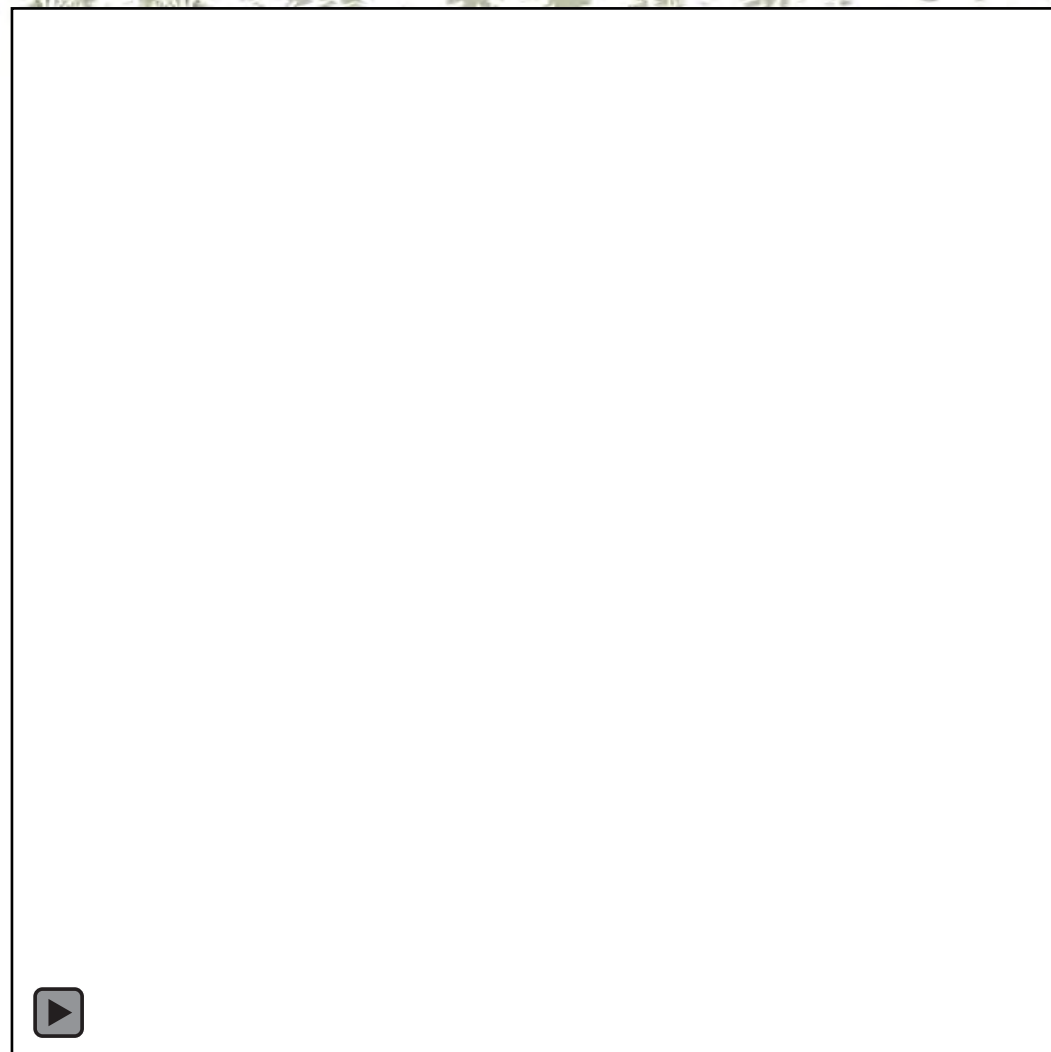
Class A or A(O) Watercourse













# Planning for future generations

