

OPEN HOUSE SEPTEMBER 9 AND 22, 2020

INTRODUCTION

This trails study is intended to gather information from stakeholders and users of the trails on Thornhill.

A variety of trail use is currently taking place on Thornhill including hiking, dog walking, trail biking and equestrian use.

BACKGROUND

B.C. Geographical Names lists Grant Hill as the official name of this small hill in east Maple Ridge, which was likely named during one of the initial surveys of the Fraser River in 1860. The south slope of Grant Hill is often referred to as Thornhill, a name derived for the local area after James Thorne who was an early farmer and settler of the area.



BEAR RIDGE TRAIL



GEORGES WAY TRAIL



INFORMAL TRAILS





MAPLE RIDGE

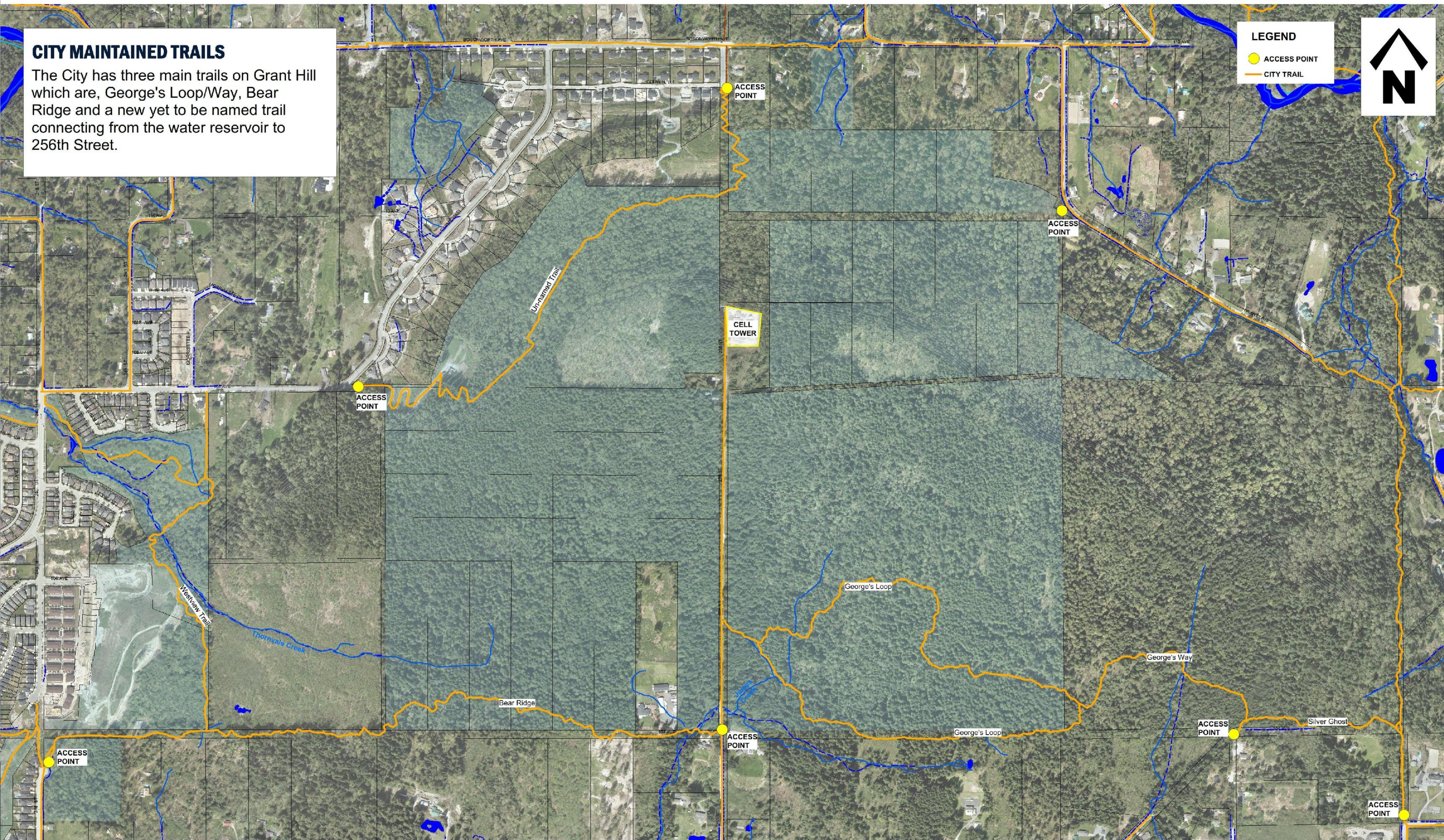
British Columbia

# THORNHILL TRAILS

## EXISTING CITY MAINTAINED TRAILS

### CITY MAINTAINED TRAILS

The City has three main trails on Grant Hill which are, George's Loop/Way, Bear Ridge and a new yet to be named trail connecting from the water reservoir to 256th Street.







MAPLE RIDGE

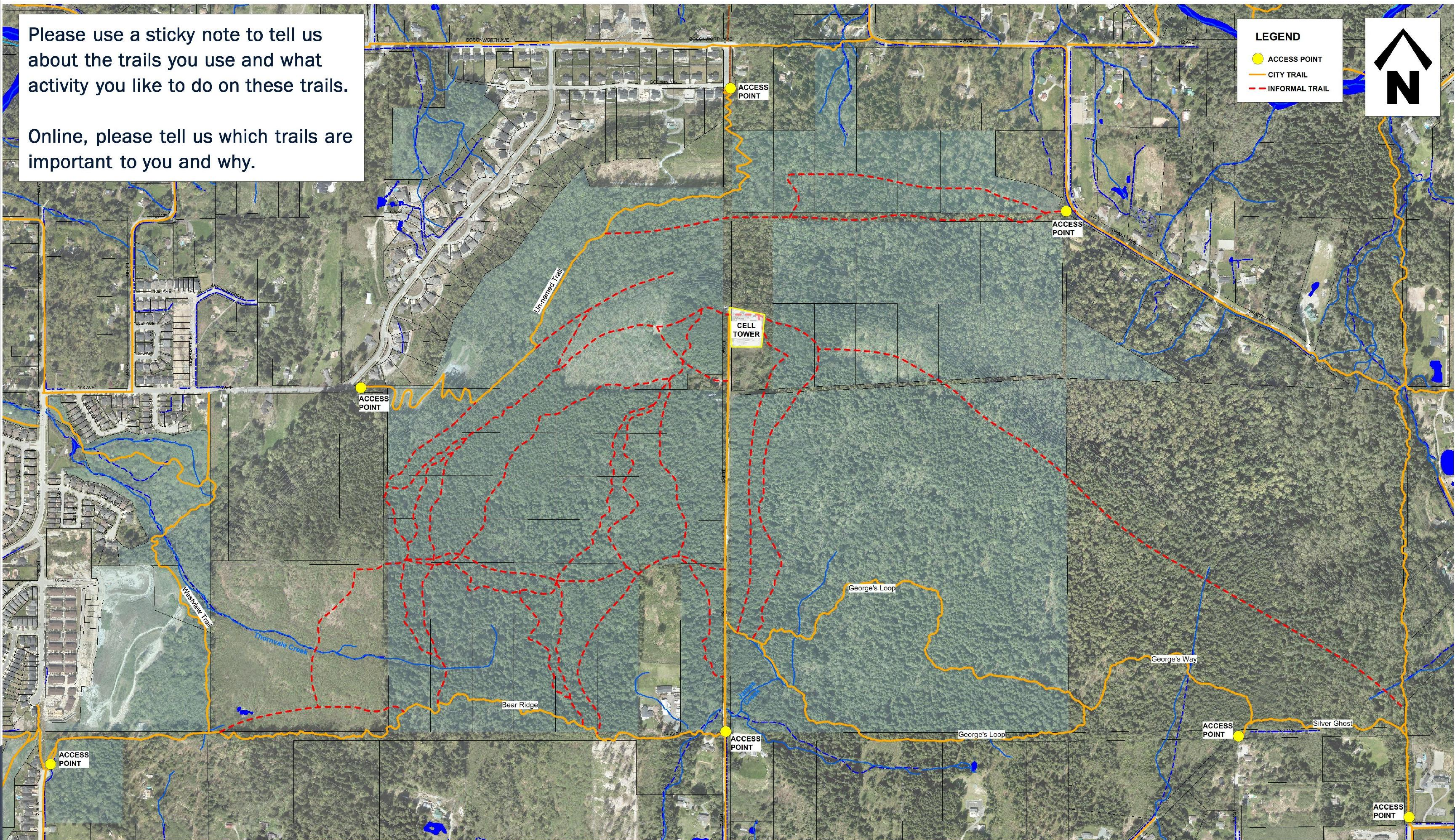
British Columbia

# THORNHILL TRAILS

## TRAILS ON THORNHILL

Please use a sticky note to tell us about the trails you use and what activity you like to do on these trails.

Online, please tell us which trails are important to you and why.



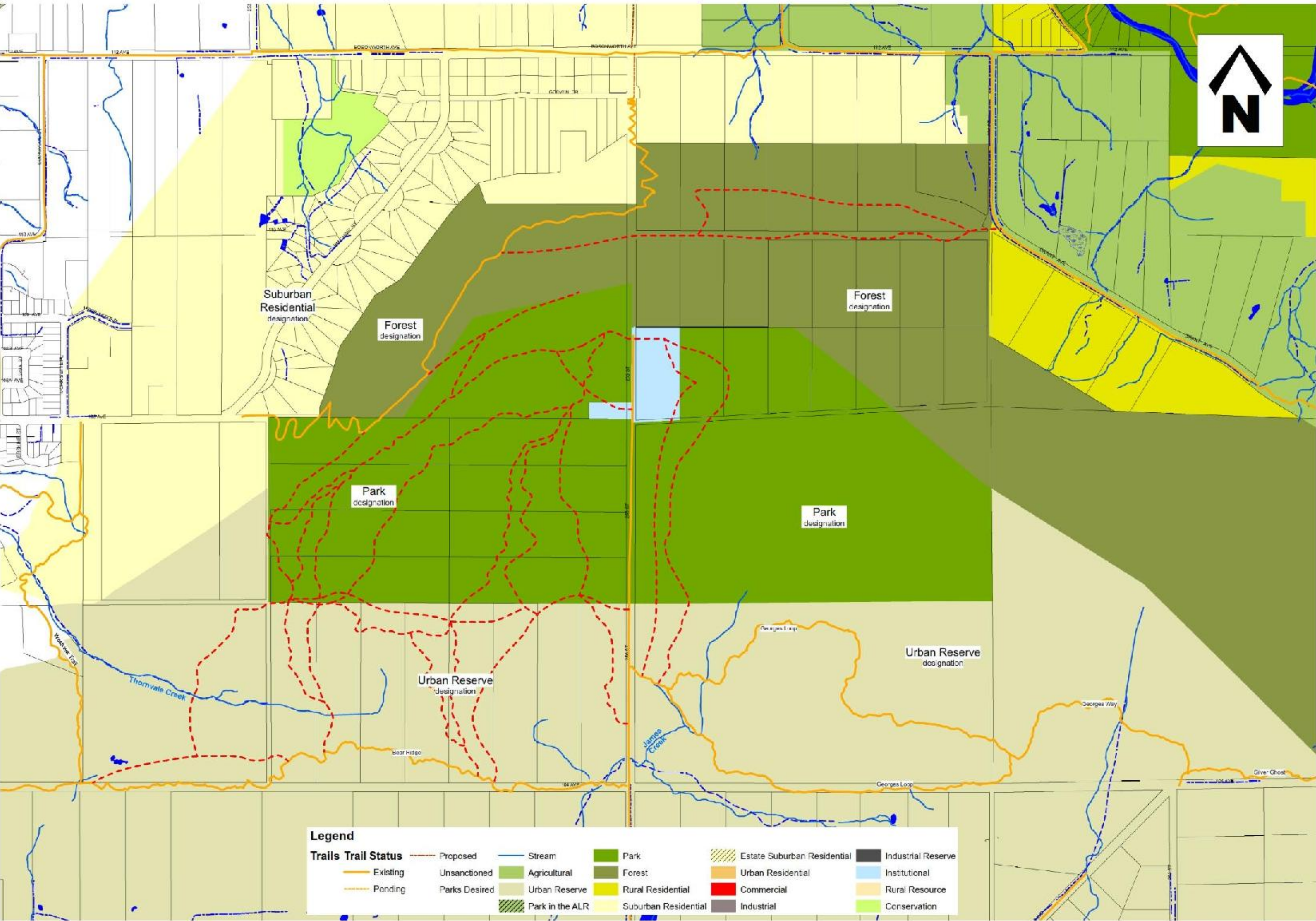


THE OFFICIAL

COMMUNITY PLAN (OCP)

A portion of the Thornhill area is designated as “Urban Reserve” in the City's Official Community Plan (OCP), which means that these lands are identified for future urban development once certain policy conditions are realized. The criteria for future support of urban level densities in the Thornhill area are provided in policies 3-23 through 3-26 of section 3.1.5 in the OCP.

Many of the trails in the Thornhill area will be reviewed in the future when this Urban Reserve area is being considered for urban development. As the development timeline advances, an area planning process would be undertaken at the appropriate time to inform land use decisions.





# What's Next

Public Engagement  
Trail Study and  
comment form

We  
are  
here

# Share Your Comments

Please take a moment to share your comments and thoughts with us by completing one of our comment forms. You can also take a comment form home and return it to the City by mail, email or in person.



Summarize  
Feedback

What we heard  
from you

# Check Back

Please check back at [www.mapleridge.ca/1441/Park-Development-Projects](http://www.mapleridge.ca/1441/Park-Development-Projects) to see updates on the project.

