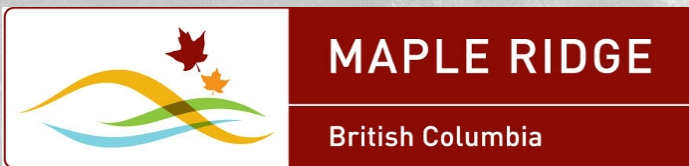


# Albion Community Centre

PROJECT UPDATE  
09.18.2018



**CHP ARCHITECTS**  
Architecture • Landscape Architecture



# EXTERIOR RENDERING



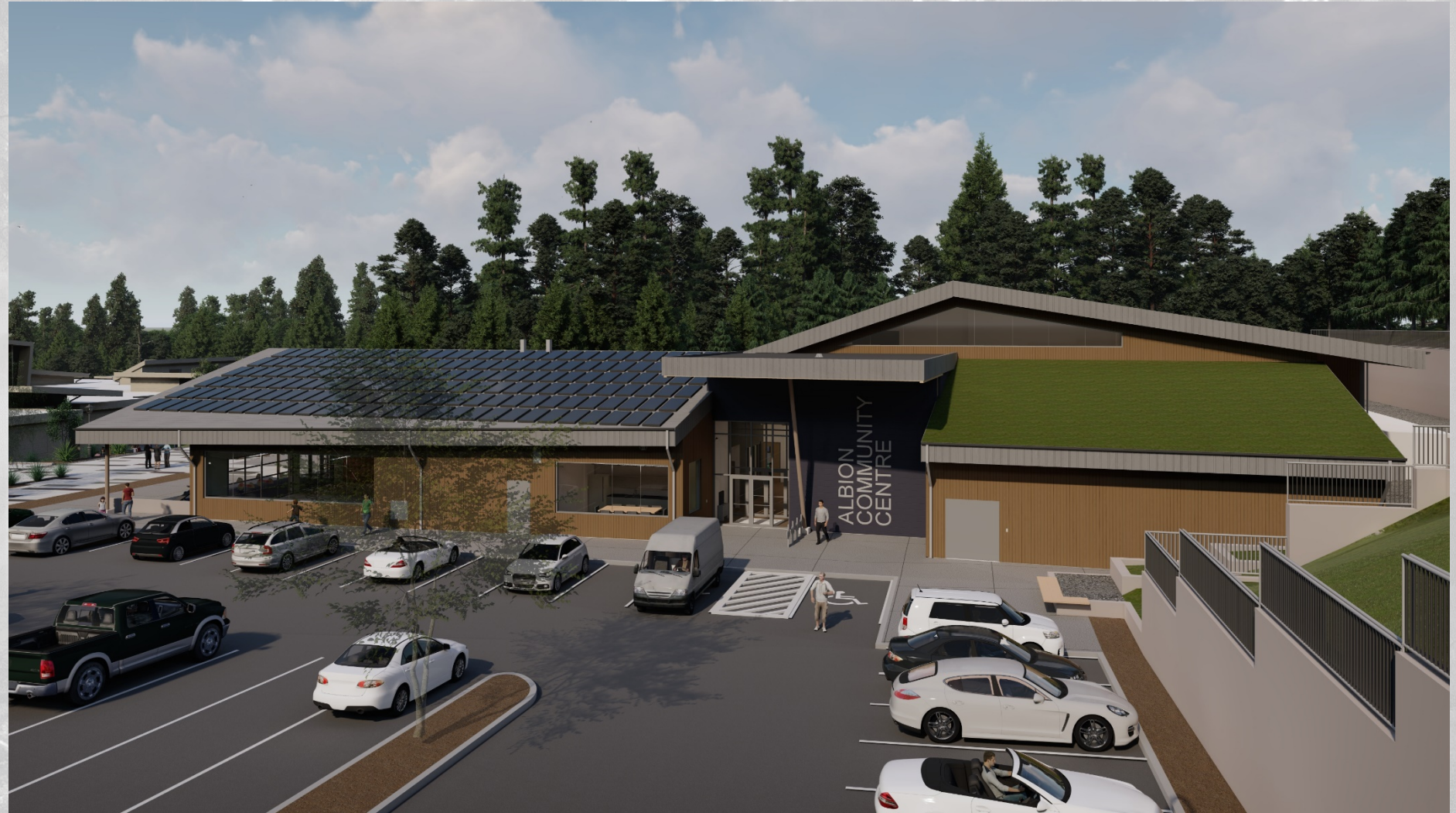
ALBION COMMUNITY CENTRE



**CHP** ARCHITECTS



# EXTERIOR RENDERING



ALBION COMMUNITY CENTRE



**CHP** ARCHITECTS



# EXTERIOR RENDERING



ALBION COMMUNITY CENTRE



**CHP** ARCHITECTS



# EXTERIOR RENDERING



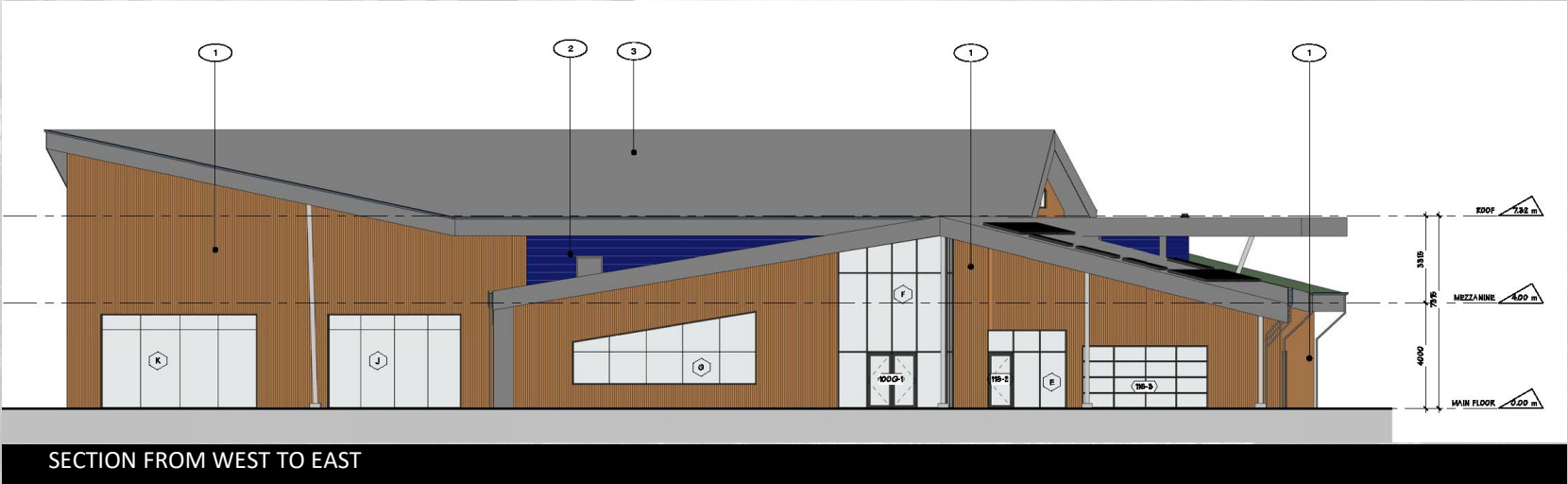
ALBION COMMUNITY CENTRE



CHP ARCHITECTS



# EXTERIOR ELEVATIONS



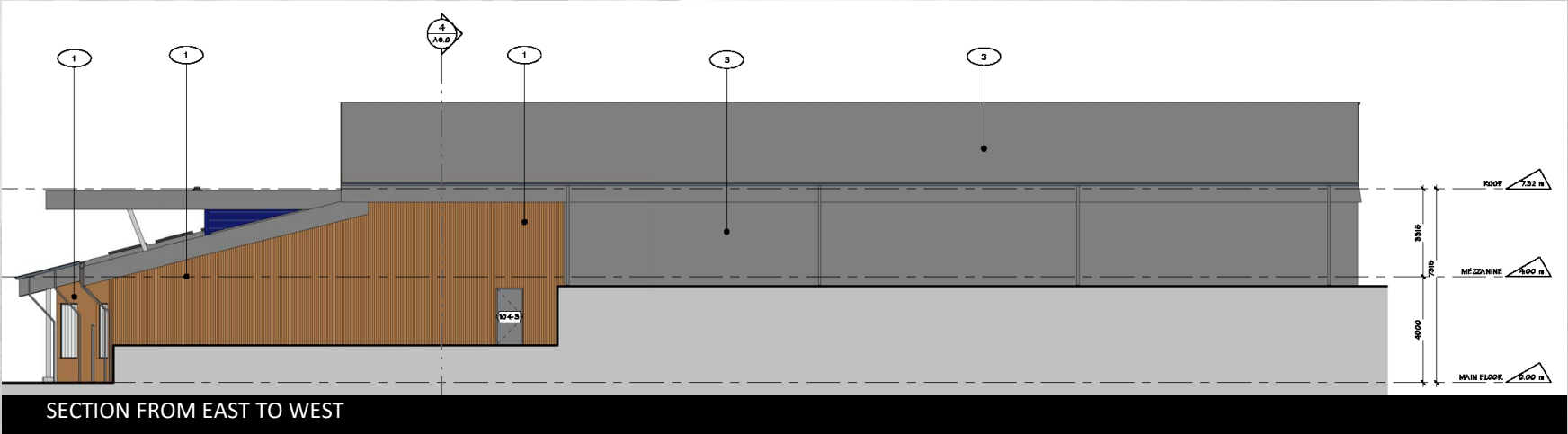
ALBION COMMUNITY CENTRE



CHP ARCHITECTS



# EXTERIOR ELEVATIONS





## 1. GRANT UPDATE

- Applied: 2018 Enabling Accessibility Fund (EAF) mid-sized call for concept “step 1”
- Received: \$21,300 FCM 2018 Green Building Feasibility Grant  
\$1M Child Care Grant
- We will apply for: The FCM 2018 Green Building Fund (depending on the results of the feasibility study)  
Cultural spaces grant  
Investing in Canada Plan – expected to be announced at UBCM

## 2. OPERATING MODEL



# SUSTAINABILITY

## Energy Efficiency & Sustainability Update

- Finalizing the Sustainability Feasibility Study
- Applying for the Green Municipal Fund Grant to offset costs of sustainable initiatives

## Current Proposed Green Design Strategy resulting from Feasibility Study

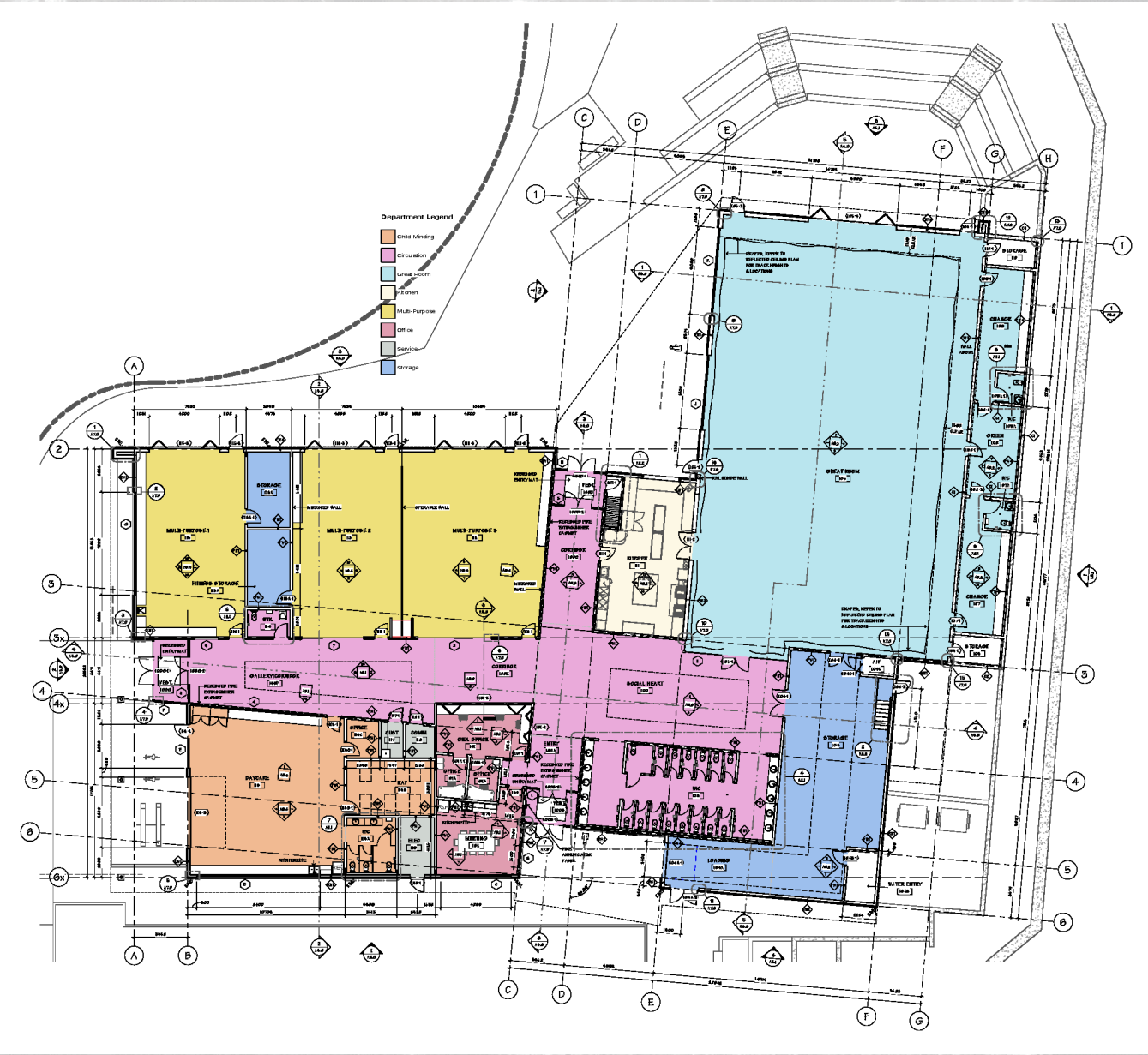
- Approaching Net Zero by providing 50% of annual energy using south facing photovoltaics, enhanced building envelope & enhanced high efficiency mechanical systems and heat recovery



PHOTOVOLTAIC CELLS



# DESIGN UPDATE





# INTERIOR FINISHES

This interior scheme will portray neutral and earth tones for a contemporary, modern look. Soft wood tones will be spread from floor to ceiling. The design will highlight artwork and festivities.



ALBION COMMUNITY CENTRE



CHP ARCHITECTS



# INTERIOR RENDERING



ALBION COMMUNITY CENTRE



**CHP** ARCHITECTS



# INTERIOR RENDERING



ALBION COMMUNITY CENTRE



**CHP** ARCHITECTS



# INTERIOR RENDERING



ALBION COMMUNITY CENTRE



**CHP** ARCHITECTS



# INTERIOR RENDERING



ALBION COMMUNITY CENTRE



**CHP ARCHITECTS**



# INTERIOR RENDERING



ALBION COMMUNITY CENTRE



**CHP ARCHITECTS**



# INTERIOR RENDERING



This interior rendering depicts a spacious, modern community center. The room features a light-colored wooden floor and a white ceiling with recessed lighting. Large windows on the left side provide a view of the outdoors. Several green exercise mats are laid out on the floor, and several people are shown in various exercise poses, including running, standing, and performing push-ups. A large mirror on the right wall reflects the room and the people. A reception desk is visible in the background.

ALBION COMMUNITY CENTRE

 MAPLE RIDGE  
British Columbia

**CHP ARCHITECTS**



ALBION COMMUNITY CENTRE

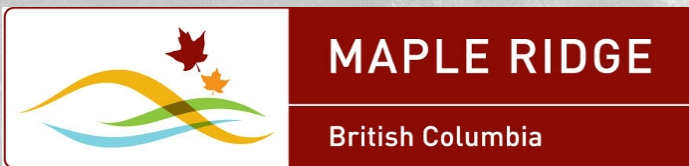


# CHP ARCHITECTS



# Albion Community Centre

PROJECT UPDATE  
09.18.2018



**CHP ARCHITECTS**  
Architecture • Landscape Architecture