



MAPLE RIDGE

British Columbia

WELCOME!

MCCLURE DRIVE TRAFFIC CALMING PLAN **OPEN HOUSE**

OVERVIEW OF MCCLURE DRIVE

In response to a resident request, McClure Drive was identified for a traffic calming initiative.

Today's Purpose

- Provide the findings of our detailed assessment of McClure Drive
- Present the proposed traffic calming treatments identified for this corridor
- Seek your input and feedback



McClure Drive between 240 Street and 245 Street is an east-west, meandering, minor collector in the Albion Neighbourhood. Its typical cross section consists of wide pavement and one travel lane in each direction with on-street parking on both sides. Adjacent land use consists of single-family residential dwellings and, as a result, there is a high density of driveways fronting both sides of the road. This corridor is also a shuttle bus route that is served by Route 748.

PROJECT HISTORY & TIMELINE

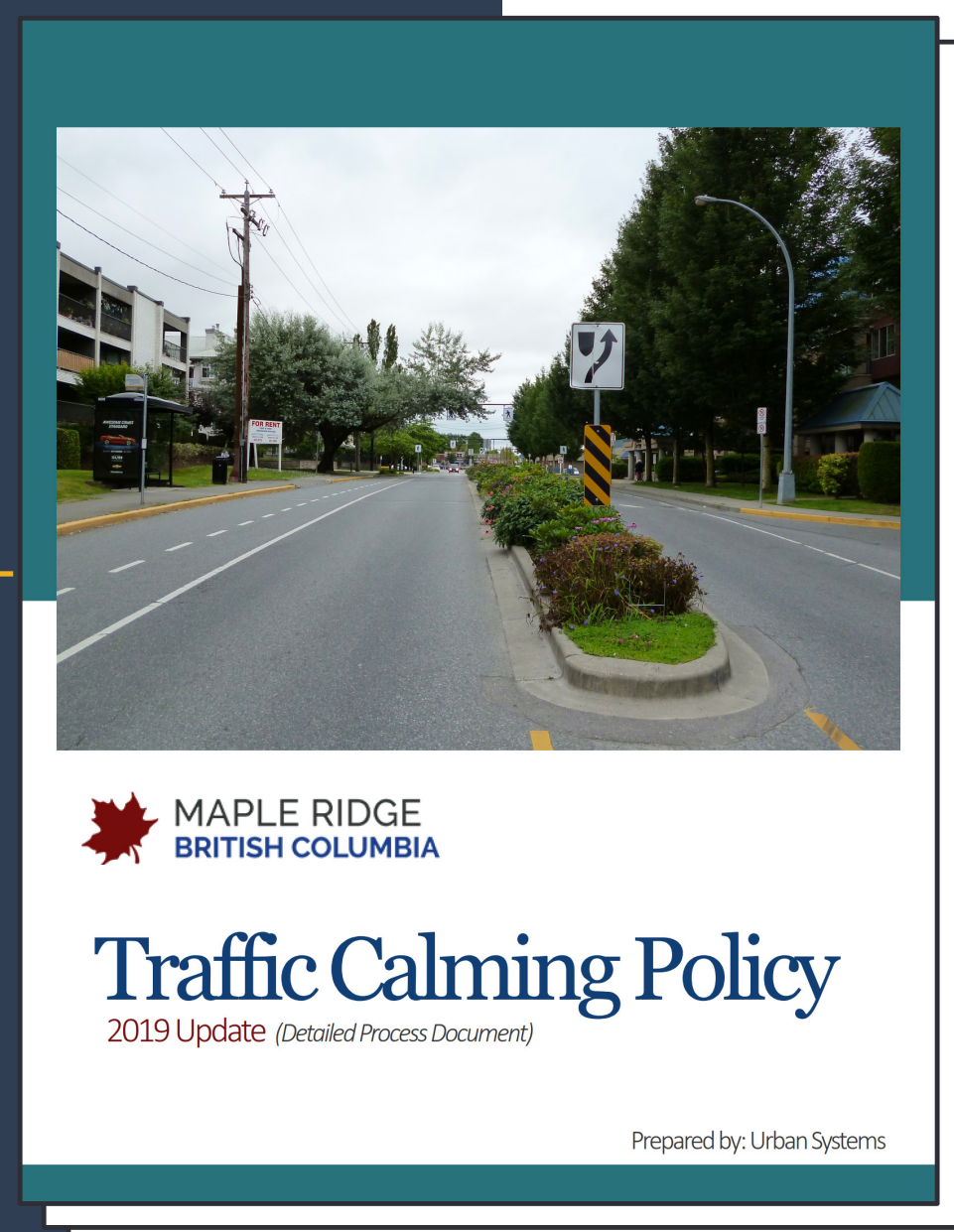
MCCLURE DRIVE TRAFFIC CALMING PLAN OPEN HOUSE



Traffic Calming Policy

Updated in 2019, the City's Traffic Calming Policy is used to guide the standardized process for evaluating and implementing neighborhood traffic calming improvements in Maple Ridge.

The policy is publicly available on our website.



TRAFFIC CALMING ON MCCLURE DRIVE

PURPOSE OF TRAFFIC CALMING PLANS

Improve Safety

By reducing the potential and lessening the consequences of conflicts between road users

Preserve Neighbourhood Livability

By minimizing the negative impacts of shortcutting and speeding and enhancing the streetscape and public realm

THE THREE “E”S OF TRAFFIC CALMING

Engineering

Implementing effectively engineered treatments that can include both traditional traffic management measures as well as newer innovative approaches.

Education

Providing road users with information about how changes in behaviours and attitudes can help to ease traffic impacts in their community. Informing residents about traffic calming initiatives

Enforcement

Enlisting the support of local enforcement agencies to target traffic monitoring at key locations of concern.

MCCLURE DRIVE TRAFFIC CALMING PLAN

OPEN HOUSE

Traffic calming treatments suitable for Minor Collectors (McClure Drive)

Not all traffic calming measures are equally appropriate for any given roadway. There are many factors that contribute to determining the best traffic calming devices, including road classification, traffic volume, transit routes, terrain, climate, and emergency response needs. McClure Drive is classified as a Minor Collector, which allows for the following road calming measures:

	Traffic Calming Measure	Minor Collector	Local	Lanes
Vertical	Raised Crosswalk	✓	✓	
	Raised Intersection	✓	✓	
	Sidewalk Extension	✓	✓	
	Speed Hump		✓	✓
	Textured Crosswalk	✓	✓	
	Speed Cushion		✓	✓
Horizontal	Chicane (one lane)		✓	
	Curb Radius Reduction	✓	✓	
	On-Street Parking	✓	✓	
	Raised Median Island	✓	✓	
	Traffic Circle	✓	✓	
	Gateway Median		✓	
	Curb Extension	✓	✓	
	Road Narrowing / Road Diets	✓	✓	
	Vertical Centreline Treatment	✓		
Access Restriction	Directional Closure		✓	
	Diverter		✓	
	Full Closure		✓	
	Intersection Channelization		✓	
	Raised Median Through Intersection	✓	✓	
	Right-in / Right-out Island		✓	

WHAT'S SUITABLE FOR MCCLURE DRIVE?

? Why is the City not considering Speed Humps on McClure Drive?

Speed humps are not a suitable traffic calming measure for McClure Drive based on the following factors:

- McClure Drive is a collector travel route intended to carry higher volumes of traffic and speed humps are not a permitted traffic calming device
- TransLink does not support speed humps on transit routes.
- The Transportation Association of Canada does not recommend speed humps on roadways with grades in excess of 8% (TAC Canadian Guide to Traffic Calming 2018)
- Speed humps create challenges for emergency vehicle response

? Was a traffic circle considered as part of this plan?

There are three types of traffic circles predominantly in use in Canada (mini-roundabout, single-lane roundabout and two-lane roundabout. Based on a review of traffic volumes, a mini-roundabout is the best fit for McClure Drive. The design team reviewed potential locations for a mini-roundabout along McClure Drive and found that the road grade and impacts to private property makes a mini-roundabout option not feasible on this corridor.

HORIZONTAL DEFLECTIONS & NARROWING



Curb Extensions



Traffic Circles

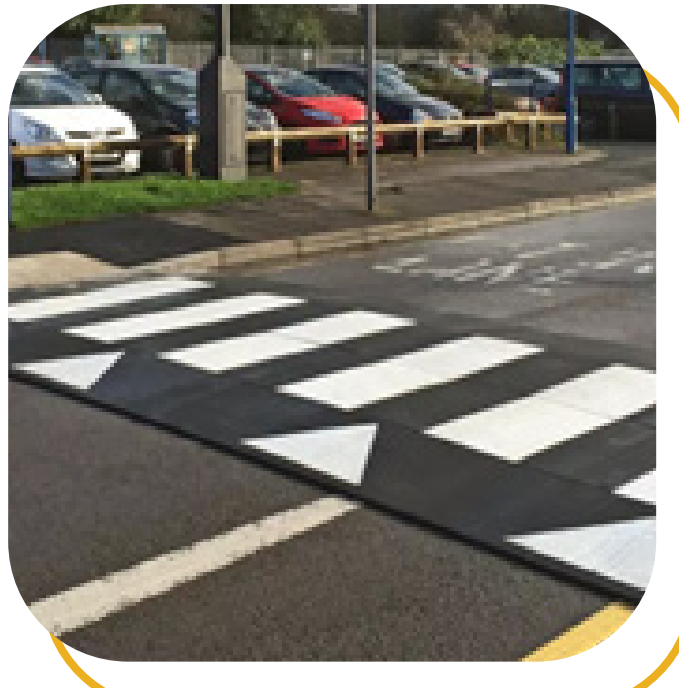


Raised Centre Median

VERTICAL DEFLECTIONS



Speed Humps

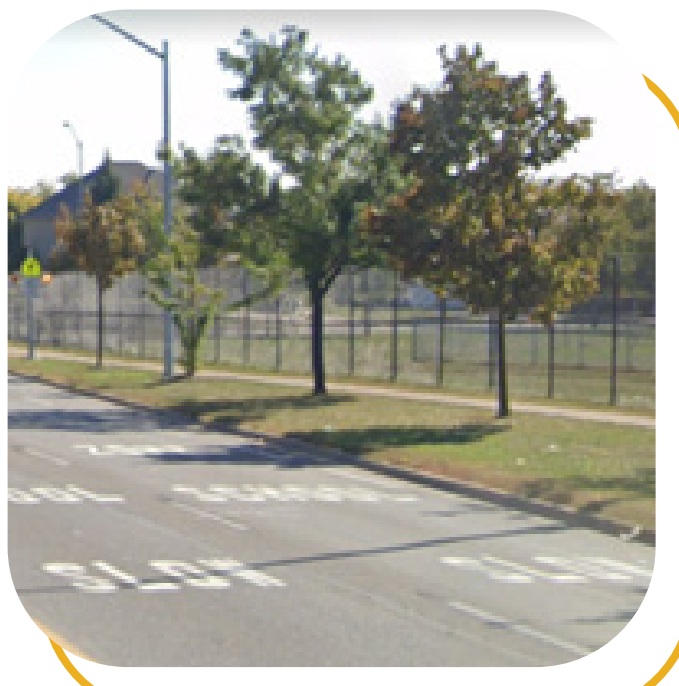


Raised Crosswalks



Raised Intersections

PAVEMENT MARKINGS & TREATMENTS



Pavement Markings



Painted Crosswalks

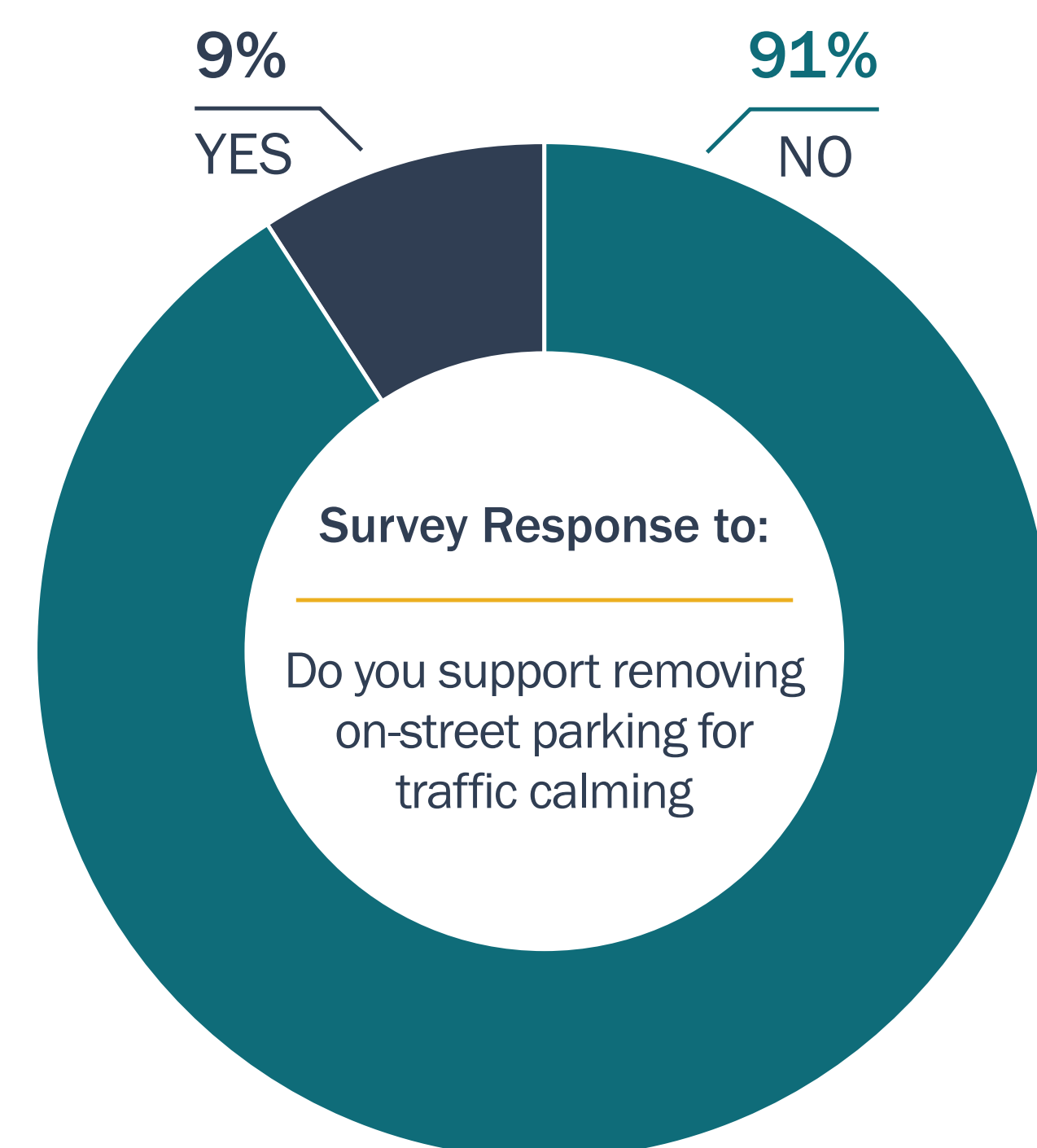


Textured Surfaces

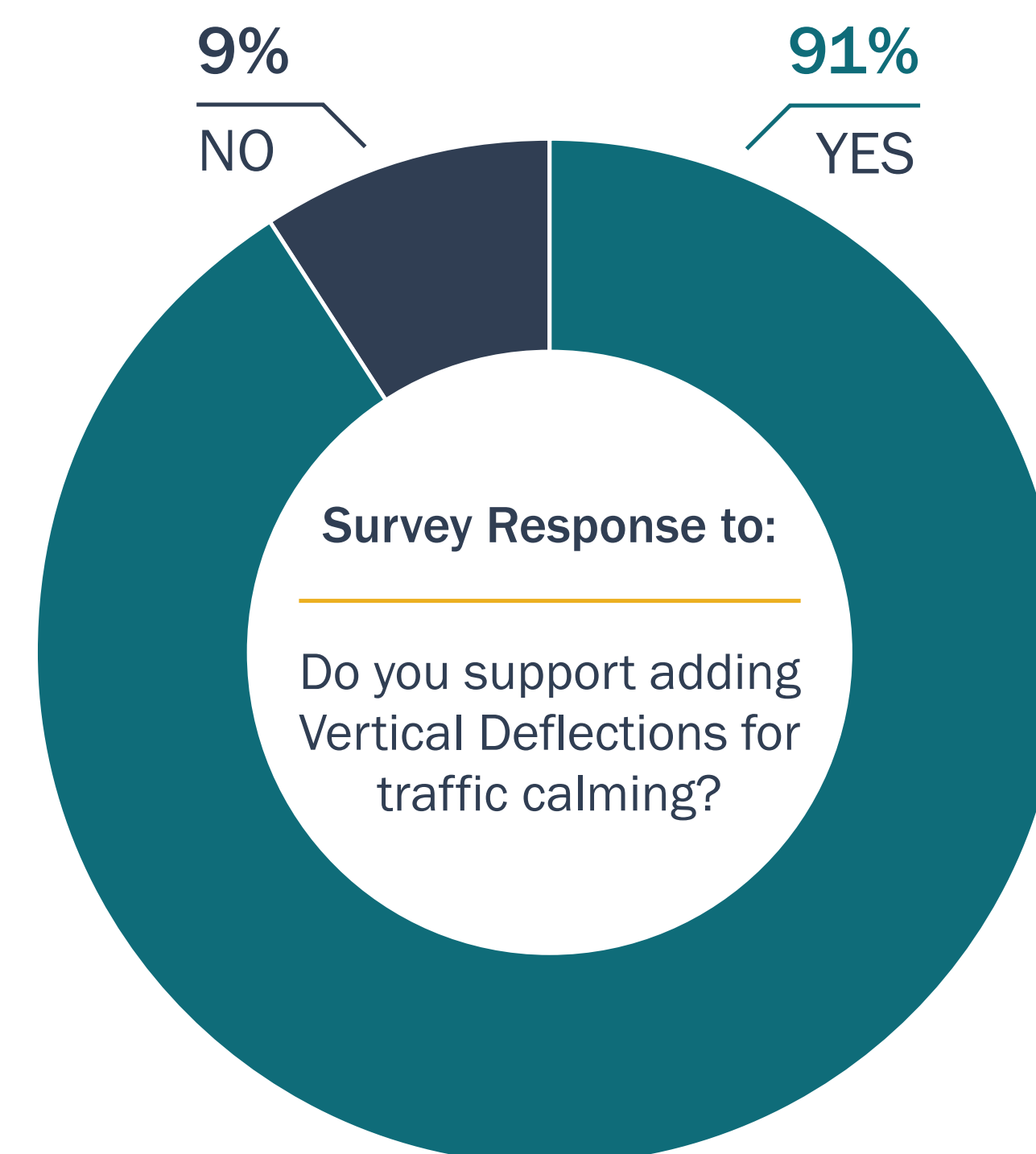
WHAT WE HEARD

MCCLURE DRIVE TRAFFIC CALMING PLAN OPEN HOUSE

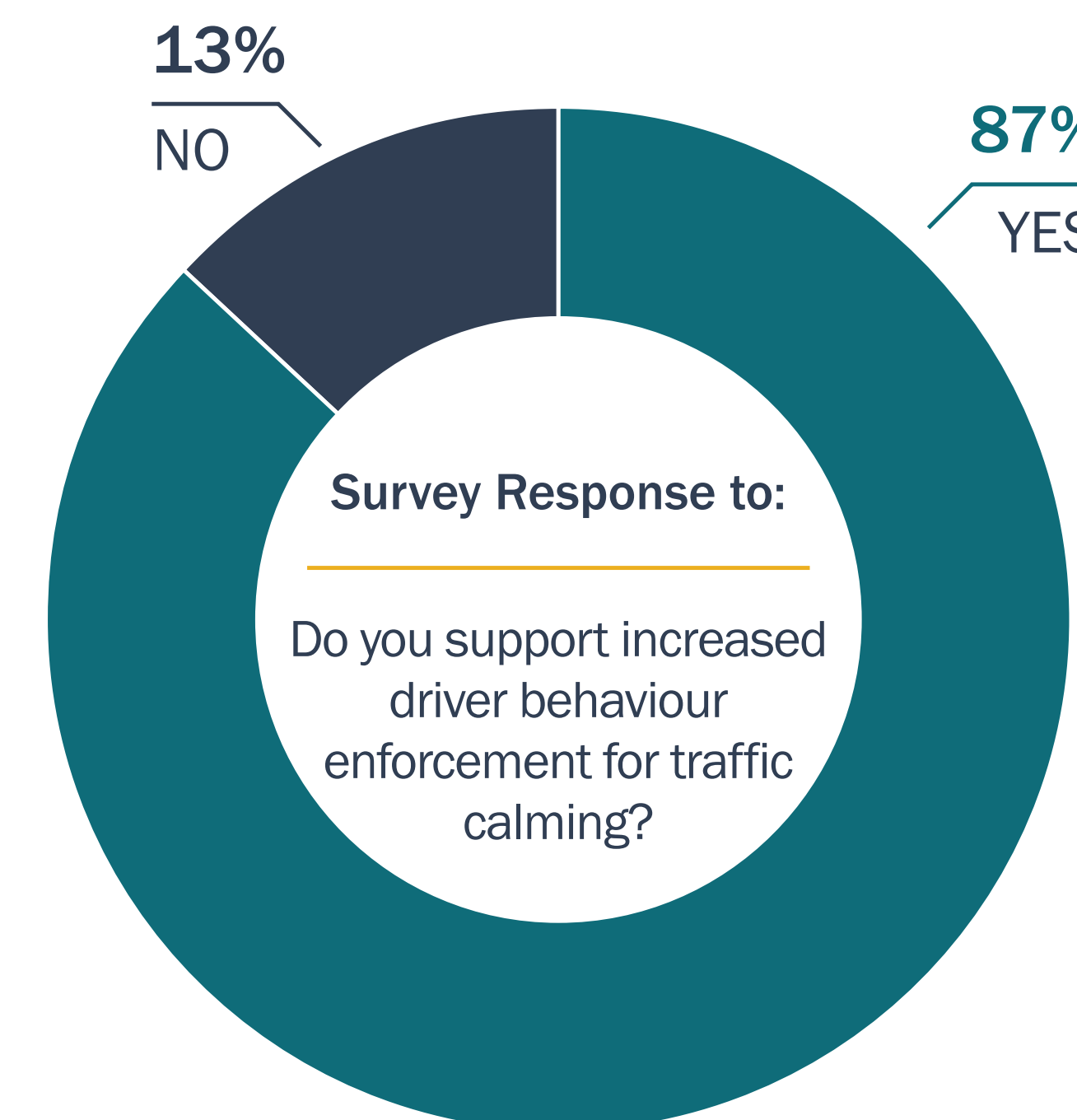
The City conducted a survey of the community in the spring of 2022 to gather input and understand residents' concerns about McClure Drive between 240 Street and 245 Street.



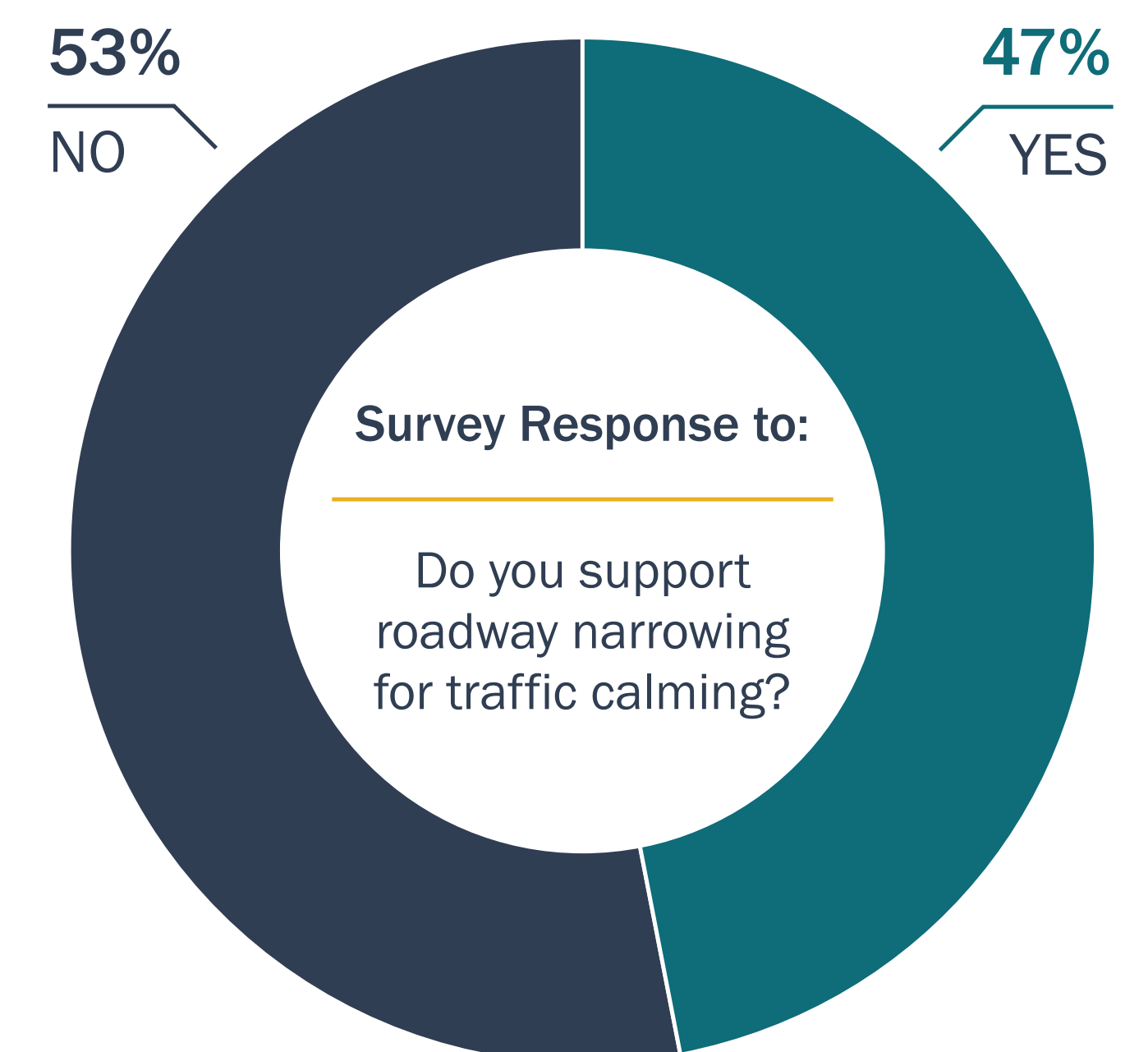
Traffic calming treatments often require a reduction in on-street parking in order to implement the traffic calming measure(s)



Due to the road classification for McClure Drive (Minor Collector) and impacts to emergency and transit vehicles, speed humps are not suitable for this corridor



The City will coordinate with local RCMP to increase enforcement on McClure Drive as police priorities permit.



Horizontal deflections and road narrowing are typical traffic calming treatments for collector roads

WHAT WE OBSERVED

SPEEDS & VOLUMES

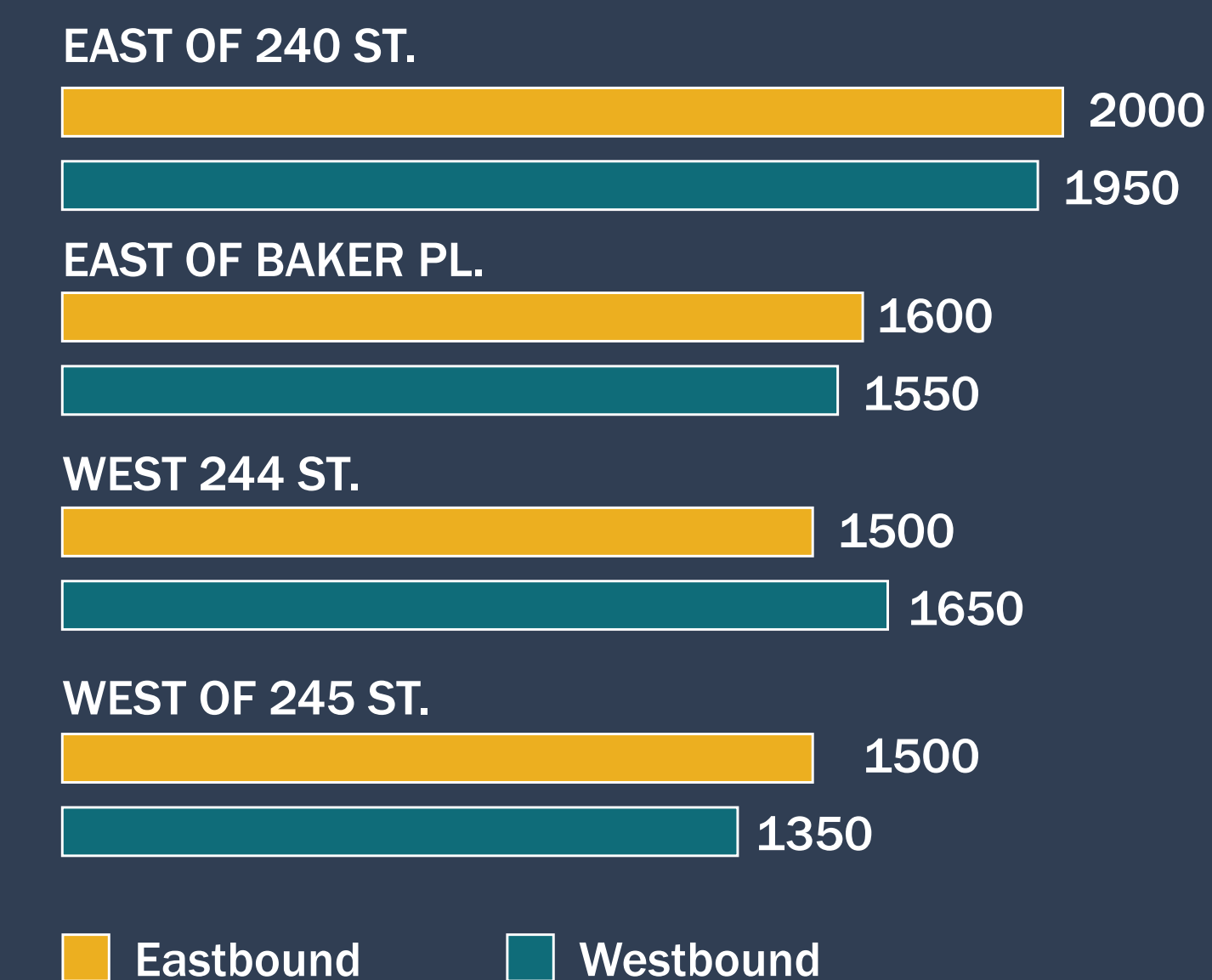
McClure Drive Speed Limit: 50km/h

	EASTBOUND KM/HR	WESTBOUND KM/HR
240 ST. TO 106B AVE.	49	44
106B AVE. TO 106 AVE.	58	65
106 AVE. TO BAKER PL.	51	55
BAKER PL. TO 243 ST.	63	62
243 ST. TO 244 ST.	60	60
244 ST. TO 245 ST.	45	53

Source: TomTom Data

The 85th Percentile Speed is the speed at or below which 85% of observed vehicles travel. This metric is often used to compare to the posted speed limit to assess speeding concerns.

Daily Traffic Volume



The observed volumes along McClure Drive are on the lower end of the general two-way traffic volume thresholds of collector roads (between 1,000 to 12,000 vehicles per day)

Source: Sep 2021 counts

MCCLURE DRIVE TRAFFIC CALMING PLAN

OPEN HOUSE

Challenges for Traffic Calming on McClure Drive

The unique topography and physical characteristics of McClure Drive create notable challenges for installing traffic calming and require thorough consideration:



Steep (longitudinal) grades create challenges for drivers in winter conditions and limit the application of traffic calming treatments such as speed humps and curb modifications, which should be applied with caution to avoid causing safety hazards



Horizontal curves and McClure Drive's winding and meandering streetscape limits sightlines for drivers, making it difficult for drivers to observe traffic calming treatments



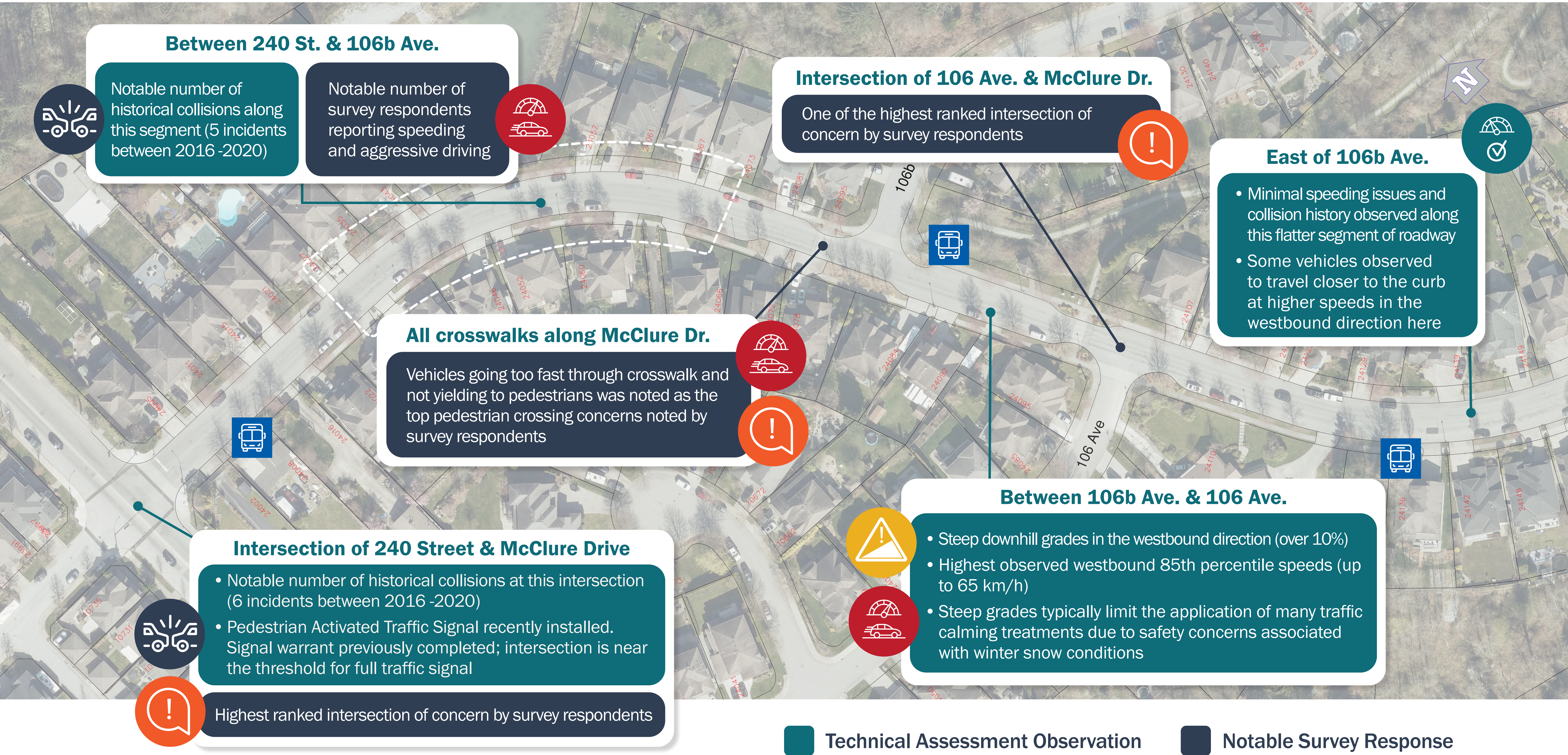
High density of driveways along McClure Drive limit the locations where traffic calming treatments can be installed as we must ensure that access to properties are not impacted



Constrained right-of-way at intersections can limit the type of treatments that can be built without the need for the City to acquire additional property and impact homeowners

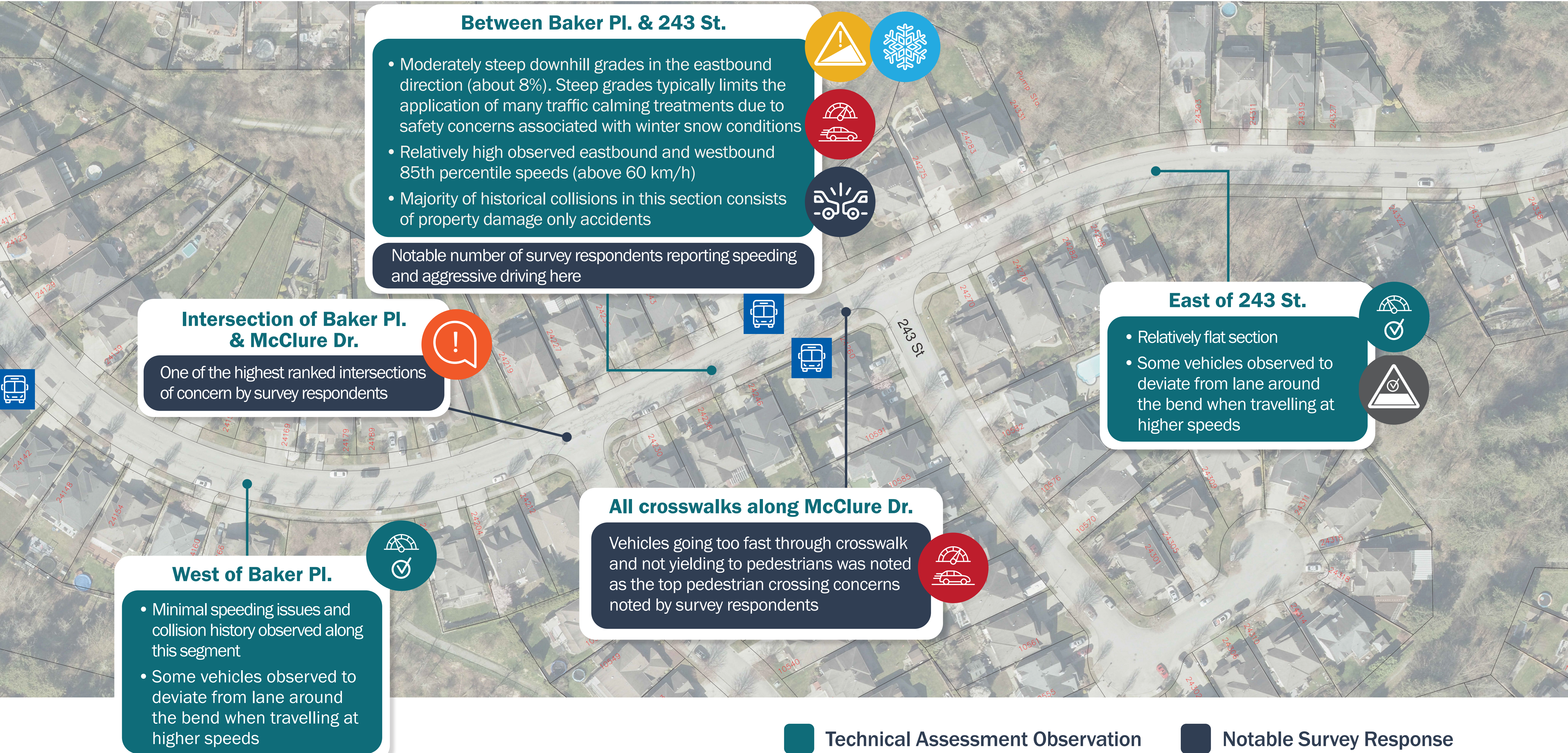
WHAT WE HEARD
& OBSERVED

240 ST TO 106 AVE



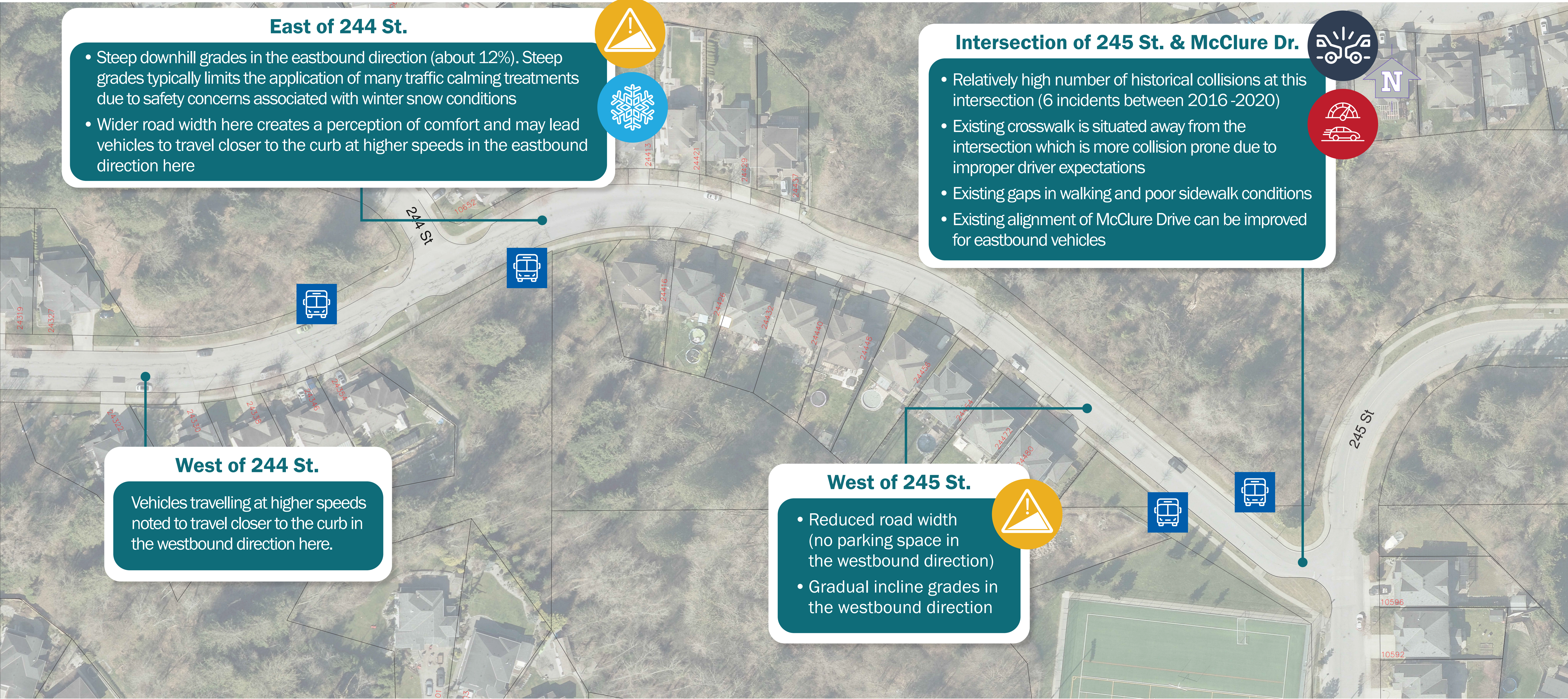
WHAT WE HEARD
& OBSERVED

BAKER PL TO 243 ST



WHAT WE HEARD
& OBSERVED

244 ST TO 245 ST



PROPOSED TREATMENTS

MCCLURE DRIVE TRAFFIC CALMING PLAN OPEN HOUSE

240 ST TO 106 AVE

Between 240 Street & 106b Ave.

- Proposed concrete or landscape centre median with curb extensions
- Encourages drivers to slow down to navigate the curves



Intersection of 106b Ave & McClure Dr

- Potential mini-roundabout installation was explored but was deemed unfeasible due to steep grades and visibility concerns

24139-24149 McClure Dr

- Proposed curb extension
- Narrows lane width around the bend to reduce speed and prevent vehicles from deviating from lane

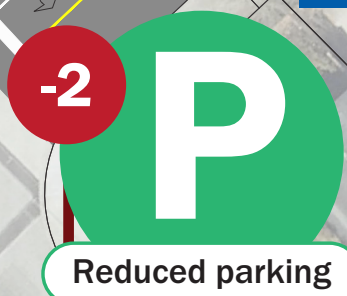


All crosswalks along McClure Dr.

Upgrade all crosswalk signs with retroreflective type to improve visibility of crosswalks in low light conditions.

Intersection of McClure Dr. & 240 St.

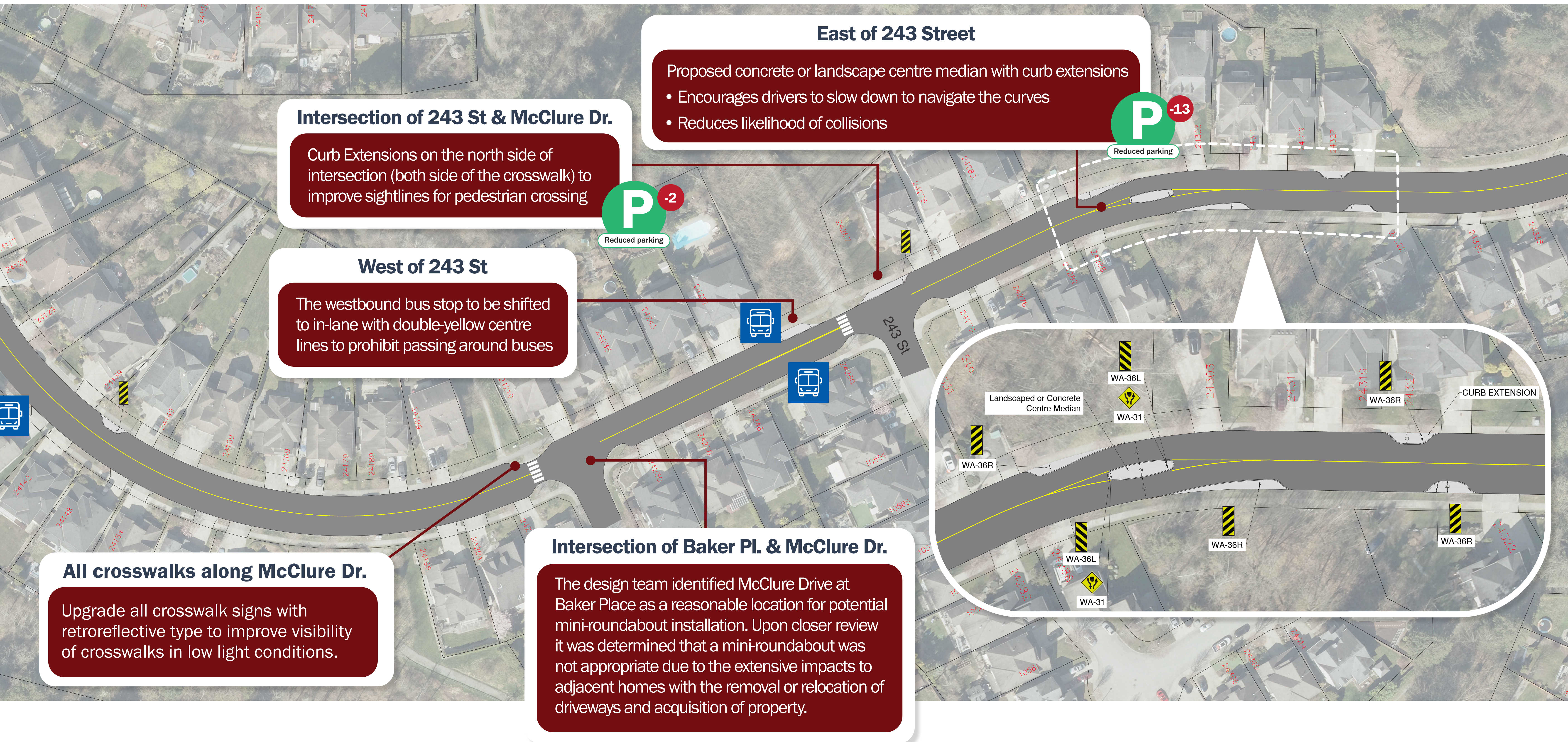
- Proposed westbound left-turn storage lane
- Improves traffic queues and narrows lane widths
- Narrow entrance lane encourages drivers to slow down



PROPOSED TREATMENTS

MCCLURE DRIVE TRAFFIC CALMING PLAN OPEN HOUSE

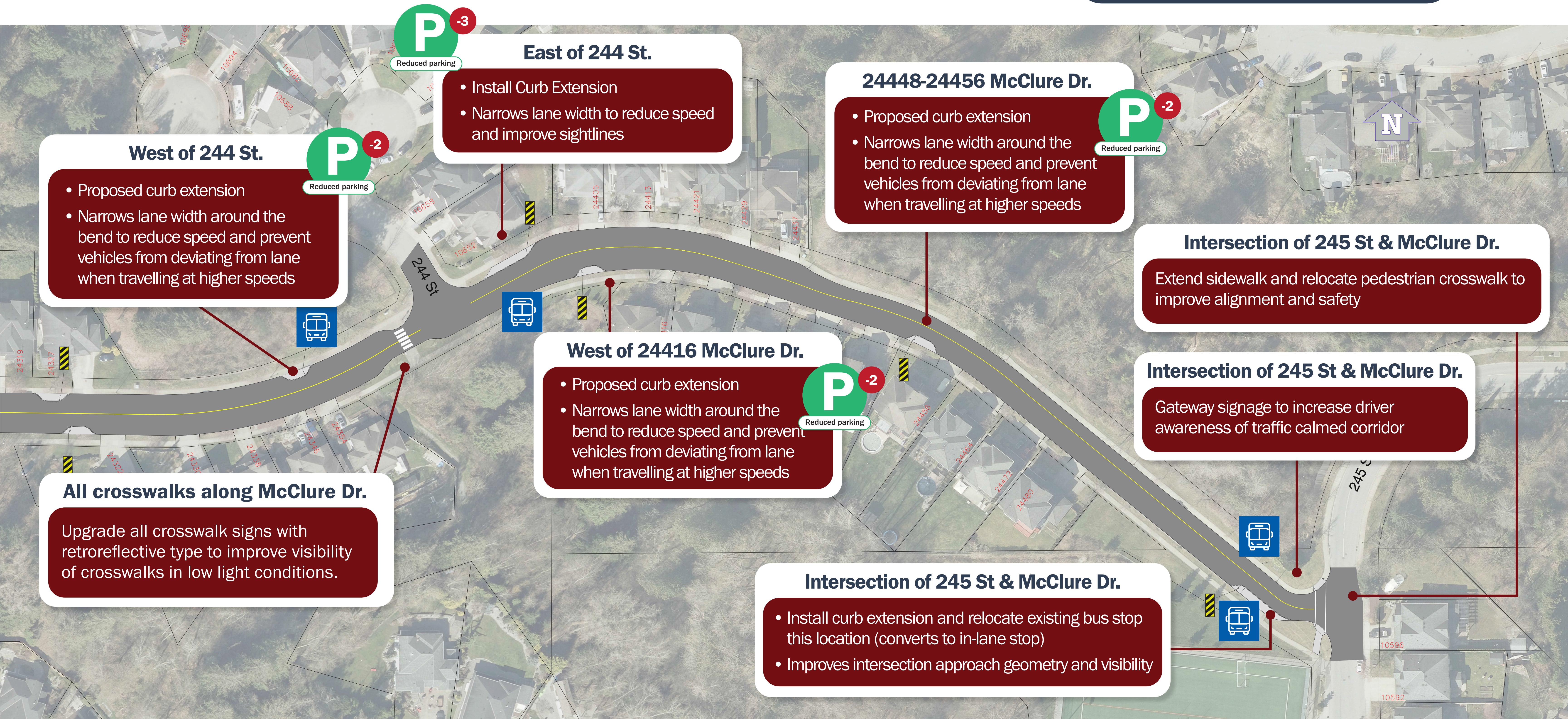
BAKER PL TO 243 ST



PROPOSED TREATMENTS

MCCLURE DRIVE TRAFFIC CALMING PLAN OPEN HOUSE

244 ST TO 245 ST



THANK YOU!

HAVE YOUR SAY!

- » Paper survey forms available at the Feedback Station
- » Scan the QR Code (below) to access the digital version
- » Online feedback opportunity is open for one week until **February 5th, 2023** (Visit the City's website for more information)



Scan this QR code to share your feedback!

MCCLURE DRIVE TRAFFIC CALMING PLAN OPEN HOUSE

Next Steps

Feedback from the Open House will be consolidated to inform updates to the Traffic Calming Plan

The final draft Traffic Calming Plan will be sent to homeowners this Spring with a request for support. If 2/3 of homeowners support the plan it will be considered approved.

If the McClure Drive Traffic Calming Plan is approved, the design will be finalized (detailed design) in 2023. Implementation/Construction will be subject to funding in future years.

